

# Wheeling the A

The official newsletter of the Wisconsin Chapter  
Model A Ford Club of America

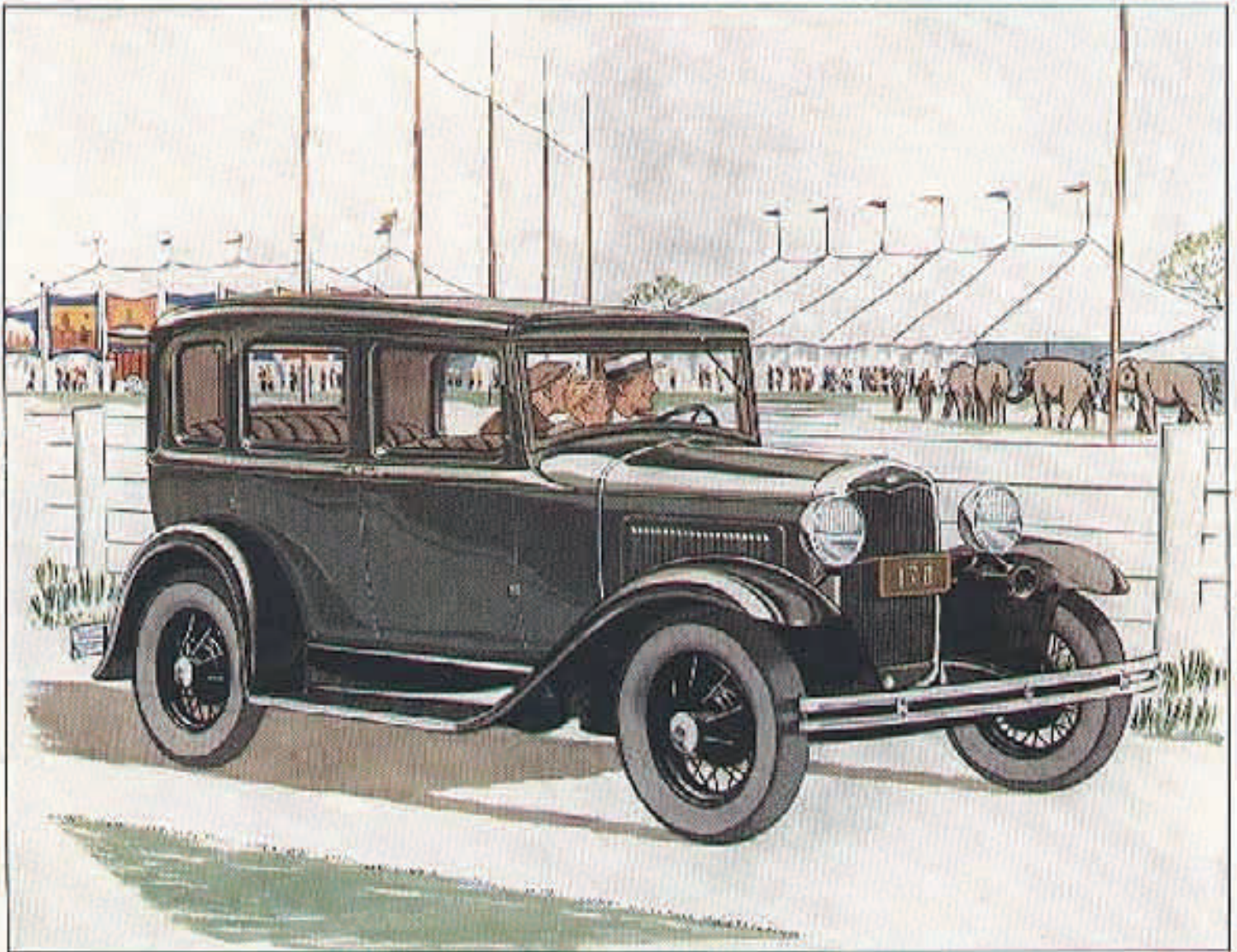
Volume LIV Issue 6

PO Box 26006 Wauwatosa, WI 53226-0006

June 2013




LIFE - JUNE 26, 1931



THE NEW FORD STANDARD SEDAN. Longer, wider, more luxurious. Low first cost. Economical terms through Authorized Ford Finance Plans of Universal Credit Company

FOR MORE INFORMATION LOG ON TO [WWW.MODEL-A-WIS.COM](http://WWW.MODEL-A-WIS.COM)

## Board of Directors 2013:

<p><b>President:</b> : Dave Boucher 262-662-2273 president@model-a-wis.com</p>	
<p><b>Vice President &amp; Sunshine</b> Steve Lewis 262-573-9821 vicepresident@model-a-wis.com</p>	
<p><b>Secretary:</b> Dave Huenink 262-378-4216 secretary@model-a-wis.com</p>	
<p><b>Treasurer:</b> Paul Piotrowski 262-513-1089 treasurer@model-a-wis.com</p>	
<p><b>Outdoor:</b> Mike Clinnin 414-294-0238 outdoor@model-a-wis.com</p>	
<p><b>Indoor:</b> Mike Yokofich 414-651-1243 indoor@model-a-wis.com</p>	
<p><b>Technical Meets &amp; Awards:</b> Neil Besougloff 262-408-1479 techmeet@model-a-wis.com</p>	

## Volunteers for 2013:

<p><b>Editor:</b> Sue Quam 414-491-3260 wheelingthea@yahoo.com</p>
<p><b>Webmaster:</b> Carl Doro 414-259-9692 webmaster@model-a-wis.com</p>
<p><b>Club Property:</b> Al Downs 414-762-3731</p>
<p><b>Tool Keeper:</b> Bill Storey 262-338-0452</p>
<p><b>Distribution:</b> Marilyn Brojanac 262-252-4340 marilyn@rodrian.com</p>
<p><b>Distribution:</b> Lorraine Schultz 262-251-3043</p>
<p><b>Club Photographer:</b> Jo Lene Janssen, Peter Stauber and Steve Cloyd</p>
<p><b>Video Librarian:</b> Ron Smith Home-262-628-3688</p>
<p><b>Club Historians:</b> Art &amp; Sue Blazek 262-538-4474 ablazek@wi.rr.com</p>
<p><b>Fashion Articles:</b> Diane Smith 262-628-3688 beadqueen09@gmail.com</p>
<p><b>Paid Advertising:</b> Steve &amp; Debbie Lewis 262-573-9821 steve-n-deb@charter.net</p>

Please send all Wisconsin Chapter  
Correspondence to:  
WI Chapter MAFCA  
PO Box 26006  
Wauwatosa, WI 53226-0006

Please remember deadline to submit  
articles and ads is the 15th of each  
month. Submit them to:  
wheelingthea@yahoo.com

## For more information log on to [www.model-a-wis.com](http://www.model-a-wis.com)

It is the intent of the Wisconsin Chapter to serve as a medium of exchange of ideas, information, and materials for admirers of the Model A Ford and Model A era fashions; to help those admirers become better acquainted; and to maintain among its members the spirit of good fellowship and sociality through sponsored activities including the use of the Model A and family participation.

## ADVANCED TIMING SCHEDULED EVENTS FOR 2013

- June 2** Model A Day, Sharon, WI - Hosts Bob & Sandi Davisson
- June 9** Tour - Hosts Jess Janke & Al Downs  
Racine Airport Tour
- June 12** Car show—The Lutheran Home - Hosts Dave & Donna Boucher
- June 16-21** MAFCA Central Midwest Regional Meet, Wichita KS. Hosted by Wichita A's
- July 4** Greendale Parade - Bill Dickinson
- July 4** Franklin Parade - Hosts Dave & Linda Huenink
- July 12-13** Millers at Milwaukee—Vintage Indy Car Event at State Fair Park
- July 21** Tour to Kenosha Civil War Museum - Hosts Bob & Sandi Davisson

- July 26-28** Rapids Reunion—2013
- July 27** South Milwaukee Heritage Day Parade  
**Host Needed**
- Aug. 9-10** Waukesha Rotary Bluesfest - Hosts: Marty & Jo Lene Janssen
- Aug. 11** Annual Club Picnic - Hosts Dave & Donna Boucher. "You **MUST** register if you want to eat!"
- Sept. 3-8** MAFCA Northwest Regional Meet Bend, OR, Hosted by High Desert A's
- Sept. 7** Luther Manor Car Show - Hosts Art & Sue Blazek
- Sept. 8** Tour - Hosts Dave & Linda Huenink
- Sept. 14** Mitchell Manor Car Show - Hosts Dave & Linda Huenink (rain date Sept. 21)
- Sept. 21** Richfield Thresheree - Host Pete Stauber
- Oct. 13** Fall Tour & Chili Dump - The Bouchers and The Schmiechens
- Nov. 9** Veterans Parade - Host Neil Besougloff
- Nov. 24** Waukesha Christmas Parade - Hosts Dave & Linda Huenink

### Free Car Wash With Oil Change



**Tires - Alignments - Brakes - State Emissions Testing  
Coolant and Transmission fluid change  
FREE SELF SERVICE VACUUMS**

**Wash: 262-250-9020                      Lube: 262-250-9021**  
**Main Street - Menomonee Falls    www.rfwashnlube.com**

### Templin's Old Time Auto, LLC

Model A Ford Parts New, Used, & Rebuild  
1022 Mulberry St./County A • Lake Mills, WI  
*We offer mechanical repairs - specializing in Model A's*

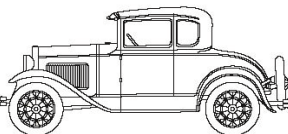
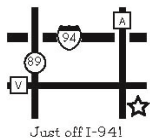
**Monday - Thursday**  
4:30 pm - 7:00 pm

**Saturday**  
9:00 am - 4:00 pm

**Friday - Closed**  
By Appointment Only

*Also Closed on  
Sundays, Holidays  
and Swap Meets*

**Orders can be faxed or e-mailed in at anytime**  
(920) 648-5282 - Phone • (920) 648-5920 - Fax  
jeff@oldtimeauto.net



**www.oldtimeauto.net • Jeff Templin, Owner**



**Badger**  
— SINCE 1969 —  
METAL FINISHING & COATINGS INC.



Specializing in:

## Custom Plating



Auto, Truck, Motorcycle and Marine parts  
Show Chrome • Black, Gold, Brass & Nickel Chrome  
All Colors Powder Coating & Anodizing • Clear Anodizing  
Repair and Refinish any Truck, Car or SUV Bumpers and Rims  
Stainless Steel, Aluminum, Diecast • Antiques • Marine

5 Day Service Per Request • M-F 9 - 5 • Saturday By Appointment Only

4021 S. Kinnickinnic Ave.    customercare@badgermetalfinishing.net    (414) 482-4820  
St. Francis, WI 53235                      www.badgermetalfinishing.net                      Fax (414) 482-4822

***It's Model A Day Again In Sharon, WI Sunday, June 2, 2013  
(This is it ....No rain date .....***

*This marks the 17th year of this annual event sponsored by the Sharon Main Street Association and the Rockford A's Model A Club (Rockford, IL) Official hours are 9 a.m. to 2 p.m.*

*Free main street parking for Model A's, Pig roast with all the trimmings, running board lunches, 1920s and 30s jazz band, old fashioned ice cream social, dancers and other entertainment, crafters and the ever popular Model A parts swap meet.*



\*\*\*\*\*

Join with other chapter members for a great outing down to little Sharon, Wisconsin (Pop. 1600) to "rub hub caps" with 250 or more Model A's from all over the Midwest. If you've never been there..... It's well worth the trip.

We'll stage for the approximately 50 mile "run to Sharon" at McDonalds, 3680 South Moorland Road at West National Avenue in New Berlin. WE WILL DEPART PROMPTLY AT 7:15 a.m. Main Street parking in Sharon fills up early. We should be arriving there by 9:00 a.m. Driving route instructions will be provided at the starting point.

Racine area and "out west" folks..... join with us about 7:45 a.m. at the McDonalds/Shell complex at Highway 20 and County ES on the northeast edge of East Troy. We can then continue on to Sharon as one group.

Don't own a Model A? Yours is "sick"? Modern cars are welcome to join with us. There's lots of parking just outside "downtown Sharon".

Plan now! Save the date! Your tour hosts; Bob and Sandi Davisson (414-543-2424)

**MIKE'S REPAIR SERVICE**  
Model A Ford and Early Mustang  
Parts and Service

**Mike Quam, Owner**  
**16130 Top-O-Hill Drive**  
**New Berlin, WI 53151**

Visa and Mastercard Accepted

414-491-3191                      sonic05gt@yahoo.com

**Mike's "A" Ford-able Parts**

**Mike Butcher** 

124 Model A Drive, Maysville, GA 30558  
email: [mike@mikes-afordable.com](mailto:mike@mikes-afordable.com) - [www.mikes-afordable.com](http://www.mikes-afordable.com)  
Fax: 706 652 2492 - Phone: 706 652 3866  
1 888 TRY MIKE (879 6453)



*Specialising in 1928 - 1931 Model A Ford Parts*



**Drive In / Fly In**  
**Racine John Batten Airport**  
**Racine Wisconsin**

*Free Breakfast for all pilots and drivers*  
**Saturday/Sunday June 8<sup>th</sup> & 9<sup>th</sup>**

**7AM – 3:00 PM**

**Saturday**

Free Airplane rides for kids 8-17      Free Museum tour      Free Flight Simulator  
 Free Airplane viewing      Free Car Show      Discovery Flights available

**Sunday**

Free Museum tour      Free Flight Simulator      Free Airplane viewing      Free Car Show      Discovery Flights available

**Free Admission    Free Parking    Everyone Welcome!    Bring some friends**

*Wisconsin Chapter MAFCA tour Sunday June 9th. Chapter will provide one additional breakfast per vehicle.*

*Hosted by Jess Janke*

*Meet at Mail Truck Model A at 8:00 am*

**Antique**

**Classic**

**Muscle**

**Hot Rod**



**3333 N Green Bay Rd. Racine WI 53404**

**Free Event**

**Phone: 414-758-0759**

**Sponsored by EAA 838**

We will leave the parking lot of Mail Truck Model A at 8:30 a.m. Sunday morning and enjoy the back roads of Oak Creek and northern Racine County arriving at the EAA Chapter 838 building with a hot breakfast waiting for us.

## Lutheran Home Car Show



June 12th, 2013  
9:30 a.m. to 11:30 a.m.

The Lutheran Home at 7500 W. North Ave. in Milwaukee has asked us to put on a car show. The show will be Wednesday, June 12<sup>th</sup> from 9:30 a.m. to 11:30 a.m. Lunch will be provided for all participants. We need 10 cars for the show. These shows are very rewarding as all the residents will tell you they had one just like yours. If you would like to put a smile on the faces of the residents give us a call. You need to RSVP by June 3<sup>rd</sup> as they need a count for lunch. Call Dave or Donna Boucher @262-662-2273.

## Franklin 4<sup>th</sup> of July Parade



With the warmer days we have had, summer is not too far off. So come and join Dave and Linda

Huenink with Morgan the wonder dog, dressed in his 4<sup>th</sup> of July finest, in the 2013 Franklin 4<sup>th</sup> of July Parade. We will line up between 10:00 a.m. and 10:15 a.m. with the parade starting at 11:00 a.m. Our assembly point will be on Highway 36 east of Highway 100 in Franklin. The parade lines up in the east bound lane. Each year proves to be a great time and lot of fun. If you have any questions please feel free to call Dave Huenink at 262-378-4216.

**Trip to Michigan to  
the MAFFI Model A  
Museum has been  
CANCELLED.**

**BRASSWORKS**  
MADE IN THE U.S.A.

Early Ford Radiator Reproductions  
Radiator Restorations  
Custom Built Radiators

28-29  
30-31  
32  
33-34  
35  
36  
37-39  
40-41

Radiator Cores  
Flat Tube  
Round tube  
Honeycomb  
Cartridge

Heater Cores  
Fan Shrouds

Paso Robles, CA

www.thebrassworks.net 805.239.2501

**Milwaukee's  
Dry Stripping  
Headquarters**

**262.781.8884**  
4907 North 124th Street  
Butler, WI 53007

### Specializing in:

- Industrial Blasting and Painting
- Automotive Paint Stripping
- Metal Furniture Stripping and Refinishing
- Do It Yourself Sandblasting Cabinets

**U-SPRAY**  
INCORPORATED

MIKE BROJANAC (414) 464-7814  
All Work Guaranteed

## THE BRAKE SHOP

7665 W. APPLETON AVE  
MILWAUKEE, WI 53222  
Complete Auto Repairing



# Here's a great idea for you...

It's almost time to get serious about our Lizzie's. Last year our club had quite a presence in the Fourth of July parade in Greendale. There were 10 vehicles of all configurations. Every thing from start to finish was in the column from a true "before restoration" to some excellent examples of Model A preservation.

One of the features of the parade last year was evidence of the clubs broad interest as well as Fords wide product line.

I think, perhaps the hit of the column was Gary Schwabe's beautifully restored, flawless gray and red 1940 series Ford tractor. The crowd was wowed by it and the variety of other Ford products. That was one of

my top priorities for the event; to display our

club's variety of inventory. Most

people have no idea of the variety of

Ford products. I would like to continue this format and show some of Ford's lesser known models.



**Plaques  
and  
Goodie Bags  
to the  
FIRST 20**

This year there will be an added appeal to the yearly event. It is Greendale's 75th birthday. To commemorate the day and celebrate our clubs participation, I plan to present all Model A paraders with the car plaque pictured to the right.

As you can see this years plaque features the 75th celebration logo, and images of two of our members cars.

Please consider joining me at the Greendale 75th birthday, 4th of July parade and let's show them what Model A cars and trucks are all about. I will need to order the plaques and get the "goodie bags" so contact me for arrangements...414-744-0937. Bill Dickinson

## Have you ever been to Masu-kinoja?

Well, hop in your Model A and come along with us to Masu-kinoja, known by the Ojibwa Indians as "The place of spawning trout".

As a small settlement at Pike Creek on the western shore of Lake Michigan in 1836, it was known as Pike. Later on, the village was renamed Southport which was descriptive of it being an important Great Lakes shipping port influenced by Milwaukee to the north.

Where are we going? To Kenosha, Wisconsin of course.

What is the occasion? It's the July Tour, Sunday, July 21, 2013.

Where are we going in

Kenosha? To the recently opened Civil War Museum in the lakefront "cultural center".

Watch for the details in next month's "Wheeling The A".

Bob and Sandi Davisson, Tour Hosts.





# PICNIC



Annual Picnic  
Sunday August 11<sup>th</sup> 2013  
Malone Park  
3953 S. Casper Dr.  
New Berlin, WI  
Lunch at Noon

This year's picnic is going to be catered so **you must register.** The picnic is free to all current members and their spouse/guest and dependent children.

All non-members will be charged a guest fee of \$14.00 per adult and \$7.00 per child 12 years and under. All guest fees must be paid in advance.

Everyone attending the picnic must register for accurate numbers for the caterer. The caterer will not provide beer so, if you wish BYO. We will have soda, water, lemonade, etc.

Remember you and your guests must be registered **by August 1<sup>st</sup>, 2013** to attend.

Registration by August 1<sup>st</sup>, 2013

Name \_\_\_\_\_

Number of Members Adult \_\_\_\_\_ Children \_\_\_\_\_

Guests Adult \$14.00ea. \_\_\_\_\_ Children \$7.00ea. \_\_\_\_\_

Make Checks Payable to Wisconsin Chapter MAFCA

Mail to: Dave & Donna Boucher  
S77 W22620 Sunset Glen Dr.  
Big Bend, WI 53103  
Questions call: 262-662-2273

\*Remember members and any guests must be registered to attend.



# “A” ..line from the Prez



June looks to be a busy month for our chapter. First we have a day in Sharon, WI, then we have what sounds like a very interesting day at the Racine Airport. Then onto the car show for the residents at the Lutheran Home in Milwaukee. If that's not enough there's also the MAFCA Central Midwest Regional Meet at Wichita, Kansas. There is always something of interest going on each month in our chapter.

This year's picnic is going to be catered, which creates a few changes. **First and most important, you must register.** All members/spouse and their dependent children are free to attend. There will be a guest fee for your guests which is \$14.00 per adult and \$7.00 per child 12 and under, these fees must be paid in advance. To register call or mail registration form to the Boucher's at 262-662-2273. See the article in this month's newsletter (page 8).


Don't forget to register for the 4<sup>th</sup> of July Parades in Franklin and Greendale. Call Dave Huenink for Franklin and Bill Dickinson for Greendale.

The audit committee of the Schmekins, Dickinsons, Bouchers and Piotrowskis meet on May 14<sup>th</sup>, 2013. Once again this year the books were found to be in order. Thanks to Paul Piotrowski for his excellent bookkeeping skills.

That's about it for now. Here's hoping to see you at one of our clubs next events.

Dave Boucher  
President

OPEN  
Monday-Saturday  
10:30 am



Closed  
Sunday's

3146 S. 27th St

**HDR Inc. - Heavy Duty Radiator Repair**

N56 W13332 W. Silver Spring Road  
Menomonee Falls, WI 53051

**262-252-3920 FAX 262-252-3934**

**Bill Kowalefski**

*We Take Care of Leakers!*  
*Specializing in Any and All Kinds of Radiator Repair*



## Sunshine Report:



Our deepest sympathy goes out to the Lemminger and Piotrowski families.

We were sorry to hear that long-time member, Bob Lemminger, passed away April 27th. Condolences were sent to his wife, Rita. A memorial in Bob's name was sent to the Falls Area Food Pantry.

We also learned of the passing of Paul Piotrowski's mother, Diana, on April 28th.

Jo Lene Janssen had surgery on her knee and is doing well at home.

Wally Kaufman spent some time in the hospital this past month.

Know that many thoughts and prayers are sent your way. We hope all are doing well and will be able to participate in "A" few of our activities.

**If you have sunshine to report, please contact Steve Lewis 262-573-9821 or by emailing: [vicepresident@model-a-wis.com](mailto:vicepresident@model-a-wis.com)**

### Mail Truck Model A

Providing all of your Model A needs



8509 S. Howell Ave  
Oak Creek, Wi 53154  
414-762-7288

Owner—Tony Baudo

We now offer shipping and Model A Service

*Livin' the "A" Life...*

Marty Janssen, CPA



Collector of Practically Anything

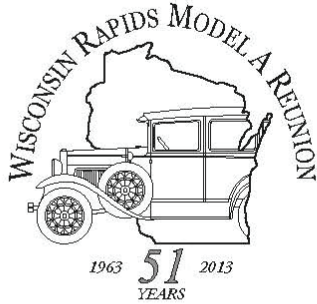


**JANNSEN + COMPANY**

CPA & Accounting Services    Human Resources  
Information Technology        Payroll Specialists  
Wealth Management

262.513.9292 • 262.513.9282 fax

[Marty.Janssen@janssen.com](mailto:Marty.Janssen@janssen.com)  
[www.janssen.com](http://www.janssen.com)



*51st Annual Wisconsin Rapids Model A Reunion*  
July 26th-28th 2013

As of this writing, the Annual Wisconsin Rapids Model A Reunion is 3 months away. Believe it or not, only 4 families have pre-registered for this event. This is 4 families total, from all the clubs.

Why not send in your pre-registration today, save \$5 on your registration fee, to give a more accurate head count to those that order the supplies for the weekend? If a registration form is not in your club's newsletter, you can get one off the web at <http://clubs.hemmings.com/wirapidsmodela>. New this year, you can fill your information into the form on line, and then print it out to mail in. Pre-registration deadline is July 1st.

One thing to remind everyone is that there is an Open Jam session held on Friday from 1:30 to 4:00. Over the years, Dick Ziegert, of the Nickle A Region, has been the only person participating in this event. If you have a musical instrument, and would like to participate in this event, please bring it along.

While on the subject of music, don't forget about the dance on Saturday night. One complaint every year is that the DJ doesn't have the songs that they want. If you have a list of songs, e-mail them into the Reunion web site at [wirapidsmodela@frontier.com](mailto:wirapidsmodela@frontier.com). We will be sending this list to the DJ prior to the Reunion. Send in before July 6th.

There will be two tours again this year. The short tour will go around the Grand Rapids area, and will be back in time for the Hubley Derby and Kids' Games. The long tour this year is going to Iola to go through an old grinding mill, along with other scheduled, and unscheduled, stops.

Hope to see everyone at the Model A Reunion.

Paul Thomas Sillman  
2013 Wisconsin Rapids Model A Reunion Chairman  
Wisconsin Region MARC

**Things that make you say "hummm???"**

If people evolved from apes, why are there still apes?

Why is it that no matter what color bubble bath you use the bubbles are always white?

Why does Superman stop bullets with his chest, but ducks when you throw a revolver at him?

Why do Kamikaze pilots wear helmets?



# Era Fashions by Diane Smith

McCall's Magazine June 1928

## Decorative Necklines Join up with flowing Skirts

Enthusiasts in fashions are dividing their praise between novelty movements in skirts and the insistent ornamentation of the neckline which, for so long, has refused to give way to any effect of softening. Now the collars, capes and cravats triumph. No doubt that it's an improvement! Men say that women's clothes are again "cluttered up." But the fashion for out-swinging material is a present part of the frock's equipment.



No. 5287. This figured silk cleverly employs bias lines to give novelty to pleats and introduces vest and cuffs that attract attention.

Picture on the right, in this frock of georgette, collar and skirt take cognizance of each other. One becomes a cape. The other becomes a series of flounces.

No. 5301. The cape on this printed georgette gown balances the pointed godets that serve to lengthen the skirt. And even the girdle has flying ends.

No. 5280. Even sports clothes relax from severity as in this heavy silk frock with contrasting vest and skirt band.

# McCall's Magazine June 1928



#5294. This blouse is all feminine with Vionnet vest and wide sleeves.

#5086. Here's again the shirtwaist that tucks under the skirt. The cravat and handkerchief prove its masculinity.

#5169. Silk pique has become a fashion of importance. It's in this blouse to be worn with a coat suit.

#5197. We follow the colored bindings in this cotton frock.

#5296. This skirt hung from a camisole top throws the burden on shoulders.

#5155. Once we wore these coquettish frocks. We have decided to do it again.

# Invitation To Join Model A Ford Club of America

## New Membership

Name \_\_\_\_\_  
Spouse's Name \_\_\_\_\_  
Address \_\_\_\_\_  
City \_\_\_\_\_  
State \_\_\_\_\_ Zip \_\_\_\_\_  
Country \_\_\_\_\_ Telephone \_\_\_\_\_  
Permission to publish my telephone number in future Membership Rosters? Yes: \_\_\_\_ No: \_\_\_\_

## Gift Membership

Name \_\_\_\_\_  
Spouse's Name \_\_\_\_\_  
Address \_\_\_\_\_  
City \_\_\_\_\_  
State \_\_\_\_\_ Zip \_\_\_\_\_  
Country \_\_\_\_\_ Telephone \_\_\_\_\_  
Permission to publish my telephone number in future Membership Rosters? Yes: \_\_\_\_ No: \_\_\_\_

Return this form and payment to:

MAFCA

250 South Cypress Street • La Habra, CA 90631-5515

Source: MAFCA Web Site  
2009 Membership Form

## ~ Membership Benefits ~

*The Restorer* magazine • Technical Support • Local Chapters • National Meets • Era Fashion Guidelines • "How To Restore" Series • Judging Standards and Restoration Guidelines

Dues per year are  
U.S. Membership - \$40  
International Membership - \$50  
International First Class - \$56  
Make checks or money orders payable to  
MAFCA  
U.S. Funds Only

## For Credit Card Orders ~ Visa / MasterCard (circle one)

Card Number:

Exp. Date: \_\_\_\_\_

Signature: \_\_\_\_\_

\_\_\_\_ Membership Only \_\_\_\_ Membership + Initiation Package

## Optional Initiation Package For New Members Only

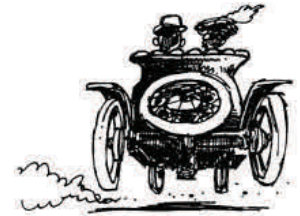
- 1 - Back issue of *The Restorer*
- 1 - MAFCA Lapel Pin
- 1 - MAFCA Decal
- 1 - Name Badge
- Only \$10 extra



After an intense high speed chase, an officer finally gets the lawbreaker to pull over.

"You know," says the cop, "I was originally pulling you over to tell you your taillight is out. Why the hell did you take off like that?"

"Last week my wife ran off with a cop," the man said, "and I was afraid you were trying to give her back."



In the backwoods of Arkansas, Mr. Stewart's wife went into labor in the middle of the night. The doctor was called in to assist in the delivery.

To keep the nervous father-to-be busy, the doctor handed him a lantern and said, "Here, you hold this high so I can see what I'm doing." Soon, a baby boy was brought into the world.

"Don't be in a rush to put the lantern down. I think there's yet another wee one to come." Sure enough, within minutes he had delivered another baby.

"Now don't be in a great hurry to be putting down that lantern, young man. It seems there's yet another!" cried the doctor.

The new father scratched his head in bewilderment and asked the doctor. "Do ya think it's the light that's attractin' them?"



## **CLASSIFIED ADS:**

**Classified ads, such as the ones seen here are free. To place your ad please contact the editor, Sue Quam at 414-491-3260 or by emailing your ad to: [wheelingthea@yahoo.com](mailto:wheelingthea@yahoo.com)  
Ads run for one month unless notified to run them again. Ads are due by the 15th of the month.**

**FOR SALE:** Model A parts, 2 good transmissions, 2 flywheel housings, brake drums, hubs, clutch parts (some multi disc) all \$.25 per pound. '30-'31 windshield frame \$20.00, '30-'31 cowl band, some small dents but excellent condition \$25.00, 1 pr. hood tops for '28-'29 Fordor with bead \$10.00/pr., 1 late '31 side bowl carb. \$100.00, Fulton hand starter linkage (new) for "28-early '31. Call Walt 262-628-3003

**FOR TRADE:** 2 very nice single bulb headlite reflectors for 1 two lite reflector in reasonable shape. Call Walt 262-628-3003

**FOR SALE:** 1930 Model A Duluxe six wheel, rumble seat Roadster. Manila brown #2000 paint with black fenders, wheels and trim. 382 actual miles since complete ground up restoration. Car is not perfect, but is very nice and an excellent driver. Used very little, we would like to find a local buyer who will appreciate, use and drive this car. Extras to the restoration include; LeBaron & Bonney upholstery and top, whitewall tires, dual side mounts with chrome tire bands and side mount mirrors, chrome luggage rack with trunk, thermoquail radiator cap, radiator stone guard, cowl lamps, running board step plates, Ford script bumper clamps, manual engine crank and windshield wiper motor (not installed). The price is reasonable \$17,500 but is not negotiable. Please call Jane or Jim at 414-421-1357



**FOR SALE:** 1966 Ford Galaxie 500 Convertible \$11,000. Call Gene 262-255-6134

**FOR SALE:** Model A headlights. \$200. OBO Call Gene 262-255-6134

### **NEED HELP WITH YOUR "A"? QUESTIONS THAT YOU NEED ANSWERS TO??**

Call our technical advisers :  
Roger Olsen 262-554-7058  
Mike Brojanac 262-252-4340

### **OUTDOOR MEET ADVISORY TEAM**

For help in running an event call:  
Jim Kummer 262-895-2897  
Stan Larson 262-251-1655  
Dave Boucher 262-662-2273

**Wheeling the "A"**

Wisconsin Chapter MAFCA  
Marilyn Brojanac, Distribution  
N61 W15975 Beechwood Dr.  
Menomonee Falls. WI 53051

**Address Service Requested**



**New Membership Application**

**Name** \_\_\_\_\_ **Date** \_\_\_\_\_

**Address** \_\_\_\_\_

**City** \_\_\_\_\_ **State** \_\_\_\_\_ **Zip** \_\_\_\_\_

**Phone**(\_\_\_\_) \_\_\_\_\_ **E-Mail** \_\_\_\_\_

**Child or Children's names** \_\_\_\_\_

**Model A's** \_\_\_\_\_

Send my newsletter via email \_\_\_\_\_ or US MAIL \_\_\_\_\_

*Dues for 2013 for the Wisconsin Chapter, MAFCA:  
Receiving the newsletter & roster via the internet is \$20.00  
To receive the newsletter and the roster via the US Mail (first class)  
the dues are \$30.00 New member applications are approved at the  
monthly Board of Directors meeting, which is the second  
Saturday of the month. You will receive a welcome letter upon  
approval. Dues include membership only in the  
Wis. Chapter MAFCA until the end of the current calendar year.*

**Send To:**  
Steve Lewis  
Vice President/New Member Chairperson  
Wisconsin Chapter, MAFCA  
PO Box 26006  
Wauwatosa, WI 53226-0006

**\*\* JUNE 2013 \*\***