

WHEELING THE A

The official newsletter of the Wisconsin Chapter
Model A Ford Club of America

Volume LIII Issue 8

AUGUST 2012









MAFCA National Meet see story on page 16



FOR MORE INFORMATION LOG ON TO WWW.MODEL-A-WIS.COM

Board of Directors 2012:

<p>President: : Dave Boucher 262-662-2273 president@model-a-wis.com</p>	
<p>Vice President: Mike Clinnin 414-294-0238 vicepresident@model-a-wis.com</p>	
<p>Secretary: Dave Huenink 262-378-4216 secretary@model-a-wis.com</p>	
<p>Treasurer: Paul Piotrowski 262-513-1089 treasurer@model-a-wis.com</p>	
<p>Outdoor: Gene Taurman 262-242-0137 outdoor@model-a-wis.com</p>	
<p>Indoor: Mike Yokofich 414-651-1243 indoor@model-a-wis.com</p>	
<p>Technical: Neil Besougloff 262-408-1479 techmeet@model-a-wis.com</p>	
<p>Sunshine: Steve Lewis 262-573-9821 awards@model-a-wis.com</p>	

Volunteers for 2012:

<p>Editor: Sue Quam Home-262-785-9021 wheelingthea@yahoo.com</p>
<p>Webmaster: Carl Doro 414-259-9692 webmaster@model-a-wis.com</p>
<p>Club Property: Rich Miller 262-782-2240 property@model-a-wis.com</p>
<p>Tool Keeper: Bill Storey 262-338-0452</p>
<p>Distribution: Marilyn Brojanac 262-252-4340 marilyn@rodrian.com</p>
<p>Distribution: Lorraine Schultz 262-251-3043</p>
<p>Club Photographer: Barb Sonnen, Jo Lene Janssen and Peter Stauber</p>
<p>Video Librarian: Ron Smith Home-262-628-3688</p>
<p>Club Historians: Art & Sue Blazek 262-538-4474 ablazek@wi.rr.com</p>

Please send all Wisconsin Chapter
Correspondence to:
WI Chapter MAFCA
PO Box 26006
Wauwatosa, WI 53226-0006

For more information log on to www.model-a-wis.com

It is the intent of the Wisconsin Chapter to serve as a medium of exchange of ideas, information, and materials for admirers of the Model A Ford and Model A era fashions; to help those admirers become better acquainted; and to maintain among its members the spirit of good fellowship and sociality through sponsored activities including the use of the Model A and family participation.

ADVANCED TIMING SCHEDULED EVENTS FOR 2012 & 13

Aug. 12 Annual Picnic - Malone Park, New Berlin
11:00 a.m. - 4:00 p.m.

Aug. 25 Reach for the Stars Tour - Hosts Dave & Linda Huenink

Sept. 9 Luther Manor Car Show -
Rain date 9/16

Sept. 15 Mitchell Manor Car Show - Dave & Linda Huenink rain date 9/22

Sept. 15 Richfield Threshereer - Ron & Diane Smith

Sept. 23 Tour - Bob & Sandi Davisson

Oct. 14 Fall Tour - Marty & JoLene Janssen

Nov. 10 Veterans Day Parade - Neil Besougloff

Nov. 11 Indoor Meet- Hosts Pete Stauber & Mary Ciocarelli

Nov. 15 Technical Seminar

Nov. 18 Waukesha Christmas Parade - Dave & Linda Huenink

Dec. 9 Christmas Party - **HOSTS NEEDED**

****2013**** HAPPY NEW YEAR

Jan. 13, 2013 Custard Social & BOD Election - Hosts Cheryl Prochnow & Mark Ackermann

Jan. 17 Technical Seminar

Jan. 26 or Feb. 2 Banquet- **HOSTS NEEDED**

Feb. 10 Trivia Contest - Hosts Mike & Sue Quam

Feb. 21 Technical Seminar

March 10 Dog Agility- Hosts Dave & Linda Huenink

March 21 Technical Seminar

Please remember deadline to submit articles and ads is the 15th of each month. Submit them to:
wheelingthea@yahoo.com

Milwaukee's Dry Stripping Headquarters

262.781.8884
4907 North 124th Street
Butler, WI 53007

Specializing in:

- Industrial Blasting and Painting
- Automotive Paint Stripping
- Metal Furniture Stripping and Refinishing
- Do It Yourself Sandblasting Cabinets

U-SPRAY
INCORPORATED

Livin' the "A" Life...

Marty Janssen, CPA



Collector of Practically Anything



JANSSEN + COMPANY

CPA & Accounting Services

Information Technology

Wealth Management

Human Resources

Payroll Specialists

262.513.9292 • 262.513.9282 *fax*

Marty.Janssen@janssen.com

www.janssen.com

YOUR INVITED TO BLUESFEST

The Waukesha Rotary Club

Friday, August 10, and Saturday, August 11, 2012



You're invited to attend either day or both days. Two tickets will be provided free for each day you attend with your Model A. We would like you to arrive between 12:30 p.m. and 1:30 p.m. Please stay until 6:30 p.m.

but you are welcome to stay until closing at

10:30 p.m. The event is held at Naga-waukee Park in Delafield located on Highway 83 about one mile North of I-94

We had eleven Model A's at the event last year on Friday. The attendees at the event had very positive comments about the A's. The event committee has requested that it would be nice to have the A's there both days.

Field of Honor: A Salute to the Greatest Generation

At Miller Park, Home of the Brewers

August 11th 2012

This once in a generation event will bring together thousands of World War II veterans and veterans from other conflicts, their families, friends and communities. The event will feature the world premiere of the Stars and Stripes Honor Flight Documentary on the Miller Park high definition video board and special viewing of the official model of the World War II Memorial on loan before going to the Smithsonian.

The schedule of events is:

3:30 p.m. Parking Lot Opens: World War II re-enactors & Live Music

4:30 p.m. Stadium Opens: Pillars of Honor World War II Memorial Model and SSHF Art Show

6:30 p.m. Program Begins: World Premiere of the Honor Flight Documentary Movie

9:00 p.m. Flyover and Fireworks

Here's where we come in. I

need about five Model A's for display and if you own a different car from the 30's or 40's, I

need them also. I am looking to display about twenty-five cars total. So call and reserve a spot with me. If you know someone that is not a club member but has a 30's or 40's car, have them call me. I need all makes, Ford, Chevy, Buick, Olds, Mercury, etc.

The car display will be from 3:00 p.m. to about 6:00 p.m. If you want to attend the program you will need to order tickets. The cost is \$11.00 per ticket. Tickets can be ordered on line at Field of Honor/Brewers.com.

Even if you don't have a car to display, you may want to attend this worthwhile event.

For more info go to www.honorflightstories.com
Call Dave Boucher at 262-662-2273 to register your car. Space is limited.



Templin's Old Time Auto, LLC

Model A Ford Parts New, Used, & Rebuild
1022 Mulberry St./County A • Lake Mills, WI

We offer mechanical repairs - specializing in Model A's

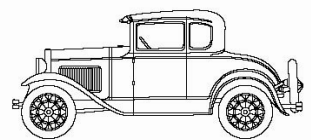
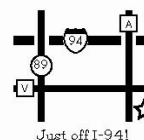
Monday - Thursday
4:30 pm - 7:00 pm

Saturday
9:00 am - 4:00 pm

Friday - Closed
By Appointment Only

Also Closed on
Sundays, Holidays
and Swap Meets

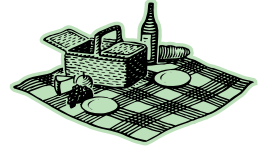
Orders can be faxed or e-mailed in at anytime
(920) 648-5282 - Phone • (920) 648-5920 - Fax
jeff@oldtimeauto.net



www.oldtimeauto.net • Jeff Templin, Owner



2012 Annual Model A Picnic



Sunday, August 12, 11:00 a.m.- 4:00 p.m.

Malone Park 3953 S. Casper Dr.

New Berlin, WI

COSTS: Members and kids under 12 are free

Adult guests are \$5.00 per person

Bring a salad or dessert to share

Call or email Gene & Betsy Taurman 262-242-0137,

bhet@sbcglobal.net to make your reservations.

We need a head count of adults and children to assure enough food and drink.

We need extra help during the picnic to cook, run games, and clean up.



Come one, come all and join Dave and Linda Huenink on the
“Reaching for the Stars” Tour August 25th, 2012

We will meet at the McDonalds on Hwy 164 and National Avenue (Hwy ES) in Big Bend at 12:30 p.m. and plan on departing at 12:45 p.m. We will tour the Waukesha County country side and stop at the planetarium at the Retzner Nature Center for a 1 hour presentation which they will be doing just for our group. After the presentation we will spend some time exploring the Retzner Nature Center. The center has a lot to offer and the scenery is fantastic. From there we will hit the road for a little more touring before we stop for a bite to eat for those who want to stop.

YOU DO NEED TO RSVP, so we have a count for the planetarium and the restaurant. Morgan the wonder dog will not be making the tour as he has a prior engagement. If you have any questions or want to RSVP please call Dave Huenink at 262-378-4216.

OPEN
Monday-Saturday
10:30 am



Closed
Sunday's

3146 S. 27th St



— SINCE 1969 —
Badger
METAL FINISHING & COATINGS INC.



Specializing in:

Custom Plating



Auto, Truck, Motorcycle and Marine parts
Show Chrome • Black, Gold, Brass & Nickel Chrome
All Colors Powder Coating & Anodizing • Clear Anodizing
Repair and Refinish any Truck, Car or SUV Bumpers and Rims
Stainless Steel, Aluminum, Diecast • Antiques • Marine

5 Day Service Per Request • M-F 9 - 5 • Saturday By Appointment Only

4021 S. Kinnickinnic Ave. customercare@badgermetalfinishing.net (414) 482-4820
St. Francis, WI 53235 www.badgermetalfinishing.net Fax (414) 482-4822



September 15th, 2012
Richfield Historical Park
14th Annual Thresheree



Meet at 8:45 a.m. at Friess Lake School on the corner of Hwy 167 and Hwy 164.

We will promptly leave the school at 9:00 a.m.

Ron and Diane Smith (262-628-3688)

AND NOW.... FOR SOMETHING A LITTLE DIFFERENT

The September tour is “just around the corner”. Plan on joining with us on Sunday, September 23rd for a visit to Milwaukee's only working distillery..... That's right..... Everyone always thinks of Miller or the various microbreweries and beer. So checking out how “the hard stuff” is made will be a “change of pace” for you.

The Great Lakes Distillery located at 616 West Virginia Street in the historic Walker's Point neighborhood will welcome us with a one hour plus tour and product sampling session. Great Lakes produces handcrafted batches of premium gin, rum, whiskey and vodka. The tour is free for everyone. However, there is a \$5.00 “tasting fee” per person which includes five product samples. We will also have time to visit the gift shop and product store.



We will meet at McDonald's located at 3131 North Mayfair Road (108th Street/Highway 100; cross street West Burleigh) and start the tour promptly at 1:00 p.m.

Following the distillery tour, we will continue on to Calanan's Parkway Pub, 11505 West National Avenue in West Allis, 414-543-2255, for some liquid refreshments and snacks provided by the chapter. Calanan's is located at the point where West National Ave. and West Oklahoma Ave. meet.

And, in case you're wondering..... The Packers play at Seattle the next night, Monday 24 September.

Bob and Sandi Davisson
Tour Hosts

“A” ...line from the Prez



I hope everyone is surviving our unusually hot summer. I have noticed that the in color for the lawns is brown. I tried to keep our grass green by watering but had to give up before our well did. As I am writing this the temperature seems to be getting back to normal.

This month we have our annual picnic. It sounds like Gene and Betsy Taurman and their volunteers have a good one planned. This is one of our biggest events of the year as far as attendance. Don't miss it!! There is always plenty of food, fun and good Model "A" fellowship. This is a great event for first timers to get out and meet other members.

We still have some great events coming up in September and October, so mark your calendars and come out. Participation is what our club is all about. I've heard people say I don't get anything out of the club, that might be because they don't put anything into the club. Join in and come out to our events or better yet get involved and help to run an event. I've heard people say the club has cliques. What is a clique? To me a clique is a group of members who through involvement in club activities have become friends. These aren't cliques they're friendships. The best way to meet other club members and form friendships is to get involved. Don't sit on your hands and wait for people to come to you. Since joining the club in 1972 I have made a lot of friends and am still making new friends today. The way is to be involved. If you have any questions about how to get involved call me. I'm looking forward to new friendships in the future.

That's it for now. Hope to see you at our next event.

Thanks,
Dave Boucher
President

BRASS WORKS
MADE IN THE U.S.A.
Early Ford Radiator Reproductions
Radiator Restorations
Custom Built Radiators

28-29
30-31
32
33-34
35
36
37-39
40-41

Radiator Cores
Flat Tube
Round tube
Honeycomb
Cartridge

Heater Cores
Fan Shrouds

Paso Robles, CA

www.thebrassworks.net 805.239.2501

MIKE BROJANAC (414) 464-7814
All Work Guaranteed

THE BRAKE SHOP
7665 W. APPLETON AVE
MILWAUKEE, WI 53222
Complete Auto Repairing

HDR Inc. - Heavy Duty Radiator Repair

N56 W13332 W. Silver Spring Road
Menomonee Falls, WI 53051

262-252-3920 FAX 262-252-3934

Bill Kowalefski

We Take Care of Leakers!
Specializing in Any and All Kinds
of Radiator Repair



Thanks for Your Years of Service

A big thank you to Ed and Lorraine Schultz for their many years of service to our club. Ed and Lorraine have been in charge of paid advertising for many years. They have done a great job over the years. Again a big thank you from all our club members. I am looking forward to working with Steve and Debbie

Lewis as they take over for Ed and Lorraine. —Dave Boucher

Wheeling the A's late email arrival last month.

Some things can just never be explained and that was last month's emailing of the Wheeling. I had emailed the newsletter on Monday, June 25th and found out on Friday that people never got the email. So on Friday, June 29th I emailed the paper out to everyone again. After checking with a few members I realized no one got that email either. I had used the usual msquam@wi.rr.com email address to email it out. I'm guessing those emails of the Wheeling landed in the black hole of cyber space. On Saturday, June 30th I set up every ones email address into the new wheelingthea@yahoo.com account. From there I emailed every one their newsletter again, I did have a few emails that bounced back, those were :jnavin@spee.dee.com, gerald.fischer@mu.edu, lee.hollingsworth@airgas.com, termikl@comcast.net I don't know if they came back because you do not have this new email address in your contacts list or if there is an error on my end. Please put wheelingthea@yahoo.com in your contacts so the newsletter will always reach you in your inbox. Never figured out what happened, but hoping I don't have a repeat of it again this month!

Happy Wheeling!

Sue Quam, Editor

Wisconsin Chapter Member

Al Downs



Mail Truck Model A

Providing all of your Model A needs

8509 S. Howell Ave

Oak Creek, Wi 53154

414-762-7288

We now offer shipping and Model A Service

MIKE'S REPAIR SERVICE

Model A Ford and Early Mustang
Parts and Service

Mike Quam, Owner

16130 Top-O-Hill Drive

New Berlin, WI 53151

Visa and Mastercard Accepted

(414) 491-3191 • (262) 785-9021

We've Revolutionized the
way you find Model A Parts!

YOUR MOST
RELIABLE SUPPLIER
OF QUALITY PARTS
FOR OVER 20
YEARS!



FOUR CATALOGS TO CHOOSE FROM:

• Coupe • Pickup • Open Car • Sedan

CALL & ORDER YOUR
FREE CATALOG TODAY

1-888-879-6453

www.mikes-afordable.com



Model A Ford Club of America – Wisconsin Chapter
Board of Directors Meeting – July 21, 2012



In attendance: Dave Boucher, Mike Clinnin, Dave Huenink, Paul Piotrowski, Gene Taurman, Neil Besougloff, Steve Lewis. Not in Attendance: Mike Yokofich

The meeting was called to order at 7:02 p.m.

President – Dave B. We received the newsletters from the reciprocating clubs. Dave contacted Rob at Times Apparel requesting a list of items for sale so they can be posted in Wheeling The A.

Vice President – Mike C. We received two applications for new membership. One application from Jerry and Leona Dempsey who own a 1929 Tudor sedan and the other from Lee Paulus who owns a 1929 Tudor Sedan. A motion was made by Paul and seconded by Neil to accept new members, motion carried. Paul mentioned he has received and paid the May and July printing costs for Wheeling but has not received the June bill.

Secretary – Dave H. Motion made by Gene and seconded by Neil to accept previous meeting minutes as presented, the motion carried. We received a membership renewal along with the two new members, this brings our membership to 273 members. A discussion on the publishing of the renewal application in the Wheeling because so many members renewed well after the deadline for the 2012 dues. The application will start to appear in the Wheeling in October.

Treasurer – Paul P. June's financial statement was gone over. Dave H. made a motion to accept the treasurer's report and it was seconded by Neil, motion carried. Steve turned in a bill for miscellaneous Sunshine and Award expenses. Income from dues turned in. Neil made a motion to accept the bills and income and it was seconded by Dave H. the motion carried. There are several outstanding checks which have not been cashed. Paul called the members who have those checks and asked them to please cash them.

Outdoor – Gene T. The outdoor events are going well and are well attended. The first picnic planning meeting is the week July 23rd. So far forty-two people and one child have signed up.

Indoor – Mike Y – No report.

Technical – Neil B. – The dates for the technical seminars are Nov. 15th, Jan. 17th, Feb. 21st, and Mar. 21st. The topics have not been decided thus far. The safety inspections that have been done to date of those cars inspected have only found minor items to be fixed.

Sunshine and Awards – Steve L. – Barb Sonnen had knee surgery and Wally Kaufman was scheduled to go back into the hospital July 17th.

Old Business– All job descriptions are now complete. Plans for the Veterans Honor Flight program on August 11th are proceeding on schedule.

New Business– A discussion was held regarding the new advertisements for Wheeling and how to get the graphics. Those vendors putting ads in Wheeling will supply their own graphics. At the national meeting eighteen members from our club attended. A discussion was held regarding the Board of Directors for 2013. **WE NEED MORE PEOPLE TO RUN!!** There are three positions which will be open and there is only one person running. Should no one run, the size of our board will be reduced as it was for 2012. We discussed the names of several potential candidates. We discussed the form used by those turning in expenses and reporting on the events they host during the year. A change is going to be made as to who gets the completed form once the event is over. A discussion was also held regarding how to keep the web site up-to-date. We will be talking to our web master about this. Discussed putting our club on Facebook, decided not to do it as no one wants to monitor it.

A motion was made by Neil and seconded by Gene to adjourn the meeting. The meeting was adjourned at 8:10 p.m.

Respectfully submitted by,

Dave Huenink
MAFCA Wisconsin Chapter Secretary

MAFFI UPDATE

The construction of the museum is moving along rapidly toward a completion date in early September. Individuals and local clubs have ordered over seven hundred inscribed bricks for the walkways. If you plan to have your brick installed by the Grand Opening on May 18, 2013 you should order it soon.

Several MAFFI Trustees attended both the MARC and MAFCA summer meets and provided information about the museum status, and the plans

for the interior of the museum. Now is the time for individual Model A owners to consider a donation or loan of items for the museum. All donated items are tax deductible and will be labeled with the donor's name. Collections and displays that show the functioning of Model A components are especially needed as we begin to layout the exhibits. Contact Phil Lerardi at pni1938@gmail.com

As always, we continue to ask for your financial support. The current Quilt and Tire Raffle is based on a beautiful quilt created by Ruth Janke of California supplemented by a second drawing of two Diamond Tread Goodyear Tires from Kelsey Tire Company. Your club's MAFFI liaison, Mike Quam should have raffle tickets. You will also find photos and tickets at www.maffi.org on the quilt raffle page. The drawing will be September 15th and you do not have to be present to win. We have also received a very generous gift from the Whitehouse A's in Ohio, out of proceeds from hosting the MARC membership meet in April 2012. Thank you to the Whitehouse A's!

Congratulations go out to MAFFI editor Stephanie Grundman who was awarded the MAFFI Volunteer of the Year Award. Stephanie has been serving as our newsletter editor for several years and does an great job with the newsletter and everything else she tackles. At Marquette we thanked departing members of the board whose terms had expired – Howard Minners, Loukie Smith, Jay McCord, and Gary DuPen and welcomed new members Rob Seiter, Janice Barker, Anne Nealy-Beck, Don Miller, Rob Mills and Steve Ribeau. Great people who are working hard to make it your museum.

MAFFI Trustees

Model A Day at Gilmore:

Many people have worked very hard for the past thirty years raising money, locating vehicles and other memorabilia. The building will be turned over to the Model A Ford Foundation Inc. on September 15, 2012. Come help us celebrate, be part of history. Bring your Model A, if possible, but come!

I have attached a flyer you could send along to other club members letting them know about our Model A Day at The [Gilmore Car Museum](#), in Hickory Corners, MI. September 15, 2012.

Sincerely,
John LaVoy
Vice President
Model A Ford Foundation Inc.



Second Annual

Model A Day at Gilmore

Saturday



September 15, 2012



Gilmore Car Museum, Hickory Corners, MI

Bring your Model A Ford, your picnic and
your friends for some good old fashioned fun
and

SEE FOR YOURSELF THE NEW MODEL A FORD MUSEUM BUILDING

**Get a photo of you and your Model A in the museum building
- bring a Model A part, accessory, collection, cash donation
or a whole car to present to the museum. - Ribbons will be
given to people wearing era clothing.**

Schedule:

- 9 - 11 AM** Cars arrive individually, and in groups. Admission \$10 per person
General touring of Gilmore grounds and buildings
Ongoing individual car photo shoots in museum.
MAFFI Info table at museum with brochures and membership information
- 12 NOON.** Picnic Lunch (brought by visitors) on the grounds. Diner and Café open.
Free ice cream courtesy of the Model A Ford Foundation
- 1 PM-** Welcome Ceremony at the museum.
Introductory and welcome speech;
Dedication/Champagne christening on the building's "bow"
Drawing of door prizes, 50/50, Quilt and Tires raffle drawing
Guided tours of the building; Explanation of exhibit plans;
- 1:30-4 PM**
Continuation of photo of individual cars/donations in the museum
Seminar on one or more selected subjects
- 4PM** Closing ceremony, Thank you speech

You will have an opportunity to get a treasured photo of you, and your car, inside the museum. Drive in the front door, drop off your museum donation (memorabilia or cash donation) to the museum, have your picture taken, then drive out the back door.

For directions, see Gilmorecarmuseum.org – plan a visit

Invitation from the Minnesota Club members who come
to the Rapids Reunion, everyone is invited.

Whitewater 2012

Get together with your Model "A" Friends October 10-14, 2012

Registration is now open for the 2012 Model "A" Get-together, October 10-14 at the Whitewater State Park Group Camp in southeastern Minnesota. The camp will be open for early birds on Wednesday, Oct. 10, at 1:00 p.m. and will close after Sunday breakfast and clean-up October 14.

Over 75 Model "A"ers attended in 2010, from Iowa, Minnesota and Wisconsin.

Location:

Take HWY. 74 north from St. Charles then turn west on the gravel group camp road at the bottom of the large hill near the south end of the park. Park Headquarters and the RV campground are further north on HWY. 74.

Meals:

Breakfast and dinner will be provided in the camp dining hall and mid-day lunches will be at your expense during touring activities. Use of the commercial kitchen for packing lunches is an option, and you are welcome to use the large walk-in cooler for storing food and your favorite beverages or snacks.

Fees:

Adult pre-registration cost is \$40 per day or \$45 per day per person after September 15. An early bird fee for Wednesday allows full use of the camp. *There are no partial daily fees for selected attendance of events.

Entertainment:

Evenings will be geared for relaxed conversation and fun, (bring cards and puzzles), with formal entertainment on Saturday night.

Where to Stay:

Sleeping cabins are available at the group camp at no extra charge. Just bring a sleeping bag or bedding. A separate shower and modern bathroom building is nearby.

State park campground reservations for tents or RVs can be made by calling the DNR at 866-857-2757 or by reserving on line at www.dnr.state.mn.us/state_parks/reservations.html

The Whitewater Valley Motel in St. Charles, 507-932-3142, is five miles south of camp. Rates start at \$50 for double occupancy. Motels are also available in Winona or Rochester.

Tours:

Check-in Wednesday afternoon and enjoy the park on your own. An evening dinner drive is planned. Organized tours will leave Thursday through Saturday.

Park Vehicle Stickers:

Required vehicle park stickers must be purchased at park headquarters one mile north of camp. If you trailer your Model "A" You only need to purchase a sticker for the tow vehicle. You will also be given a "towed" vehicle sticker.

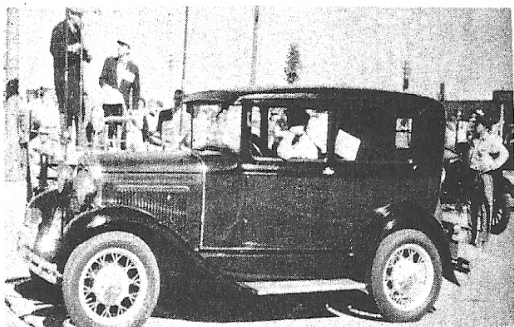
Contact:

For more information or questions contact Shirley Lind at 507-289-2056 or E-mail whitewater-modela@yahoo.com.

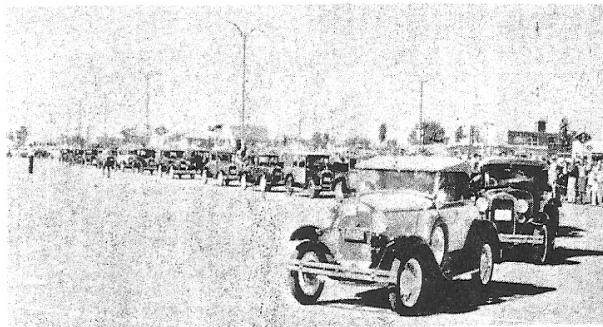
We look forward to seeing you at the Whitewater Get-together on October 10.

Reminiscing with the Historian

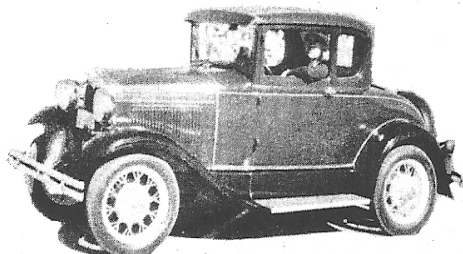
Submitted by Art & Sue Blazek (as it appeared in the Model A Ford Club News Bulletin)



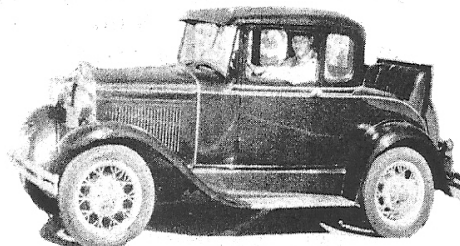
Carl Olsen in his 1931 Tudor Sedan, one of the few fully restored Tudors in Wisconsin.



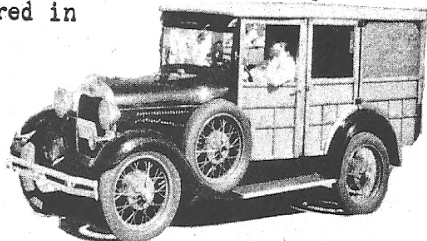
View of the Capital Court parade line-up, Model A's as far as the eye can see are in the photo above.



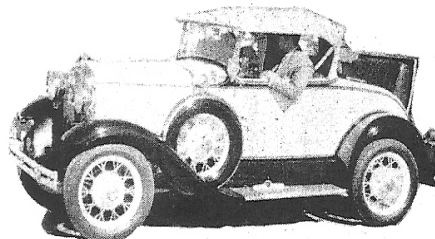
Wally Klagger's 1930 Coupe, Restored in Thorne Brown, With Tocoma Cream wheels and Stripe. One of many coupes being restored in Wisconsin.



Ronald Werderitsch in his 1930 Coupe, his car is finished in Ford Coach Maroon. He uses his car daily the year 'round.



Jim Marasco's 1929 Station Wagon, the only one restored in the Wisconsin club.



Garford Schulze's 1931 DeLuxe Roadster, The first fully restored car in the Wisc. club, and always popular at meets.

THE 1958 CAPITAL COURT WISC.MEET

by Demo Staver, Editor

(all photos by G.S.Schulze)

Capital Court Shopping Center played host to Wisc.Antique fans again this year, and with full participation by all clubs, ended up as being the biggest Wisconsin held meet to date. The date was September 21st, 1958, the weather perfect, the cars participating numbered 101 and the viewing crowd estimated at 15,000. This beautiful weather inticed restorers from as far as Beaver Dam, Fod du Lac, Madison and points North.

This meet was a departure from the standard public viewing, in that entertainment was provided the viewers. The activities were started with a ALL CAR parade around the Court area, all cars participated in this, and appropriate comments were made as they went by the stand by Webster Woodmansie, (AACA Rolls-Royce devotee) This was followed by the judging of restorations in all classes. The judges were selected from all clubs entered.

After the selecting of the 'best' in each class the bat customed couple was selected, after which the starting of the contests was announced, and one by one the events pre-ceeded in orderly manner.

Shopping for Model A Tires

Tires aren't pretty but they sure are important. Here are some facts and figures about our Model A tires that may be useful the next time you are shopping for tires.

Ford built Model A's with two different diameter wheels. Cars in the model years 1928 and 1929 used 21-inch tires, and cars in the model years 1930 and 1931 used 19-inch tires.

In addition to diameter, Model A tires have a size designation based on the dimensions of the sidewall and tread. The 21-inch tires are size 4.50 and the 19-inch tires are size 4.75. Today's modern replacements for Model A tires are usually sold in size ranges, such as 4.75/5.00-19 or 4.50/4.75-21. These tread-and-sidewall sizes are very close to each other, so as long as the range includes the number 4.50 for 21-inch tires or 4.75 for 19-inch tires, the tires will be appropriate for your Model A.



These numeric sizes seem quite odd compared to modern-car tire sizes such as 215/65-16 or 245/50-17, but that's because the tire industry has changed the way it designates tread and sidewall sizes two or three times since the 1930s.

Model A replacement tires are usually bias ply tires, although high-priced radial tires are available in some Model A sizes.

Bias ply construction means the tire's fabric contains cords that run diagonally from one bead of the tire to the other. Each ply is at an opposite angle to each other, creating a crisscross pattern. Radial tires, on the other hand, are built with cords that are all perpendicular to the bead.

Bias ply tires flex easily, providing a smooth ride that is beneficial to our Model A's. The flexing, however, causes greater rolling resistance and less control at higher speeds, which is why modern cars use radial tires.

Model A replacement tires are usually made from nylon or polyester.

Nylon is quite strong but it is stiff when cold, which is why Model A's with nylon tires seem to "bump" down the road for a mile or two when first driven until the tires heat up and the sidewalls soften.

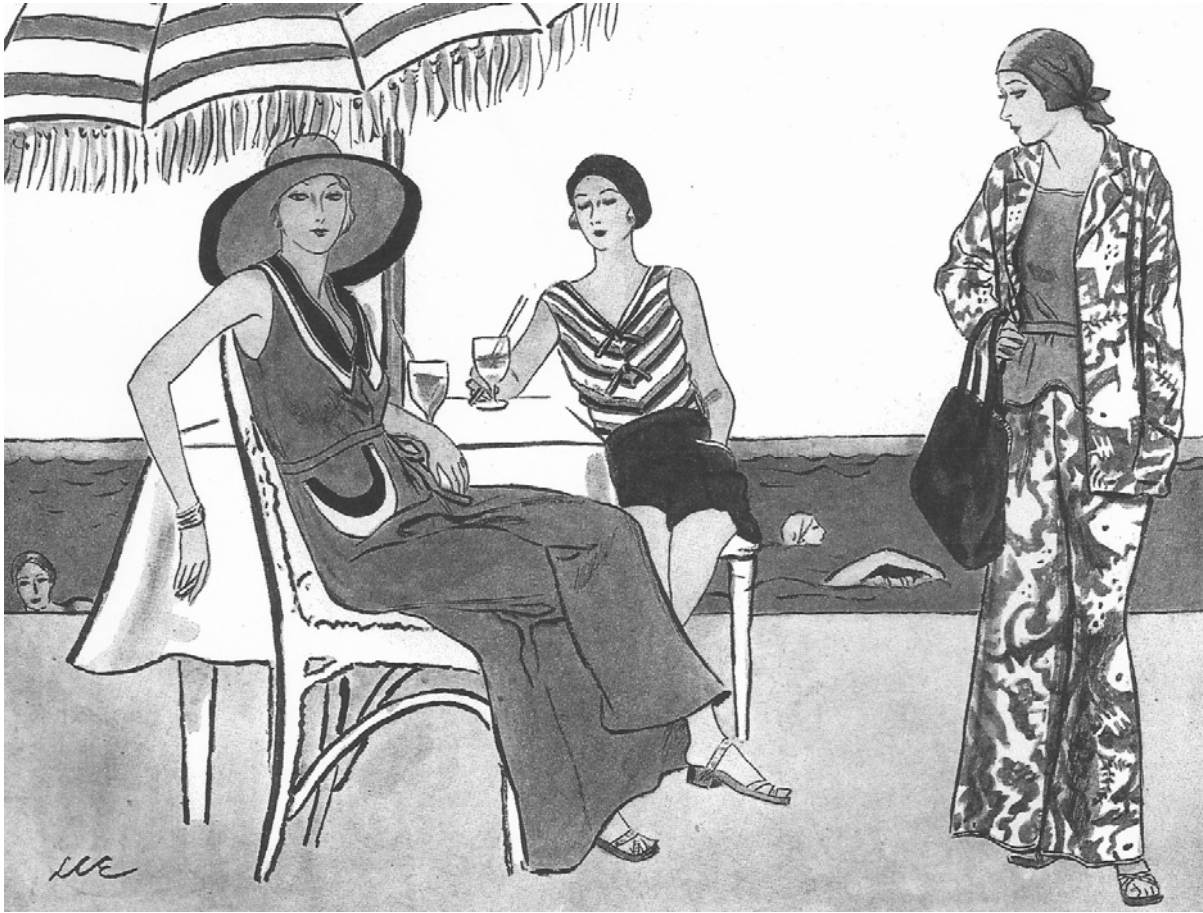
Several brands of Model A tires are available, including the big names like Goodyear, Firestone, BFGoodrich, and Excelsior, and less expensive brands such as Universal and Lucas. You may also come across some older brand names, such as Denman. Some of these tires, particularly the more expensive brands, are molded with tread patterns original to Model A's and are available in blackwall and whitewall. In general, our club members don't seem to favor one brand over another; it is a choice of style and economics.

Goodyear and Firestone tires can cost \$150 each or more; the economy tires can be purchased for about \$100 each. Most retailers sell the same brands of tires for about the same price, although shipping costs can vary quite a bit if you are not buying your tires locally.

All Model A's use tubes, so if you are shopping for tires be sure to budget another \$15 or \$20 per wheel minimum for tubes, more if you want to use metal valve stems to match the look of our Model A's when they left the Ford factory. While you can re-use your old tubes, you are better off with new tubes when getting new tires. – Neil Besougloff, Technical Chairman

Harper's Bazaar, June 1930
 For Bathing and "Basqueing" on Smart Beaches

Fashion page by Diane Smith



Left: Shantung silk pajamas—all in one piece in the new princess fashion—very wide, very bright and very smart. Earth-brown, green or blue.....19.75

Cork clogs.....3.50

An enormous shady straw hat.....1.95

Upper Center: Two-piece wool jersey bathing suit with a striped Antibes (France) top tucking into plain shorts; brown, blue, green or red.....16.50

Right: This is the new printed Shantung silk pajama ensemble; coat, bodice and trousers; white, and blue, white and green or white and orchid.....19.75

Rubberized silk kerchief.....3.95

Rubberized silk crepe bag.....6.95

Franklin Simon & Co.

A store of individual shop

Fifth Avenue. . . New York

Individual Beach and Bathing Shop. . . . Fifth floor

LOOKING BACK IN THE REARVIEW MIRROR

MAFCA National Meet

The day finally arrived and 5 Model A's and one modern left for Marquette, Michigan. We met another Model A just north of Green Bay. Our group consisted of the Bouchers, Brojanacs, Heinrichs, Taurmans, Wackers, Freezers and we met the Mazurkiewiczs on the way. On the way we stopped at the Wade House and toured the carriage museum. Then it was off to Marinette, Wisconsin.

The next day we left to complete our trip to Marquette. Upon arriving there we registered and got our agendas for the week. We attended various seminars and tours, went to the welcome party featuring the band the Da Yoopers. We also attended the pig roast and some of us went to the awards banquet.

Besides our group, our club was represented by Doug and Margaret Smith, Roger and Jan Olsen, Steve and Eleanor Gapko and Don Dezek and his wife. Mark Ackermann also joined us on Wednesday.

The best part of the trip was meeting people from all over the country and even New Zealand. Some of the attendees had been at the Oshkosh meet the week before and we talked with a group from California and they had been on the road 21 days by the time they got to Marquette. Their plan was to be back home by July 3rd.

There were about 400 Model A's in attendance of various body styles. I saw at least 5 A-400'S and you could not turn around without seeing a 31 Slant 4 Door. There were cars from every day drivers to the 497 Point Best of Show A-400.

All in all it was a very pleasant and worthwhile trip. Our group had one flat tire and one distributor problem, nothing serious enough to slow us down. Thanks to the Superior A's for all their efforts and a great meet. —Dave Boucher



LOOKING BACK IN THE REARVIEW MIRROR

On July 4th the club participated in the **Franklin 4th of July parade**. The day was hot (105 degree's) and sunny but 5 cars showed up to brave the weather and show off our Model A's.

Those in attendance were Linda and Dave Huenink, Harold and Mary Powell with Becky, Alexia and Jayden, Mike Brauch with his grandsons Dillon and Colton Sherwin, and Richard and Bonnie Morchell and their grand daughters. Morgan the wonder dog decided to stay home in the air conditioning in his dog house. All who attended had a great time and a lot of good conversation with each other.

None of our cars over heated although a few came close, but we were ready with jugs of water should some radiators need to be filled. I want to thank all who attended on this very warm day. —Dave Huenink.



LOOKING BACK IN THE REARVIEW MIRROR

We survived the 4th of July Parade

By Bill Dickinson

You have, no doubt seen a bumper sticker that proclaimed some astonishing feat. "I closed Wolski's" comes to mind. Well 20 or more people and I survived the Greendale 4th of July Parade. I personally want to thank you for your valor and forbearance. Your goodness is rewarded. Sheryl and Terry Patzke assumed responsibility for the event this year. They were elated. In fact Sheryl greeted Karen and I at the end of the parade and had all sorts of good things to say including complements for the number and variety of machinery we presented. I was hoping for variety in this year's parade and I got it.



Besides the usual well restored Model A's, this year was augmented with Bob Lumley's "before" project car. I was thrilled to see him come ripping into the staging area. His spritely entrance made him the first car there. Note worthy were his home made corduroy seat covers. I was saddened to see that in his haste to get to Greendale that Bob had spilled chocolate malt all over the floor but his zest for the event was not dampened by the mishap.

In my mind the high point of the MAFCA column was Gary Schwabe atop his beautifully restored Ford tractor. As you may know Gary has a lovely red Model A closed cab Pick-up truck which was also in the column. What was rewarding to see was the number of people along the route who called to Gary with questions and complements. As the vehicle directly following Gary it was rewarding to see that we could provide interesting variety for the crowd.



Karen had lengthy discussions with the Patzkes about the position of the vehicles in the parade and it paid off. The argument was that placing the old cars at the end of the parade was placing unnecessary stress on the vehicles cooling capacity. The committee found the argument logical so our club was placed near the beginning of the column.

At about 103 degrees, I think everyone was ready to get to some air conditioning as soon as possible so it is truly fair for all who participated to say, it was fun. We are Americans and we survived the 4th of July Parade in Greendale!



CLASSIFIED ADS:

Classified ads, such as the ones seen here are free. To place your ad please contact the editor, Sue Quam at 262-785-9021 or by emailing your ad to: msquam@wi.rr.com Ads run for one month unless notified to run them again. Ads are due by the 15th of the month.

FOR SALE: 12 volt starter, new armature & field coils. \$100.00 1928-29 Radiator \$100.00 Call Dennis 262-337-0426

NEW MEMBERS:

Jerry & Leona Dempsey	Lee L. Paulus
90 Crimson Ln.	3445 S 38 th St
Oshkosh, WI 54902	Milwaukee, WI 53215
920-233-1658	414-389-5984
LeonaDempsey@hotmail.com	LPaulus526@aol.com
1929 2 door Sedan	1928 Tudor

SUNSHINE REPORT:

Barb Sonnen had knee surgery and Wally Kaufman was scheduled to go back into the hospital July 17th. We wish you both speedy recoveries!

If you have sunshine to report, please contact Steve Lewis 262-573-9821 or by emailing: awards@model-a-wis.com

Remember to let the club secretary know if you have a change of address, email or phone number. This includes SNOWBIRDS. Please let the secretary know when your leaving and when your returning, so there is no interruption in delivery of your newsletter.

NEED HELP WITH YOUR "A"? QUESTIONS THAT YOU NEED ANSWERS TO??

Call our technical advisers :
Wally Kaufman 262-628-3003
Roger Olsen 262-554-7058
Mike Brojanac 262-252-4340

OUTDOOR MEET ADVISORY TEAM

For help in running an event call:
Jim Kummer 262-895-2897
Stan Larson 262-251-1655
Dave Boucher 262-662-2273

Wheeling the "A"

Wisconsin Chapter MAFCA
Marilyn Brojanac, Distribution
N61 W15975 Beechwood Dr.
Menomonee Falls. WI 53051



Its so hot outside farmers are feeding their chickens crushed ice to keep them from laying hard boiled eggs!

New Membership Application

Name _____ Date _____

Address _____

City _____ State _____ Zip _____

Phone(_____) _____ E-Mail _____

Child or Children's names _____

Model A's _____

Send my newsletter via email _____ or US MAIL _____

Dues for 2012 for the Wisconsin Chapter, MAFCA:
Receiving the newsletter & roster via the internet is \$20.00
To receive the newsletter and the roster via the US Mail (first class) the
dues are \$30.00 New member applications are approved at the
monthly Board of Directors meeting, which is the second
Saturday of the month. You will receive a welcome letter upon
approval. Dues include membership only in the
Wis. Chapter MAFCA until the end of the current calendar year.

Send To:
Mike Clinnin
Vice President/New Member Chairperson
Wisconsin Chapter, MAFCA
PO Box 26006
Wauwatosa, WI 53226-0006

****AUGUST 2012 ****