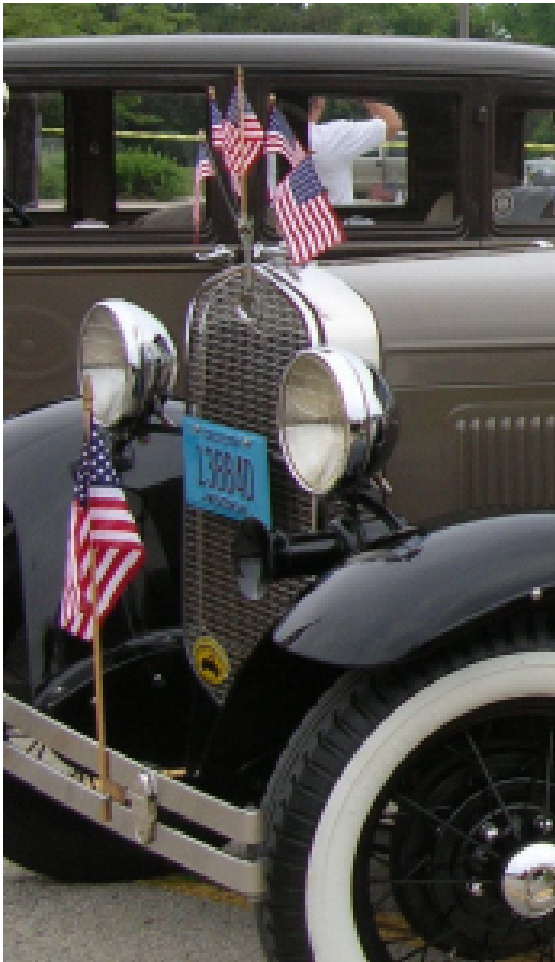


# Wheeling the "A"



*The official newsletter of The Wisconsin Chapter Model "A" Ford Club of America*

VOL L ISSUE 8 CIRCULATION 294 AUGUST 2009



J  
u  
l  
y  
4  
t  
h  
P  
a  
r  
a  
d  
e



It is the intent of the Wisconsin Chapter to serve as a medium of exchange of ideas, information, and materials for admirers of the Model A Ford and Model A era fashions; to help those admirers become better acquainted; and to maintain among its members the spirit of good fellowship and sociality through sponsored activities including the use of the Model A and family participation.

For more information about us: log on to [www.model-a-wis.com](http://www.model-a-wis.com)

## Board of Directors 2009:

**President:** Marty Jannsen  
262-246-7273 president@model-a-wis.com

**Vice President:** Mike Quam  
262-785-9021 vicepres@model-a-wis.com

**Secretary:** Sue Quam 262-785-9021  
secretary@model-a-wis.com

**Treasurer:** Paul Piotrowski  
262-513-1089 treas@model-a-wis.com

**Outdoor:** Dave Boucher 262-662-2273  
outdoor@model-a-wis.com

**Indoor:** Dan Kane 414-466-6750  
indoor@model-a-wis.com

**Technical:** Roger Olsen 262-554-7058  
techmeet@model-a-wis.com

**Club Accessories:** Bob Davisson  
414-543-2424 sales@model-a-wis.com

**Sunshine:** Dave Neuman 414-327-7170  
awards@model-a-wis.com

## Volunteers for 2009:

**Editor:** Sue Quam  
262-785-9021 Cell-414-491-3260  
editor@model-a-wis.com, msquam@wi.rr.com  
embroidersue@yahoo.com

**Webmaster:** Carl Doro  
414-259-9692 Webmaster@model-a-wis.com

**Club Property:** Rich Miller  
262-782-2240 richandliz@peoplepc.com

**Tool Keeper:** Bill Storey  
262-338-0452

**Paid Advertising:** Ed Schultz  
262-251-3043

**Distribution:** Marilyn Brojanac  
262-252-4340 marilyn@rodrian.com

**Distribution:** Lorraine Schultz  
262-251-3043

**Club Photographer:** Barb Sonnen  
414-771-1692 barb2sonnen@sbcglobal.net

**Video Librarian:** Ron Smith  
Home-262-628-3688

**Club Historians:** Art & Sue Blazek  
262-538-4474 ablazek@wi.rr.com

## ADVANCED TIMING SCHEDULED EVENTS FOR 2009-2010

- August 11 **Congregational Home Car Show**– 3-7:30 p.m. 3150 Lilly Rd. Brookfield Host Dave Huenink
- August 23 **Annual Picnic**– Hosts Dave & Linda Huenink **See page 2**
- Sept. 12 **Mitchell Manor Car Show**– 1:00 to 4:00 p.m. 5301 W. Lincoln Ave, West Allis Host Mark Ackermann
- Sept. 13 **September Tour**– Host Mark Ackermann **See page 4**
- Sept. 19-20 **Richfield Threshere**– Hosts Art & Sue Blazek **See page 4**
- Sept. 26 **International Model A Day**- Hosts Dave & Donna Boucher **See page 5**
- Oct 11 **October Tour**– Hosts needed
- Oct 15 **Technical Seminar**– **7:00 p.m.** Installing F100 Steering box into a Model A. Place: Mail Truck Model A Parts, 8509 S. Howell Ave., Oak Creek
- Oct 25 **Last Outdoor Tour**– Hosts Dave & Donna Boucher and Mike & Marilyn Brojanac
- Nov 7 **Veterans Day Parade**– Host Neil Besougloff
- Nov. 8 **FIRST INDOOR EVENT OF THE SEASON**– Antique Dealer At St. Aloysius Church—Gonzaga Hall 1414 S. 93rd Street, West Allis
- Nov. 12 **Technical Seminar -**
- Dec. 13 **Christmas Party-**
- Jan 10 **Elections and Custard Social-**
- Jan. 21 **Technical Seminar-**
- Feb. 14 **OPEN**
- March **Chili & Salsa Cook off**

***WE NEED YOUR EMAIL ADDRESS'S.....  
TO KEEP YOU UP TO DATE WITH NOTICES, EVENTS,  
CANCELLATIONS AND ILLNESS/DEATH NOTICES  
SEND YOUR EMAIL ADDRESS TO  
secretary@model-a-wis.com  
DON'T DELAY TO IT TODAY!!!***

# ANNUAL PICNIC– 8/23/09 NOON

Malone Park, 3953 S. Casper Dr, New Berlin, area #1



We will have the flavor of a summer picnic in Wisconsin - brats, burgers and hot dogs.  
Trophies and medals for game winners

**VOLUNTEERS NEEDED**  
call Dave Huenink at 262-378-4216.

## Model A Day at the Circus World Museum

Our Third Annual Model A Day at Circus World Museum (CWM) will be held on Saturday, August 22nd. The show will run all day, from 9 a.m. to 6 p.m., but you do not need to stay for the entire day. This is a joint meet between the Central Wisconsin Chapter, Nickle A Region, Wisconsin Chapter, and the Wisconsin Region.

This event is open to all Model A owners and their guests, who will receive **free admission** to the museum for the entire day. Ask those that attended last year's gathering, there is plenty to see and do at CWM. From the fabulous vintage wagons to the live exhibits - your day will be full!

Our affair is highlighted on the CWM website, so it will certainly draw attention from car enthusiasts that will visit the museum just to see the Model A's.

Enter the Circus Grounds at the side entrance, near the intersection of Water and Rosaline Streets - west of the main circus entrance.



MIKE BROJANAC (414) 464-7814  
All Work Guaranteed

## THE BRAKE SHOP

7665 W. APPLETON AVE  
MILWAUKEE, WI 53222  
Complete Auto Repairing



Badger Plating Co.  
Specializing in:



## Custom Plating

Show Chrome • Gold & Brass  
Auto, Truck Parts • Motorcycle Parts  
Aluminum, Diecast • Antiques • Marines  
Powder Coating Frames • All Colors • Clear Anodizing  
Also Fix Bumpers • 5 Day Service Per Request  
Hours: Mon– Fri 9-5PM



Stan

[www.badgermetalfinishing.com](http://www.badgermetalfinishing.com)

4021 S. Kinnickinnic Ave.  
St. Francis, WI 53235

(414) 482-4820  
Fax (414) 482-4822

Email: [badgermetal@sbcglobal.net](mailto:badgermetal@sbcglobal.net)

## Sunday September 13th Tour

We will be visiting the Wind Point Lighthouse and the Racine Heritage Museum. The tour will end at Apple Holler.

This will be a combined tour with the Early V-8 Ford Club so it will be a good opportunity to see some other nice Fords.

More details to come!!

Questions contact Mark Ackermann 414-477-6302  
mackermann@milwpc.com



## 11th Annual Thresheree Saturday September 19th

Richfield Historical Park  
Entrance and Parking: Hwy 164  
(Between Pleasant Hill Road and Hwy 167)

Enjoy:

- Steam Engines Threshing Grain
- Abe Lincoln Impersonator
- Horses Plowing a Field
- Antique Tractors and Cars
- Demonstrations of Pioneer Skills
- Entertaining Music
- Children's Activities
- Steam Engines Sawing Logs
- Grist Mill and House Tours
- Interesting Items to Purchase
- Narrated Tours of the Park
- Tasty Food

Meet SATURDAY the 19th at the Friess Lake School Parking Lot at the corners of Hwy 164 & Holy Hill Road (167) at 9:15am. We will depart at 9:30 a.m. A pancake breakfast is available for purchase from 9-11:00 a.m. Lunch is available also, or bring your own. Events go on throughout the day; leave at your discretion.

Hosts: Art and Sue Blazek home (262) 538-4474 cell (262) 370-4066

### AUTOMOTIVE **ENGINE REBUILDERS** "Where Quality Matters" INC.

COMPLETE MACHINE SHOP SERVICE • ENGINE PARTS  
BALANCING • CRANKGRINDING • CUSTOM MACHINING  
INDUSTRIAL • HIGH PERFORMANCE • CLASSICS

1604 Arcadian Avenue  
Waukesha, WI 53186  
(262) 521-2250



Donny Kompas  
Operations Manager

[www.ENGINE-REBUILDERS.com](http://www.ENGINE-REBUILDERS.com)

We take "*Special Care*" when  
restoring or rebuilding your  
Antique or Classic radiator.



**J & R Radiator**  
A/C & Exhaust

Chanhassen, MN      Hutchinson, MN  
952-474-5258      320-587-4328

*Serving the collector since 1979*



**DON'T MISS THIS ONE!**

**SATURDAY SEPTEMBER 26<sup>TH</sup>**

## **INTERNATIONAL MODEL A DAY**

Be part of this world wide event. We will be leaving Mc Donald's at Hwy 164 and ES (National Ave.)

At 8:30 a.m.



Our first stop will be at the Vintage Wings and Wheels Museum in Poplar Grove Ill. Poplar Grove is southwest of Sharon WI. Here we will see among other things 1937 hanger from Waukesha Airport, a 1920's Sunoco Filling Station, a 1928 Cessna AW plane, a 1930 LaSalle coupe and many other buildings, planes and cars including Model A's. Admission is \$5.00 for adults, \$4.00 for seniors and \$3.00 for children. At this point if you have had enough history you can tour back home or go on to the Midway Village Museum about 10 miles away.



Here we can see historic buildings and a WWII re-enactment. They will have a WWII re-enactment battle at 1:30 p.m. and 3:30 p.m.. There will be vintage tanks and other 1940's era military vehicles on display. Food and drinks will be available on the grounds. Admission is \$8.00 for adults and \$4.00 for children and free to WWII vets. Come join us for a half or a full day tour on this special Model A day.

Any questions please call.

Dave & Donna Boucher

Phone: 262-662-2273

### **Templin's Old Time Auto, LLC**

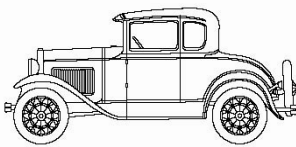
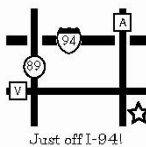
Model A Ford Parts New, Used, & Rebuild  
1022 Mulberry St./County A • Lake Mills, WI

*We offer mechanical repairs, specializing in Model A's*

Mon/Wed  
2:30 pm - 7:00 pm  
Tues/Thur  
4:30 pm - 7:00 pm  
Sat  
9:00 am - 4:00 pm  
Fri - Closed  
By Appointment Only  
Also Closed on  
Sundays, Holidays  
and Swap Meets

Orders can be faxed or e-mailed in at anytime

(920) 648-5282 - Phone • (920) 648-5920 - Fax  
jeff@oldtimeauto.net



www.oldtimeauto.net • Jeff Templin, Owner

## **Milwaukee's Dry Stripping Headquarters**

**262.781.8884**  
4907 North 124th Street  
Butler, WI 53007

### **Specializing in:**

- Industrial Blasting and Painting
- Automotive Paint Stripping
- Metal Furniture Stripping and Refinishing
- Do It Yourself Sandblasting Cabinets

**U-SPRAY**  
INCORPORATED

# SUNDAY OCTOBER 11<sup>th</sup> 2009

## FALL TOUR

Plans are in the making for our Fall Tour. Full details next month. This is always a great time of the year to drive your Model A. Don't miss this one.

## Sunday October 25<sup>th</sup>

### Last Tour of the Season

We will be touring to Elkhorn to see Watson's Wild West Museum. From there, we will go to the Big Bend Lion's Club House on the Fox River, a very picturesque spot. Details next month. If you have any questions call the Boucher's or the Brojanac's.

#### Only 1,000,000 Miles To Go

Starting this fall MAFCA will begin the Million Mile Challenge. Chapters from around the world will join together with the goal of driving their combined Model A's a million miles in one year. Chapters will be on the honor system to record the total miles driven by the members each month. The numbers will be tallied and awards given to those MAFCA members participating in the challenge. Watch for more information in coming issues of *The Restorer* and on MAFCA's web site.

## Where Do I Go?

Need help finding someplace to fix your car, sell your house, balance your budget or just grab a burger? Check your Wheeling the "A". If you use the service of one of our advertisers tell them you saw it in Wheeling the "A". These ads generate extra revenue for our club. Ed & Lorraine Schultz have been doing a great job in this position for years. Thanks Eddie & Lorraine!!!!



OPEN  
Monday-  
Saturday  
10:30 am  
to  
7:00 pm



Closed  
Sunday's

3146 S. 27th St



## Listen Up & View Too

The set of "Ford Show Quarterly" videos plus our own Wisconsin Chapter related videos are now available on DVD. (Thank you to Dennis Pierce for converting the videos to DVDs!)

Some of your favorites include: 1929 "A" assembly, Those 30 years Part One, Rhapsody in Steel, Ford and the American Dream, Diagnosing Engine Noise, Front End Assembly, Autumn Trails, Model "A" Introduction, and A pictorial history of the Wisconsin Chapter.

Look in the back pages of your Wisconsin Chapter roster for a list of available videos. \$10.00 deposit for VHS tape or DVD, 45 day limit on loan. Arrangements can be made with the librarian for delivery method, at my home, at a meeting or by mail for \$5.00 postage and Handling fee.

Contact Ron Smith in Hubertus, WI for your favorite VHS or DVD at 262 628-3688.

## *Sunshine Report:*



Chris and Kate Rozman welcomed a new baby girl into the world on July 12th. Brooke Alma was born at 9:48 a.m. weighing in at 9 lbs. 14 oz. and is 19 inches long. Congratulations!!!

Carl Doro had cataract surgery on both eyes, then during eye surgery recovery missed a basement step and cracked his ankle.

Ed Churchill got a new left knee on July 21st.

Emma Smith just completed her stint as a munchkin in the Hartford Players "Wizard of Oz" production.

Our sympathies to Don and Martha Roethig on the passing of their son and to the family of Gus Kosalos. Gus passed away mid July.

Our May tour host, Mr. Don Woelbing of Carma Labs, passed away in early July.

## **NOTES from the Editor:**

PLEASE remember that if you are hosting an event, I NEED your information 2 months prior to the event. WHO, WHAT, WHEN, WHERE and meeting place apply to articles. If no information is provided to me, your event will not get into the newsletter in a timely manner.



Also keep ALL articles to one page or under in length.

Deadline for articles is the 15th of every month.

Thank you!!!

Sue Quam



## WELCOME NEW MEMBERS.....

Dennis & Lynn Wagner  
W280 N8012 Black Diamond Ct.  
Hartland, WI 53029  
1931 Tudor Sedan

William Hesketh  
21 N. 12th St.  
Oostburg, WI 53070  
847-997-1275  
billythekid9@verizon.net  
1928 Fordor Leather Back

John & Rosemary Curtius  
2480 Hwy I  
Grafton, WI 53024  
262-618-4510  
1931 Roadster

## ADDRESS & EMAIL CHANGES.....

Glenn Willcox  
560 Skinner Ave.  
Newmarket, Ontario L3X 2A4  
Canada  
glenn40b@gmail.com or  
glenn@model-a-wis.com

David Uihlein  
1210 W. Estates Dr. #N124  
Mequon, WI 53092-8553

Jack Manalli - jm1214@att.net

## E-mail Updates

All members with an email please let us know your email address, if you don't have it listed in the roster. We will be sending reminders of events by email to reduce our postage costs. Send email address's to:  
[secretary@model-a-wis.com](mailto:secretary@model-a-wis.com)

Wisconsin Chapter Member  
Al Downs

## Mail Truck Model A



Providing all of your Model A needs  
8509 S. Howell Ave  
Oak Creek, Wi 53154  
414-762-7288

We now offer shipping and Model A Service

*Livin' the "A" Life...*

**Marty Jannsen, CPA**



Collector of Practically Anything



Wealth Management • Tax • Accounting  
HR • Information Technology • Payroll

262.513.9292 • 262.513.9282 fax

[Marty.Jannsen@jannsen.com](mailto:Marty.Jannsen@jannsen.com)

[www.jannsen.com](http://www.jannsen.com)



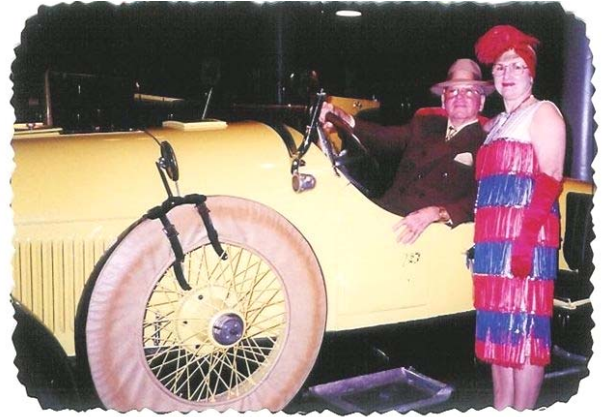
***From The President.....***

There was a good turnout for the car show at the Virginia Highland Health and Rehab facility on June 20<sup>th</sup>. Bob Davisson put on an impromptu tour around the parking lot for a number of the residents. I am sure they enjoyed it. Our reward for attending was a free lunch. Thanks to Dave and Donna Boucher for hosting.

The 4<sup>th</sup> of July parade in Greendale was a fun event. Thanks to Paul, Pat and Joy Piotrowski for organizing the event and providing rations for the trip. Joy offered to buy Roger Olsen a milkshake. You will have to ask Roger why Joy made the offer.

Thanks to Dave Huenink for organizing the 4<sup>th</sup> of July parade in Franklin.

The July 12<sup>th</sup> tour hosted by Gene and Betsy Taurman to the Hartford Auto Museum looked very interesting in viewing the photo gallery on the club website. The Mother-In-Law Kissel roadster was used by Jo Lene and I as a publicity photo for the Manor Park Foundation "Great Gatsby Gala" in 1997. I have attached a picture of us in 1997 with the roadster. Thanks to the Taurmans for hosting this tour. Sorry we missed the tour but thanks to the photographers and our webmaster Carl it is nice to be able to view the pictures.



[www.model-a-wis.com](http://www.model-a-wis.com)

Jo Lene and I are in the process of moving to a condo. We have had estimates from "friends" that it will take from three months to three years to complete the move. If you have been to our house you will understand the time needed to pack. We have been working seven days a week packing and moving. Hopefully we will have our house ready for listing by the end of August.

Please forward your email address to Carl so he can inform you of events, changes in dates and whatever else he has to send to you. Also, please send a picture of your favorite A including yourself for the picture roster.

Keep those A's on the road and enjoy the touring season.

***Marty***

**THANK YOU**

The weather could not have been better for our car show at Virginia Highlands Health and Rehab Center in Cedarburg. It was great to see the smiles and joy on the faces of the residents that our cars provided. Lunch was provided to us and it was great to get together with other club members for this worthwhile event. Those club members in attendance were:

- |                                  |                       |
|----------------------------------|-----------------------|
| Dave & Donna Boucher             | Walt & Sally Kaufman  |
| Jim Berenz & granddaughter Casey | Ed & Lorraine Schultz |
| Mike & Marilyn Brojanac          | Jim & Marlene Stegner |
| Bob & Sandi Davisson             | Gene & Betsy Taurman  |
| Marty & Jo Lene Jennsen          | Dennis & Anne Wacker  |
| Sal Fugarino                     |                       |

Again, Thanks to all who attended.  
Dave & Donna Boucher

**150th Anniversary Pony Express Model A Tour June 19-27, 2010**  
**Sponsored by Model A Ford Club of America**

MAFCA's exciting National Tour in honor of the 150th Anniversary of the famed Pony Express is well underway. To subscribe to our free 150th Anniversary Pony Express Tour E-newsletter, The Pony Express Post, send an email to ponyexpress150@mafca.com Write "Subscribe" in the subject line and include your name and address.

You'll receive  
Early information and details about the tour  
Historical tidbits about things to see and do along the way  
Be among the first to receive the registration packet.

The 150th Anniversary Pony Express Tour is a MAFCA-sponsored event.

Teams will leave St. Joseph, Missouri and Sacramento, California and will meet in Casper, Wyoming for a special celebration there. The Tour will be structured so you can go all the way, part of the way, or just for the day! Yes, we'll actually be carrying very special mail during the event.

Lead cars from both ends will be equipped with live GPS sending units and the teams will be able to be tracked via a unique Web site. Visitors will know where the lead cars are within five minutes.

Watch The Restorer magazine and mafca.com for more details. Better yet, subscribe to Pony Express Post for the earliest and latest information.

Are You Interested in Buying a new Home or  
Selling your present Home?

Call Dave and see how much you can save !

FirstWeber Group Realtors  
David Dohmeyer, CRS, GRI, Broker Associate  
Office Direct (262) 251-7200 ext 1439  
Home Office (262) 251-0391

**MIKE'S REPAIR SERVICE**  
Model A Ford and Early Mustang  
Parts and Service

**Mike Quam, Owner**  
**16130 Top-O-Hill Drive**  
**New Berlin, WI 53151**

Visa and Mastercard Accepted  
**(414) 491-3191 • (262) 785-9021**

***John's Antique Auto Parts***

10841 Bruns Road  
Monee, IL 60449

Phone (815) 469-4799 • Fax (815) 469-4417  
Toll Free (888) 865-3452

**Model A Short Blocks - \$1375**

Hot Tanked, Cylinders Bored & Honed, Decked,  
Reground Crank, Reground Cam (B Grind)  
**All Blocks Get New:** Babbit, Pistons, Rings,  
Stainless Steel Valves, Guides, Lifters,  
Hardened Valve Seats, Springs,  
Fibre and Steel Timing Gears

**Other Options Available:** Long Block,  
Center Main Oiler, Oil Pump Rebuild,  
Head Resurfaced, Manifold Resurfaced

Available immediately on exchange basis  
- or -

Have yours rebuilt (short turn around time)

Free Engine Delivery Within 125 Miles  
Other Model A Parts Available  
5% off all Model A Parts for 1 year with purchase of engine  
(Excludes Engine Parts)

*Now that you've seen the rest ask why ours is best!*

## WI Chapter MAFCA Board of Directors Meeting Minutes for July 18, 2009

Present – Dave Boucher, Marty Janssen, Dan Kane, Roger Olsen, Sue Quam, Mike Quam, Bob Davisson, Paul Piotrowski. Absent – Dave Neuman

President Janssen called the meeting to order at 7:05 p.m.

**Vice President** – Mike Quam: Received 3 new membership applications, they are: Dennis & Lynn Wagner, William Hesketh, and John & Rosemary Curtius. A motion to approve the new members was made by Bob D. and seconded by Roger O. Mike Q. brought up the idea of putting the by-laws on the website to save on postage when mailing the new member packets. Also suggested to be online is the roster. Marty J. suggested a section that is member password protected could contain by laws, roster, etc. Talk to webmaster about such a section.

**Secretary** – Sue Quam: Minutes from previous meeting were approved as written by a motion made by Dan K. and seconded by Dave B. With the three new members added tonight we are at a total of 285 members.

**Treasurer** – Paul Piotrowski: Treasurers report gone over and a motion to approve it was made by Roger O. and seconded by Dan K. Invoices turned in, as well as income from new members and sales of accessories.

**Outdoor** – Dave Boucher: The Hartford Museum tour had about 35 people attend. Next year we will not schedule this tour up against Iola car show or the circus parade. International Model A Day is Sept. 26, Wheels & Wings in Popular Grove, IL will be one destination, and Midway Village a WWII reenactment. Oct 11<sup>th</sup> tour host has changed and Oct 25<sup>th</sup> tour is Watsons Wild West Museum.

**Indoor** – Dan Kane: Dates are set for the coming indoor events. The November meeting will be back in the old room. Contract should be signed soon. Need a chair person for the banquet in January, possible dates would be 23<sup>rd</sup> or 30<sup>th</sup>.

**Technical** – Roger Olsen: October 15<sup>th</sup> is the first technical seminar and the topic is installing an F-100 steering box on a Model A.

**Club Accessories** – Bob Davisson: Write up for the Restorer has been submitted. There maybe some issues with getting embroidered clothing from current supplier. Most employee's are laid off and orders aren't being

filled in a timely manner. Subject of a new supplier was discussed. Bob will check into this.

**Sunshine Report** – Dave Neuman: Sue reporting for Dave. Chris & Kate Rozman had a baby girl on July 12<sup>th</sup>. Carl Doro had cataract surgery on both eyes and also cracked his ankle when he missed a step. Don & Martha Roething's son passed away. Ed Churchill will have knee replacement surgery July 21<sup>st</sup>. Gus Kosalos passed away.

**Old business:** Marty J. hasn't been able to make contact with anyone at MAFCA on what the MAFCA insurance covers. Only one new email address has been submitted for updating records. Need to push for every members email address so we can try to go paperless with the newsletter the first of the year. More discussion needed to make plans for this at up coming meetings. Also have a section created on the website for members only. This section would be password protected and only members would know it.

### **New Business:**

**Swap meet:** The down payment for Washington county fair grounds for the 2010 swap meet will be made. Discussion followed about raising the price of admission. A motion was made by Sue Q. seconded by Paul P. to raise the admission fee to \$6.00.

**The By-Law change:** Need to advertise for the next two months the first indoor meeting, where a vote will be taken on whether or not to change the year terms of board members.

**MAFFI:** A letter from MAFFI came and they are asking for an annual gift for the museum. Issue was tabled for now.

**Iola Benches:** Mike Q. read in the Iola car show directory that the nice wooden benches placed around the Iola grounds can be purchased for a \$100 donation. A plaque with the clubs name will be attached to the bench. A motion was made by Roger O. and seconded by Dave B. to purchase one bench for \$100.00 to stay on the Iola grounds.

**Newsletter:** Over the past few months articles have been getting to large. Sue Q. suggested that any articles submitted stay to one page or less in size.

**Motion to adjourn** made by Mike Q and seconded by Bob D. 10:00 p.m.

Next meeting is August 8<sup>th</sup> at 7:00 p.m. at The Olsen's.

Respectfully submitted by,  
Sue Quam  
Wisconsin Chapter MAFCA





## Reminiscing With the Historian

FIFTY YEARS AGO, 1959 - No information is available.

FORTY-FIVE YEARS AGO, 1964 - The annual picnic was held at the Silver Key Resort on Kettle Moraine Lake.

FORTY YEARS AGO, 1969 - The picnic was held at Mukwonago Park, and we took part in the Waupaca reunion. The first Antique Transportation meet was held at North Freedom, Wisconsin.

THIRTY-FIVE YEARS AGO, 1974 - Five members from our chapter represented us at the MAFCA National Convention.

THIRTY YEARS AGO, 1979 - We joined the V-8 Ford Club for a tour to Hustisford. The picnic was held at Menomonee Park, and there was an outing to Great America.

TWENTY-FIVE YEARS AGO, 1984 - The Rozmans hosted the annual picnic at the El Dorado Retreat Supper Club on Bass Bay in Muskego. Bret Bartel hosted a tailgate party for the Brewers vs. Texas Rangers ball game.

TWENTY YEARS AGO, 1989 - The annual picnic was at Harnischfeger Park and was hosted by Dan and Kay Kwiatkowski. The food was catered and consisted of hot dogs, chicken, brats, two kinds of potato salad, and coleslaw.

FIFTEEN YEARS AGO, 1994 - The Board hosted the annual picnic at Minooka Park in Waukesha. The club participated in a car show at the Annual Franciscan Harvest Car Show.

TEN YEARS AGO, 1999 - Glacier Hills Country Club was the site of the picnic, hosted by Karen Sukkert. We were invited by the Historic Layton Boulevard Association to participate in a parade and ribbon-cutting ceremony for the re-opening of Layton Boulevard (27<sup>th</sup> Street) between National and Lincoln Avenue. The street is lined with homes built in the early 1900s.

FIVE YEARS AGO, 2004 - An impromptu tour was hosted by Pat and Paul Piotrowski and Roger and Jan Olsen. They arranged for the club to tour the Basilica of Saint Josaphat, a restored historical landmark of considerable Milwaukee significance. The group then headed to Robert's Restaurant for lunch.

Submitted by Art and Sue Blazek

### HDR Inc. - Heavy Duty Radiator Repair

N56 W13332 W. Silver Spring Road  
Menomonee Falls, WI 53051

**262-252-3920 FAX 262-252-3934**

**Bill Kowalefski**



*We Take Care of Leakers!  
Specializing in Any and All Kinds  
of Radiator Repair*

a Division of Automotive Engine Rebuilders, Inc.

Specializing in Sales and Service  
of Enclosed, ATV, Snowmobile  
and Utility Trailers



**WWW.AERTRAILERSALES.COM**

1604 Arcadian Avenue  
Waukesha, WI 53186  
**(262) 521-2250**

Authorized Dealers for:  
Pace American  
Triton, Karavan  
Newman's Sled Bed

# IMPROVED HEAD GASKET

## FOR STOCK AND HIGH COMPRESSION HEADS

Two new premium Head Gaskets are now available for the Model A. These gaskets were developed jointly by Don Snyder III (Snyder's Antique Auto Parts) and Walt Bratton (Bratton's Antique Auto Parts), two Model A parts manufacturers and dealers that are dedicated to improving and developing quality parts for the Model A.

The gasket is manufactured with a steel core that is covered with a high density OEM diesel engine gasket facing material. The facing material is bonded to the steel core using a high temperature bonding and sealing agent, which eliminates the chance of coolant passing between the two materials.

The steel core and gasket material is then heated and a black silicone coating is added over the entire gasket. The unique gasket material has the ability to absorb the silicone coating that is added. A red silicone is the final process and is added around the coolant passages and around the head stud holes by the manufacturer, giving added protection from leaking. No other sealants are to be used with these gaskets. The high density material used in this gasket is used for diesel engine applications that run in the 22:1 compression range.

The gaskets have passed the German D.I.N. compression tests, tested for 16 hours at a temperature of 567 degrees under a 7,100 psi clamping load. This test subjects the gasket to extreme pressure and temperatures.

### GASKET APPLICATIONS

These gaskets are made for two distinct applications. *The Model A Gasket, Figure 1, is made to be used only on a Model A block with an original Model A*

*head.* When used on a Model A block with any other head, the fire rings will not properly compress, resulting in possible compression leaks.

The Model B gasket, Figure 2, is identified with the wider center section and the two steam holes (identified with the two arrows in Figure 2). The Model B Gasket is to be used on a Model B block with a Model B head or a Snyder's High Compression head.

*The Model B gasket is also used on a Model A block when using a Model B head or a Snyder's High Compression head.*

Neither of these gaskets are compatible with a Brumfield head. Due to the shape of the combustion chambers, leaks may occur when using this gasket with a Brumfield head.

No more coolant weeping around the head! These gaskets can be ordered from Bratton's Antique Auto Parts, Snyder's Antique Auto Parts, or from most any Model A Parts dealer.

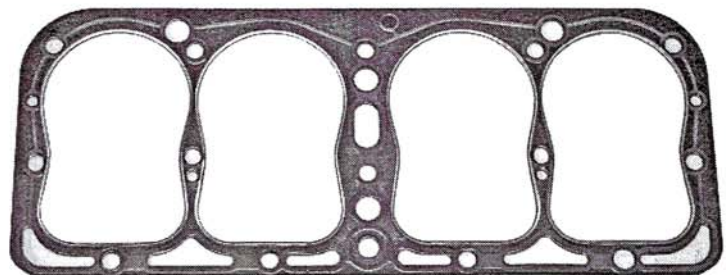


Figure 1. Model A Gasket

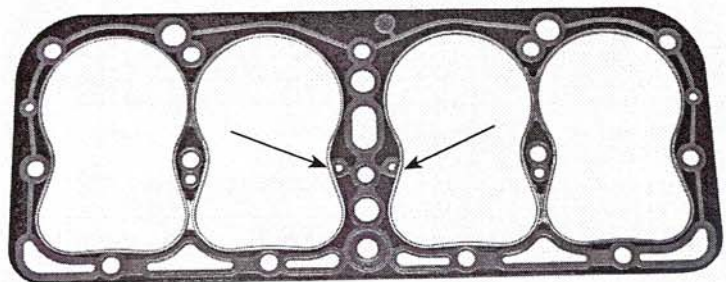


Figure 2. Model B Gasket

SPRING 2006 MODEL A TIMES 9  
Subscription \$25 per year



## LOOKING BACK.....IN THE REARVIEW MIRROR

### Memorial Day Weekend – La Crosse, Wisconsin

Our Friday and Saturday tours both started out in dry weather that quickly changed to an intermittent rain which lasted just long enough to get our cars dirty. The sun did come back out again and was shining brightly for most of our trip from Milwaukee to La Crosse.

We drove to the top of the 590 foot-high Grandad Bluff as we entered the City of La Crosse. We had a beautiful view of La Crosse and the Mississippi River Valley including the three states of Wisconsin, Minnesota and Iowa.

Saturday was the “Mystery Tour” over the Mississippi River to visit Watkins Museum and Store in Winona, Minnesota. Mr. Watkins was a pioneer in direct sales strategy. The company currently has more than 350 products on display and available to purchase, including spices and other household products.

Next we headed to L.A.R.K. Toy Company in Kellogg, Minnesota. L.A.R.K. Toys is a one-of-a-kind toy shop. They have an antique toy display as well as a huge assortment of children’s toys for sale and they are all neatly arranged in easy to find categories. Young and older alike could also enjoy a ride on the unique hand-carved animal carousel.

After lunch, we crossed back over the Mississippi River and had a much smoother drive down to La Crosse on the Wisconsin side of the river. Our trip was highlighted by watching three eagles fly high over the bluffs. We returned to the Settle Inn where we met our Milwaukee Saturday travelers led by Dave & Donna Boucher.

Sunday we woke up to a picture perfect Wisconsin day. We drove north on Hwy 35 along the river to Elmer’s in Fountain City. Elmer’s was worth the trip to see his antique toys, pedal cars, “real” cars and more collectibles. Elmer has an enormous collection that needs to be seen to be believed.

Later that afternoon we boarded the La Crosse Queen for a relaxing ride on the Mississippi River. The captain gave a very informative talk about the river as we cruised along. We had a delicious turkey and ham buffet as we enjoyed the perfect Wisconsin afternoon in perfect Wisconsin weather!

Some of us stopped at the Deke Slayton Memorial Space and Bicycle Museum in Sparta, Wisconsin, on our return to the Milwaukee area on Monday. This museum has permanent display which of Mercury 7 Astronaut Donald Kent “Deke” Slayton.

This is the only corner in the State of Wisconsin that has four State Historical Markers, designating the importance of the buildings' history - - The U.S. Post Office, the Sparta Free Library, the Monroe County Courthouse and the Masonic Temple.

Mark and Deb Zimmer surprised us when they presented us with A Memorial Overnighter Traveling Trophy. We have placed these trophies in a place of honor and promise to take good care of them until we can pass them on.

We missed Jerry & Mary Flynn driving on the Overnighter with us. We are glad to learn Jerry continues to improve and hope to see him back on the road soon. We also send our congratulations and very best wishes to Mary and Jerry on celebrating their 59<sup>th</sup> wedding anniversary on June 10th.

Thanks to all drivers and passengers who traveled to La Crosse and made our overnighter a fun time. Vehicles driven by our group included 22 Model A's, 2 Mustangs (1 classic & 1 modern), and 4 modern iron. Last, but not least, a Corvette joined us to get in on the good times Ford people have!

A Special Thank You to Al Downs and Marty and Jo Lene Janssen for all their hard work, suggestions and help designing routes and creating maps to make this a successful trip.

Make plans to join the good times on our 2010 Memorial Overnighter with Darrell Cornell & Marlene Drillsam and Stan & Pat Larson on their trip up north to Wau-paca!

Roger & Jan Olsen

***For more GREAT PICTURES go to  
[www.model-a-wis.com](http://www.model-a-wis.com)***





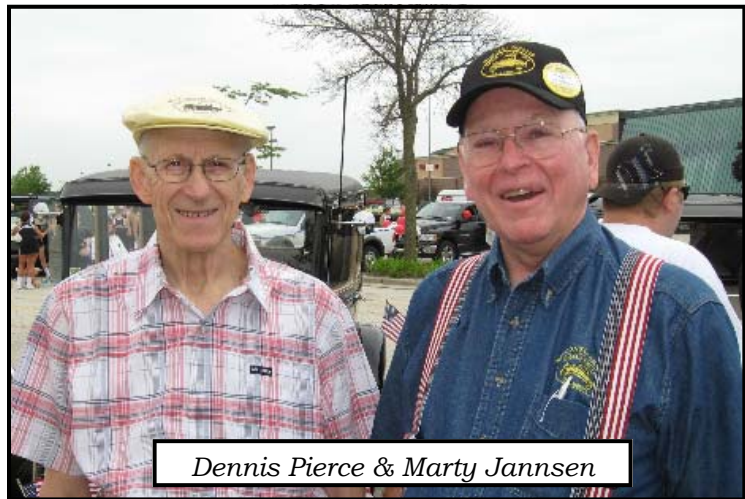
# LOOKING BACK.....IN THE REARVIEW MIRROR

## Independence Day Parade, Greendale Saturday, July 4, 2009

The weather certainly cooperated on this day!! Cloudy and comfortable. Spectators lined the complete route and enjoyed the sights and sounds of the Model A's. We thank Gary Schwabe's friends, Gary & Kevin Ellertson, who drove Gary's 1967 blue Mustang. For the first time, I had the pleasure of driving our 1970 Chevy Camaro in the parade with Pat & Joy.

Pat, Joy & I would like to thank the following club members and friends who joined us in the Village of Greendale Independence Day Parade:

Neil & Austin Besougloff  
Donna & Dave Boucher  
with friends, Wendy & Scott  
Marilyn & Mike Brojanac  
Sandi & Bob Davisson  
with friends, Shirli & Norb  
Karen & Bill Dickinson  
Lu & Carl Doro  
Carrie Frank & Jim Kummer  
JoLene & Marty Jannsen  
with daughter and son-in-law  
Kristi & Shawn Booth  
June & Nick Mazos  
Kris & Chuck Morgan  
Jan & Roger Olsen  
Marge & Dennis Pierce  
Lorraine & Eddie Schultz  
Gary Schwabe with friends  
Gary & Kevin Ellertson  
Diane & Ron Smith  
Barb & Bob Sonnen  
Marlene & Jim Stegner  
Anne & Dennis Wacker



Thanks!!  
Paul, Pat & Joy Piotrowski

# LOOKING BACK.....IN THE REARVIEW MIRROR

## Franklin 4<sup>th</sup> of July Parade By Dave Huenink

We had a great day for the City of Franklin parade. The weather was over cast and cool but the sun started peeking out when the parade started. 6 cars were in the parade. Those who attended are: Mike Bruch with a 1930 Coupe, Sandy and Mike Yokofich in a 1929 Fordor, Harold and Mary Powell in a 1928 Fordor, Richard and Bonnie Moschell in a 1929 Phaeton, Dave and Carol Rozman in a 1930 Town Sedan, Dave and Linda Huenink and Morgan the wonder dog in a 1929 Sport Coupe. Those that wanted to meet for breakfast did and had a quick mid-morning snack. All the cars ran great and every one had a great time. Mike Bruch brought his 2 grandsons who plan on being future Model A-er's and are eager for grandpa to teach them how to drive the Model A.



*Morgan the wonder dog*



### David Wanner Sculpture Studio Tour on June 14th

The words shake rattle and roll took on new meaning as we jolted across town on the jagged mismatched and broken concrete streets of Milwaukee. Thanks to this tour I found clunks in my clunker I did not know it had.

The tour was one of the best in spite of the city streets. We visited grand old and still lively neighborhoods by way of Milwaukee's famous river parkways and Washington Heights and Washington Park in route to our first stop at Cathedral Square.

At St Johns Cathedral on the square we were treated to a tour of the bronze sculptures conducted by David Wanner, a successful sculptor and interesting guide. Upon entering the cathedral your eyes go directly to the very modern bronze depiction of Christ and the crown of thorns by an Italian sculptor. Even though it was modernistic it fit into the ancient styles of the church and belonged there.

Next David introduced us to his own work, a life-size statue of Pope John the XXIII. Here he began the explanation of the processes used to make the hollow marvels. Even hollow, this one weighed 800 pounds. In an alcove opposite Pope John was a 7 ft cast bronze of the Virgin Mary urging followers to go out and serve.

*Continued on next page.....*





*Continued from previous page.....*

In the garden next to the church was another Wanner creation, "The Servant". This scene of Jesus washing a woman's feet, declares simply and unquestionably the mission He gave to Christians, serve your fellow man.



We rolled and jostled north along route 32 and over to the Police and Fire Academy to see another commissioned work entitled "On Watch".

Then after rattling west across town to the Wanner studio, we heard and saw more about how these marvels are made. There were also many scale models of his works and a 7 ft. clay sculpture that he is working on.



The process is multilayered starting with a clay model, then it is enlarged to the desired size. Then part by part shells are made so that patterns can be made. Wanner uses three casting methods, lost wax, sand casting and shell molding, once the parts have been cast he welds the parts together and makes the final finishing touches before crating and sending them off for the world to ponder.

After the studio visit we proceeded to the Athens Restaurant for friendship, a few hot appetizers and beverages. There were 42 adults attending, 1 child and 2 prospective members.



Gene & Betsy Taurman

## CLUB APPAREL

Call- *Times Custom Apparel*. 920-994-4396. Business hours will be Monday through Friday, 9:00 A.M. to 3:00 P.M.

When you call to place an order, the printing company's main switchboard will answer. At that time, please ask to be connected to *Times Custom Apparel*.

An updated order form can be found on the next page. The information on the form provides you with the ordering details.



Bob Davisson,  
Club Accessories





## 2009 MAFCA Annual Membership Meeting

Hosted by

### Great Lake A's Chapter

W249 S7070 Center Drive  
Waukesha, Wisconsin 53189

Wisconsin Chapter  
MAFCA

Dear MAFCA Chapter:

The Great Lake A's of Waukesha, Wisconsin cordially invites you to attend the annual MAFCA Membership Meeting and Banquet. This event will be held December 2<sup>nd</sup> through 5<sup>th</sup> at the Doubletree Hotel in Brookfield (Milwaukee), Wisconsin. This is a wonderful opportunity to attend this annual event when it is so close.

Some of the events planned are seminars, a welcome party with Valve Cover Racing, a tour to Discovery World and the famous Calatrava designed Milwaukee Art Museum, and a tour of the new Harley Davidson Museum. Enjoy a holiday evening with dinner at Mader's Restaurant, serving famous German dishes for well over 100 years, followed by attending a production of the Christmas Carol at the restored Pabst Theater. The four day event will close with a grand banquet on Saturday night to introduce your new 2010 MAFCA National Board. Check out the Restorer Magazine for a complete list of events or at [www.mafca.com](http://www.mafca.com).

Please consider putting this information into your chapter newsletter, so your members may be made aware of this gala national MAFCA event so close to home.

Sincerely,

Gary Zehren, Chairman  
2009 MAFCA Membership Meeting

## **Classified Ads:**

**For Sale:** 1929 Model A Roadster, dark green w/ black fenders. runs good, has LeBarron interior, rumble seat. \$15,000 Call Joan Matzke 920- 499-4676

**For Sale:** 1949 Packard 4 dr. sedan very reasonable. Also 30 pounds of R12 & 30 pounds of R22 Call John Barnish 262-367-3788

**Wanted:** Gas tank for early 1930 Ford Oval speedometer Bob Saur 414-940-0859

**For Sale:** 2 Intake manifolds, 1 exhaust manifold with heater, 1 water pump/rebuilt, 1 water outlet neck, 1 generator, 2 front springs (1 new & I used) , 1 rebuilt short block with pan, 1- 19" wheel and 1- 17" wire wheel. Call Ed Churchill 414-442-0625

**Last Chance:** Ron Smith is tired and is not building any more cars. Please contact him soon before something horrible happens to these irreplaceable parts—engines to mufflers, radiators to rumble seat and more. Please buy one or all. They will be gone this fall. Some complete cars for sale too! Ron Smith 262-628-3688

**For Sale:** 2001 VW New Beetle, excellent condition inside and out, 84,000 miles, good tires and brakes \$5995.00 Call Mike 414-491-3191

NEED HELP WITH YOUR "A"? QUESTIONS THAT YOU  
NEED ANSWERS TO??



Call our technical advisers :  
Wally Kaufman 262-628-3003  
Roger Olsen 262-554-7058  
Mike Brojanac 262-252-4340

Please send all Wisconsin Chapter  
Correspondence to:  
Wisc. Chapter MAFCA  
PO Box 26006  
Wauwatosa, WI 53226-0006  
Phone 262-513-0448

**For Future Paid Ads, Please contact:**  
**Ed Schultz**  
**N83W15288 Manhattan Drive**  
**Menomonee Falls, WI 53051**  
**Phone: 262-251-3043**

### OUTDOOR MEET ADVISORY TEAM

For help in running an event call:  
Jim Kummer 262-895-2897  
Stan Larson 262-251-1655  
Dave Boucher 262-662-2273

***Wheeling the "A"***

Wisconsin Chapter MAFCA  
Marilyn Brojanac, Distribution  
N61 W15975 Beechwood Dr.  
Menomonee Falls. WI 53051

**Address Service Requested**

Presorted Standard  
U.S. Postage Paid  
Permit No. 2684  
Milwaukee, WI

**New Membership Application**

**Name** \_\_\_\_\_ **Date** \_\_\_\_\_

**Address** \_\_\_\_\_

**City** \_\_\_\_\_ **State** \_\_\_\_\_ **Zip** \_\_\_\_\_

**Phone**(\_\_\_\_\_) \_\_\_\_\_ **E-Mail** \_\_\_\_\_

**Child or Children's names** \_\_\_\_\_

**Model A's** \_\_\_\_\_

*I understand that my \$25.00 dues include membership only in the Wisconsin Chapter, MAFCA, Inc. until the end of the current calendar year. New member applications are approved at the monthly Board of Directors meeting, which is the second Saturday of the month. You will receive a welcome letter upon approval.*

*The Wisconsin Chapter MAFCA, Inc. recommends that you consider joining the National Model A Ford Club of America with the additional dues of \$40.00 payable to them. Subject to change by National MAFCA and /or Wisconsin Chapter.*

***Make checks payable to Wis. Chapter MAFCA***

**Send To:**

Mike Quam  
Vice President/New Member  
Chairperson  
Wisconsin Chapter, MAFCA  
PO Box 26006  
Wauwatosa, WI 53226-0006  
Phone 262-785-9021

**\*AUGUST 2009\***