

Wheeling the A

The official newsletter of the Wisconsin Chapter
Model A Ford Club of America

Volume LV Issue 5

PO Box 26006 Wauwatosa, WI 53226-0006

May 2014



From June 2009

Are you ready for some touring?

For more information log on to www.model-a-wis.com

Board of Directors 2014:

President: Mike Quam 414-491-3191 president@model-a-wis.com
Vice President & Awards Steve Lewis 262-573-9821 vicepresident@model-a-wis.com
Secretary: Dave Huenink 262-378-4216 secretary@model-a-wis.com
Treasurer: Paul Piotrowski 262-513-1089 treasurer@model-a-wis.com
Indoor: Dave Boucher 262-662-2273 indoor@model-a-wis.com
Outdoor: Neil Besougloff 262-408-1479 outdoor@model-a-wis.com

Please remember:

- **To contact the club secretary if you have change of address, email address or phone number!**
- **To submit an article before and after your event.**
- **Deadline to submit articles and ads is the 15th of each month**
- **Check out www.model-a-wis.com for more pictures of club events.**

Please send all Wisconsin Chapter
Correspondence to:
WI Chapter MAFCA
PO Box 26006
Wauwatosa, WI 53226-0006

Volunteers for 2014:

Editor: Sue Quam 414-491-3260 wheelingthea@yahoo.com
Webmaster: Carl Doro 414-259-9692 webmaster@model-a-wis.com
Club Property: Al Downs 414-762-3731
Tool Keeper: Bill Storey 262-338-0452
Distribution: Marilyn Brojanac 262-252-4340 marilyn@rodrian.com
Distribution: Lorraine Schultz 262-251-3043
Club Photographer: Jo Lene Janssen, Peter Stauber and Steve Cloyd
Video Librarian: Ron Smith 262-628-3688
Club Historians: Bob & Karen Schmiechen 262-544-5005 robert_06@att.net
Fashion Articles: Diane Smith 262-628-3688 beadqueen09@gmail.com
Paid Advertising: Steve & Debbie Lewis 262-573-9821 steve-n-deb@charter.net
Swap Meet Committee: Dave Boucher, Bob & Kitty Schaefer, Sue Quam
Sunshine: Julie Larson 615-521-6811 jule64bug@gmail.com
Technical: Roger & Jan Olsen 262-554-7058 Jeff Bezotte 262-552-7715

For more information log on to www.model-a-wis.com

Advanced Timing Scheduled Events for 2014

May 18 May Tour - Steve & Ele Gapko and Roger & Jan Olsen

May 24-26 Memorial Day Overnighter Hostesses Marlene Stegner, Lorraine Schultz and Marilyn Brojanac

May 26 Memorial Day parade - Bob & Barb Sonnen

June 1 Sharon Model A Days - Bob & Sandi Davisson

June 14 June Tour - Stan & Pat Larson

July 4 Greendale Parade - Pat & Paul Piotrowski

July 4 Franklin Parade - **Host needed**

July 20 July Tour - Gene & Betsy Taurman

July 25-27 WI Rapids Reunion - Kerri Kultgen
WI Chapter Representative

August 24 Annual Picnic— Hosts Chris & Kate Rozman in Jackson, WI

Sept. 6 Luther Manor Car Show - Art & Sue Blazek

Sept. 13 Sept. Tour - Dave & Linda Huenink
Note this is a Saturday Tour

Sept. 20 Richfield Thresheree - Art & Sue Blazek

Oct. 12 Fall Foliage Tour - Marty & JoLene Janssen

Nov. 8 Veterans Day Parade - Neil Besougloff

Nov. 23 Waukesha Christmas Parade - Dave & Linda Huenink

Family Dentistry

Robert G. Saur, D.D.S., S.C.

12690 North Avenue

Brookfield, WI 53005

262-785-1499

Fax 262-785-0282



Senior Discount

November thru March all indoor meets are at St. Aloysius Church, 1414 S. 92nd St, West Allis, WI in the Gonzaga Hall, unless otherwise noted.

NEED HELP WITH YOUR "A"? QUESTIONS THAT YOU NEED ANSWERS TO??

Call our technical advisers :
Roger Olsen 262-554-7058
Mike Brojanac 262-252-4340

OUTDOOR MEET ADVISORY TEAM

For help in running an event call:
Jim Kummer 262-895-2897
Stan Larson 262-251-1655
Dave Boucher 262-662-2273

It is the intent of the Wisconsin Chapter to serve as a medium of exchange of ideas, information, and materials for admirers of the Model A Ford and Model A era fashions; to help those admirers become better acquainted; and to maintain among its members the spirit of good fellowship and sociality through sponsored activities including the use of the Model A and family participation.

Sunday, May 18, 2014

Plan to cruise in about noon and enjoy food and/or custard (byo= buy your own) before you start your Sunday afternoon tour in your Model A or modern iron at a 50s restaurant destination.

Gus's Drive In
3131 Main Street (Hwy ES)
East Troy, WI 53120

Winter snows SHOULD be a memory as we start our tour from Gus's at about 1:00 p.m. and cruise on Walworth and Racine County roads. Our tour will end at Camp MacLean in Burlington.

Hosts: Steve & Ele Gapko
Roger & Jan Olsen

Memorial Day Weekend Overnighter

May 24th, 25th, and 26th



Come join us for the Memorial Day weekend to Mineral Point. Tour the House on the Rock, Cave of the Mounds and other attractions.

Sunday night we will have a family style dinner/banquet. The cost is \$18.00 per person. Make checks payable to WI Chapter MAFCA and send to Marilyn Brojanac at N61 W15975 Beechwood Dr., Menomonee Falls, WI 53051.

Deadline to sign up for the banquet is May 1st.

We will be staying at the Quality Inn at 1345 Business Park Road, Mineral Point, WI Phone number is 608-987-4747 Cost is \$89.24 + tax total is \$96.83 Continental Breakfast is included. Rooms are held under Model A Club. The block of rooms will be held until May 1st.

We will meet at the McDonalds on HWY 164 and Capitol Drive at 8:00 a.m. We will leave at 8:30 a.m. sharp.

Marilyn Brojanac 262-252-4340
Lorraine Schultz 262-923-0651 (cell)
Marlene Stegner 262-227-3350 (cell)

Memorial Day Parade - May 26th

Once again the Wisconsin Chapter has been invited to participate on Monday, May 26 in downtown Milwaukee for the annual Memorial Day parade. The parade will gather at the corner of North 4th Street and Michigan Street at Carl Zeidler Park at 1:00 p.m.

The parade will begin promptly at 2:00 p.m. and proceed to Veterans Park on Milwaukee's lakefront.

The parade is to remember our veterans who gave their lives while in service to their country, so that we can enjoy the freedoms and securities we have today.

Let's make this a great tribute to our Veterans who have given so much of themselves for our country.

It is a day to "HONOR THE DECEASED BY SERVING THE LIVING".

Any questions? Call Bob Sonnen at 414-771-1692.



Mike's "A" Ford-able Parts
Mike Butcher 

124 Model A Drive, Maysville, GA 30558
email: mike@mikes-afordable.com - www.mikes-afordable.com
Fax: 706 652 2492 - Phone: 706 652 3866
1 888 TRY MIKE (879 6453)



Specialising in 1928 - 1931 Model A Ford Parts

MIKE BROJANAC (414) 464-7814
All Work Guaranteed

THE BRAKE SHOP
7665 W. APPLETON AVE
MILWAUKEE, WI 53222
Complete Auto Repairing



HDR Inc. - Heavy Duty Radiator Repair

N56 W13332 W. Silver Spring Road
Menomonee Falls, WI 53051

262-252-3920 FAX 262-252-3934
Bill Kowalefski



We Take Care of Leakers!
Specializing in Any and All Kinds of Radiator Repair

Milwaukee's Dry Stripping Headquarters

Specializing in:

- Industrial Blasting and Painting
- Automotive Paint Stripping
- Metal Furniture Stripping and Refinishing
- Do It Yourself Sandblasting Cabinets

262.781.8884
4907 North 124th Street
Butler, WI 53007

U-SPRAY
INCORPORATED

It's Model "A" Day Again In Sharon, WI Sunday, June 1st

THIS MARKS THE 18th YEAR OF THIS ANNUAL EVENT SPONSORED BY THE HISTORIC DOWNTOWN SHARON ASSOCIATION AND THE ROCK-FORD A's MODEL A CLUB (ROCKFORD, IL).

OFFICIAL HOURS: 9 a.m. TO 2 p.m.

FREE MAIN STREET PARKING FOR MODEL A's.
PIG ROAST WITH ALL THE TRIMMINGS, RUNNING BOARD LUNCHES,
1920s AND 30s JAZZ BAND, OLD FASHIONED ICE CREAM SOCIAL, DANCERS AND OTHER FREE ENTERTAINMENT, CRAFTERS AND THE EVER POPULAR MODEL A PARTS SWAP MEET.

Join with other chapter members for a great outing down to little Sharon, Wisconsin (pop. 1,600) to "rub hub caps" with 250 or more Model A's from all over the Midwest.

We'll stage for the approximately 50 mile "run to Sharon" at McDonalds, 3680 South Moorland Road at West National Avenue in New Berlin. WE WILL DEPART PROMPTLY AT 7:15 a.m. Main Street parking in Sharon fills up early. We should be arriving there by 9:00 a.m. Driving route instructions will be provided at the starting point.

Racine area and "out West" folks..... you are welcome to join with us about 7:45 a.m. at the McDonalds/Shell complex at Highway 20 and County ES on the northeast edge of East Troy. We can then continue on to Sharon as one group.

Don't own a Model A? Yours is "sick"? Modern cars are welcome. There's lots of free parking for you on the edge of "downtown Sharon".

Plan now! Save the date!

Your tour hosts - Bob and Sandi Davisson (414-543-2424)



Badger — SINCE 1969 —
METAL FINISHING & COATINGS INC.
Specializing in:

Custom Plating

Auto, Truck, Motorcycle and Marine parts
Show Chrome • Black, Gold, Brass & Nickel Chrome
All Colors Powder Coating & Anodizing • Clear Anodizing
Repair and Refinish any Truck, Car or SUV Bumpers and Rims
Stainless Steel, Aluminum, Diecast • Antiques • Marine

40 Years

5 Day Service Per Request • M-F 9 - 5 • Saturday By Appointment Only

4021 S. Kinnickinnic Ave. customercare@badgermetalfinishing.net (414) 482-4820
St. Francis, WI 53235 www.badgermetalfinishing.net Fax (414) 482-4822

MIKE'S REPAIR SERVICE

Model A Ford and Early Mustang
Parts and Service

Mike Quam, Owner
16130 Top-O-Hill Drive
New Berlin, WI 53151

Visa and Mastercard Accepted

414-491-3191

sonic05gt@yahoo.com

Saturday, June 14th Flag Day Tour

WI Chapter members, military, patriots, and friends, deck your "A" with American flags as we parade at the birth place of National Flag Day.

The theme for this year is the birth of the United States army on June 14th, 1775.

Waubeka is a small town that comes alive on Flag Day. We will be one of over 100 floats, bands, American Legion Posts, and VFW Posts to make up this festive parade.

Meet: at Menomonee Falls Village Park,
Pilgrim Rd. & County Line Rd.

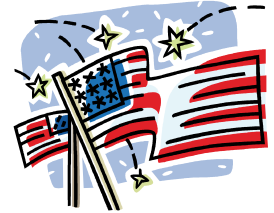
One mile north of I 45 & 41

Departure at 11:00 a.m.

Food is available at the Flag Day ceremony

Stan & Pat Larson would like to hear from you if can join us for this tour

Call: 262-251-1655



**HOST NEEDED FOR FRANKLIN JULY 4TH PARADE!
CONTACT OUTDOOR CHAIRMAN NEIL BESOUGLOFF AT
262-408-1479 TO VOLUNTEER.**

Couple of Notes from the Editor:

Last month we had an issue with about 8-10 of our members' newsletters being mailed to our PO box. Mistake of the post office. Somehow they read the address for mailing in new membership forms, rather than the label on top the page. So to avoid this ever happening again, the new membership form has been relocated to inside the newsletter on page 19.

Our club photographers can not be at every event to snap photos. So if you're there and have a camera or smart phone to capture some pictures, please do so and then email them to the club webmaster and myself, club editor. I'm always in need of pictures for the newsletter.


Please use wheelingthea@yahoo.com for all newsletter submissions; articles, pictures, ads, and should you find interesting articles you'd like to submit for filler. Please do not use it for mass email jokes.

Thank you and happy spring!!

Sue Quam
Editor

Closed
Sunday's

OPEN
Monday-
Saturday
10:30 am



3146 S. 27th St

Templin's Old Time Auto, LLC
Model A Ford Parts New, Used, & Rebuild
N5127 Meadow Lark Lane • Poynette, WI
We offer mechanical repairs - specializing in Model A's
3 miles west of exit 115: I-90/94 & County CS

Orders taken by phone or e-mail
(608) 772-3477 • (866) 795-1928

Call or e-mail to schedule service
(920) 285-8506 • (920) 648-5282

Open by appointment only



Jeff Templin, Owner

www.oldtimeauto.net • jeff@oldtimeauto.net

8,000 COWS IN ONE PLACE
Is it clean and humane? Come see Rosendale Dairy
The MILK SOURCE and Judge for yourself.



You have all seen a cow, a family farm with a small herd and even a dairy farm with several hundred cows. But have you seen a dairy farm that milks 8,000 cows per day? A farm so big they have to move silage with a bulldozer, the cows even ride a merry go round three times per day. Imagine the problem disposing of manure.

We'll come with us, and we'll see one near Rosendale, WI and see firsthand how they cope with these enormous challenges. Regardless we will have beautiful Wisconsin country ride.

Start point: Corfu Restaurant - 3025 Hubertus Rd., Hubertus, WI

Date: July 20, 2014

Departure Time: To be announced

Destination: Rosendale Farm THE MILK SOURCE

More info to follow concerning lunch, departure time and stops.

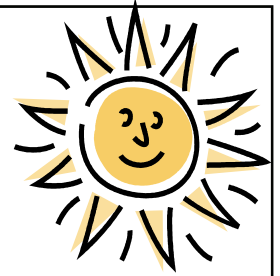


Sunshine Report.....

SUNSHINE: Marilyn Brojanic's mother passed away last month. Club member Jerry McGinnis passed away recently. Our deepest sympathies to the families.

Roy Feezor was in the hospital and Marty Jannsen had surgery and is home recovering.

Please notify Julie Larson with all sunshine needs. Call 615-521-6811 or email jule64bug@gmail.com



Welcome to New Members:

Jerome Golembiewski
400 N Broadway, Suite 601,
Milwaukee, WI 53202
414-531-7048
1929 Pickup truck
jlcoach@sbcglobal.net



INVITATION TO BLUESFEST

The Waukesha Rotary Club

Friday, August 8 and Saturday, August 9

You are invited to attend either day or both days. Two tickets will be provided free for each day you attend with your Model A. We would like you to arrive between 12:30 p.m. and 1:30 p.m. Please stay until 6:30 p.m., but you are welcome to stay until closing at 10:30 p.m. if you wish. The event is held at Nagawicka Park in Delafield located on Highway 83 about one mile North of I-94. For those who attended last year, parking will be in the same area. If this is your first visit ask Marty Jannsen about parking location.

Go to www.waukeshabluesfest.com for information about the event. The last couple years we had members attend on Friday and Saturday with a few attending both days. Contact Marty Jannsen, mjannsen@wi.rr.com or 262-696-4271 and let me know whether you will attend on Friday, Saturday or both days. The "A's" were a great attraction and the event committee thanks those who attended last year. The club members enjoyed the attention and questions from many visitors. A great attraction!!

Things you auto know....

1. Waukesha Preservation Alliance will be having the annual event which focuses on Waukesha's colorful past and are in need of period cars from 1900 to early 1950s which will help participants understand the role the automobile played in our past. The gathering will be held May 17th, close to the famous five points in downtown Waukesha. Meeting at 9:00 a.m. and the event continues until 3:00 p.m. As usual there will be donuts and orange juice to start the day and snacks throughout the afternoon. If you can attend you will not be expected to stay the entire day. There will be several tours and other events.
2. The Harry Miller Club will be holding the Vintage Indy Car event on July 11-12 at the famed Milwaukee Mile racetrack. The Miller event is one of the most impressive U.S. gatherings of Pre-W.W. II and Post- W.W. II Indy cars, Indy roadsters and laydowns. Gates open at 8:00 a.m. on Friday and Saturday with cars running the oval track from 10 a.m. to 4 p.m. each day.
3. 1st Congregational Church 3rd Annual Car Show. Saturday, August 9th, 2014. 10:30 a.m. to 4:00 p.m., 1st Congregational Church of Genesee, W306 S5075 Church St., Genesee, WI. \$8 donation per car, huge raffle @ 3:30 p.m. Live music, brats, hot dogs, sweet corn, and beverages, Dash plaques to the first 100 cars."
4. August 17th - Car show and 2 vintage baseball games, 1870's building tours. Shady setting at beautiful Richfield Historical Park on Pleasant Hill Road, ¼ mile east of state Hwy 164 in Richfield (Washington County). 1st & 2nd place People's Choice awards. Food & beverages. Show cars \$10.00 includes baseball games, activities for kids & building tours. Contact Daryl Grier 262 628-4221, dgrier@charter.net, or richfieldhistoricalsociety.org

Livin' the "A" Life...

Marty Jannsen, CPA



Collector of Practically Anything



JANNSEN + COMPANY

CPA & Accounting Services Human Resources
Information Technology Payroll Specialists
Wealth Management

262.513.9292 • 262.513.9282 fax

Marty.Jannsen@jannsen.com
www.jannsen.com

Mail Truck Model A

Providing all of your Model A needs



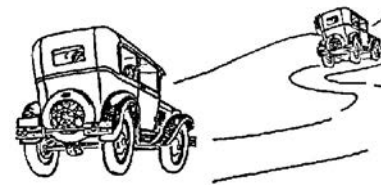
8509 S. Howell Ave

Oak Creek, Wi 53154

414-762-7288

Owner—Tony Baudo

'A' Trip Back to May 1995



Officers:

President – Dave Boucher
Vice President – Roger Olsen
Treasurer – Dennis Wacker
Secretary – Erwin Haban

Cookbook update – copies of "A" Road to Good Cooking', the official cookbook of the Wisconsin Chapter, compiled from recipes of our own members, is just about sold out. There are seven remaining copies.

Sunshine report – Jim Rusnak and June Rebarchik have been recently hospitalized. Club member George Schlesinger passed away recently.

The May 1995 newsletter also contained the 'Ladies Pages' by Burdella Miller. These pages included recipes for miniature dumplings and meat dumplings, Mother's Day poems, as well as helpful hints and a fashion page. Helpful hints include:

Store silver with a piece of aluminum foil to keep from tarnishing.
Remove perspiration stains from clothing by rubbing with a paste of baking soda and water before laundering.
To remove wallpaper, spray with a solution of 2/3 hot water and 1/3 liquid fabric softener, wait 20 minutes, then peel off paper.

May 11 – 7:00 p.m. planning meeting at the Brake Shop - for the June car show/swap meet. Hosts are Dave Boucher, Dave Dohmeyer, and Roger Olsen. The meet is to be held at the State Fair race track on June 25th. The car show is to include 15 show classes with the awarding of 45 trophies. In addition to the car show and swap meet there will be a car corral for the sale of cars.

May 13 – Bowl your 'A' off. Skill not required. Krueger Lanes in Menomonee Falls, \$10 per bowler includes shoes, beer, soda, and pizza. Hosts – Ed and Lorraine Schultz and Jim and Marlene Stegner.

May 20 – Story Hill open home display. Host – J.R. Manning. The residents of Story Hill are opening their homes to the public. The Milwaukee Chapter has been invited to display our vehicles in the driveways of homes of the same vintage.

May 21 – May Tour. Hosts – Jack and Marlene Grundman and Wes and Betty Campbell. Meet at 1:30 in the Mayfair Shopping Center. Our tour includes a visit to the Hoppe Homestead, an old working family dairy farm.

May 27 – 29, Memorial Day Weekend Family Get-together. Hosts are Ron and Diane Smith and Steve and Deb Lewis. Meeting point will be the Richfield Plaza Shopping Center at 9:00 a.m. We will be travelling to Shawano and staying at the Country Inn. All rooms have microwaves, and a mini-fridge. Facilities include continental breakfast, indoor pool, whirl pool, fitness center and game room. Get ready for a fun-filled weekend!

May 29 – Elm Grove Memorial Day parade. Seven plus A's are requested to participate. Line-up is at 10:00 a.m. at the Sunset Playhouse on Elm Grove Road.

Other noteworthy events of May 1995:

May 5 - Last basketball game at Boston Gardens (Magic beats Celtics)
May 12 - Dow Jones for 5th straight day of the week sets a new record (4430.59)
May 22 - Laverne & Shirley 20th anniversary reunion special, televised
May 27 - In Culpeper, Virginia, actor Christopher Reeve is paralyzed from the neck down after falling from his horse in a riding competition.

President's Note

Spring greetings....

Well it appears with the 70 degree weather and Easter behind us that spring is here. Our spring tour is coming up the 27th. I won't be able to make it, I'll be vending at spring Jefferson swap meet, I hope you all have a great time.

Please keep an eye on the calendar of events in the newsletter so you can try to schedule in some of our great outdoor tours this season, they are always a good fun filled time. The May tour hosted by the Olsens and Gapkos will start at Gus's Drive in, in East Troy. Good food and great ice cream there, try some if you can. The Memorial Day overnighter and Memorial Day parade are coming up May 24-26th, check the advanced timing for days and times.

There are two tours in June, the Model A Days in Sharon, WI and the Flag day tour which is Saturday, June 14. So far this year we have two tours that are on a Saturday. The other will be in September, so make sure to take note and mark your calendars.

A host is needed for the Franklin 4th of July parade, if interested please contact Neil Besougloff, our outdoor chairman.

Mike



CLASSIFIED ADS:

Classified ads, such as the ones seen here are free. To place your ad please contact the editor, Sue Quam at 414-491-3260 or by emailing your ad to: wheelingthea@yahoo.com

Ads run for one month unless notified to run them again. Ads are due by the 15th of the month.

WANTED: Ford dealer original advertising, Lic. toppers/postcards, promotions – misc. Call Dave Neuman 414-702-7170

FOR SALE: 1951 Buick Factory Service Manual asking \$25.00 and a 1977 Corvette Factory Service Manual asking \$30.00 Model 6 V generator with new windings bearings and near new cut out switch. Asking \$125.00 Call Gene Taurman at 262 242 0137

FOR SALE: 1930 Coupe, runs and drives good. Solid, nice interior. \$8,500.00 Call Roy at 414-687-9371

FOR SALE: Lower water inlet, headlight bar with seal beam head lights, Otwell manifold heater and intake manifold. Call Gino Wagner at 414-769-8331 if interested.

**Model A Ford Club of America – Wisconsin Chapter
Board Meeting April 12th, 2014**



Board Members Present: Mike Quam, Steve Lewis, Dave Huenink, Dave Boucher, Neil Besougloff, and Paul Piotrowski

Mike called the meeting to order at 7:00 p.m.

President – Mike - We received the newsletters from the reciprocating clubs. The board of directors decided to give \$100.00 to the national club to be used as a door prize and we sent a letter with the check.

Vice President – Steve – We have one new member who submitted their application to join the club – Jerome Golembiewski. A motion was made by Dave B. and seconded by Paul to accept this application for membership. The motion was put to a vote and it carried.

Secretary – Dave H. – There were no correction or changes to the minutes from the March 9th, 2014, board meeting. A motion was made by Steve and seconded by Neil to accept the minutes as written. The motion was put to a vote and it carried. There are two hundred and forty seven members who belong to our club as of this meeting.

Treasurer – Paul – A review of our finances for the month of March was done. A motion was made by Neil and seconded by Steve to accept the treasurer's report. The motion was put to a vote and it carried. Membership dues and new member dues were turned in. Several bills were turned in. A motion was made by Steve and seconded by Dave H. to accept the bills. The motion was put to a vote and it carried.

Outdoor – Neil – A review was held of the outside events for the year. Every event has a host except the Franklin 4th of July Parade. Dave H. asked if he could change the date of his event from September 14th, 2014 to September 13th, 2014. All Board members were in agreement.

Indoor – Dave B. – Dave B. reviewed the events for the next indoor season. November 9th will be the pizza party and a recap of the summer events, December will be the Christmas party but with no gift exchange, but other entertainment is in the planning stage. January will be the ice cream social and February and March will be a discussion on bee keeping and trivia.

Old Business – A club member inquired at the last indoor meet about his 25 year pin. It was determined this year is his 25th year so he will be receiving the pin at the end of 2014. Jan Olsen received a copy of the updated by-laws and Mike asked if all the board members could receive a copy. The secretary will send those out. The critical motions book was discussed as to whether it is being kept current. A discussion was held regarding our spring charity. The Fischer house was mentioned as one option. The board members were asked for other ideas to bring to next month's meeting. The decision was made to donate only \$500.00 this year.

New Business – None

Dave H. made a motion to adjourn meeting and was seconded by Paul. The motion was put to a vote and it carried. The meeting was adjourned at 8:04 p.m.

Respectfully submitted,

Dave Huenink

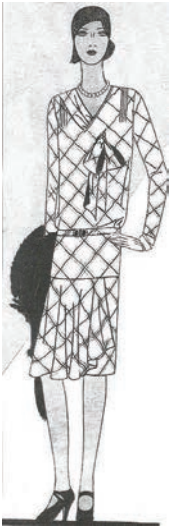
MAFCA – Wisconsin Chapter Secretary

All About Our Discovery of Four New Bows Delineator, June 1929

By Diane Smith

A Bow of Petal like ends

2685—A georgette collar and cuffs tie in knots on a princess frock of crepe. This is an adaptation of Patou's new silhouette, simplified and made wearable. The deeply scalloped, flared tier has the new very low position. The frock is one piece, with a draped waist-line.



A Bow that Slides through an Eyelet

2664—A scarf end becomes a bow that gives distinction and delightful softness to this frock of plaid flat crepe. The one-piece wrap-around skirt is attached at a very low line, for that chic, and flares at the front. The long body is tight below its belt and supple above it.

A Bow to Tie the Crushed Yokes

2662—The new dressmaking detail is interestingly found in the shoulder and waist-line yokes, outlined with fagoting and crushed bows. The one-piece skirt has gathered circular front with jagged hem-line. The frock is sleeveless but it may be made with long sleeves.



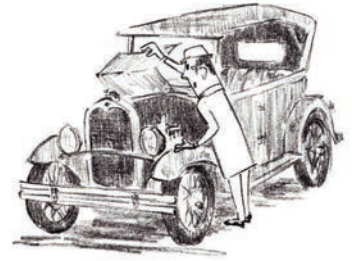
A Bow to Accent a Raised Waist-line

2670—The bow is tied rather high and so suggests a new position for the waist-line. The girdle is set in, the skirt is one-piece and wrap-around with a flare and a longer line at the left, and the cascading jabot is all in one with the loose right front.

The Rearview Mirror.....

March's Technical Seminar

Our evening began by discussing what we need to do to get our Model A ready for the touring season. All grease and oil fittings should be lubricated. Check the oil level in your crankcase as well as the water level in your radiator. Look carefully at your tires and the overall condition of your car.



Once again we reviewed the explanation as we showed the NuRex advanced timing system on the engine. The side cover was bolted on. We also installed the manifold and the exhaust system.

After hooking up all the wiring, we double checked the circuit's to make sure all were in working order. Then we hooked up the gas. Of course, the Model A started up right away!

We did have several non-believers in the crowd who were surprised at the quick start up. But, we knew the Model A engine would fire right up!

Jim Tishken demonstrated how to do all the timing and set up of the advanced spark as he has done this before on his "A". Jim was so confident our "A" chassis would start that he went in the other room before the "A" actually fired up! He was very happy when he heard the sound of the motor as it turned over.

We proved how simple and easy it is to time your engine with the new wrench at this seminar.

We would like to thank all who volunteered their services to get this chassis back to working order. Special thanks to Jim Tishken and Tony Baudo for all their extra help between seminars. Jim and Tony helped me make sure the chassis was ready for working on the seminar topic of the month.

Saturday, April 26th will be our last seminar for now . . . which we all hope will be on a beautiful sunny day.

Seminars will start again on Thursday, October 16, 2014. We will be learning how to install a top and upholstery in a Fordor.

Roger Olsen

Protect Your Model A from Theft

Perhaps you've spent years—even decades—searching for your dream car. Or maybe you took part in a long, hard restoration as you painstakingly fabricated parts, unearthed original components and nitpicked to get every inch of your Model A just right. Now that you have your Model A whole and gleaming in the garage, you want to keep it there...and not stolen by a thug.

But then some methods of theft protection deter from your Model A's appearance and authenticity. Fortunately, you do have options that don't involve drilling holes.

Methods of stopping auto theft can be divided into two basic categories: prevention and recovery. Going with one or more tactics from each category offers more comprehensive protection than just going with either prevention or recovery.

Time and attention are the biggest threats to burglars. Time refers to the minutes it takes a thief to get a vehicle moving. The longer it takes, the better the chance that someone will become aware of what's going on, and do something to stop the theft. Attention includes anything that will make you and others aware of what's taking place so the thief can be stopped.

Start With the Basics

Many of the preventive measures involve the same type of common sense approaches you would use with any valuable possession. They're pretty low-tech, too. For example: Keep your Model A locked, don't leave the keys in it (even in your locked garage), and never leave it unattended in public. If you do park and leave it in a public place, turn the wheels hard to the left and use the parking brake so it's harder to tow. Although these aren't impregnable defenses, they are simple and help protect your car or truck.

Physical barriers such as a block or lock for a wheel, brake pedal or steering wheel detract from your Model A's appearance at shows and are fairly easy for most thieves to foil. Although these barrier devices are inexpensive, they aren't all that effective except to prevent the least likely type of crime; a spontaneous theft committed by a passerby.

Car alarms attract attention to your vehicle, which may be useful when it's in your garage and you're at home, but false alarms have conditioned city dwellers to a point where they ignore or are annoyed by the sound of a car alarm. In other words, it's come to a point where they're largely ineffective. Like an alarm keeping a dog to alert you to intruders may be helpful if you're at home when the theft attempt happens.

Getting Some High Tech Help

While your car is at home, it's safest. But it's sensible to take a few precautions beyond the common sense advice given above. For instance, you can install motion sensing lights and alarms outside, along with security cameras. Most of these have become reasonably priced now.

Low-tech measures, such as bars and curtains on garage windows, a reinforced entry door, and an overhead door that cannot be manually opened from the outside.

If a thief makes it past all of those barriers, high-tech devices can prevent the car from starting. For a Model A it is difficult to install these devices and conceal them for show purposes. But if your Model A is restored to show conditions it would have the pop-out switch that Ford installed during production. This is an excellent preventive piece (if the key is not in the ignition).

One of the common ways of stealing older cars is to pop open the hood, run a wire from the battery to the ignition coil, and use a screw driver to start it. With the pop-out switch this is difficult to accomplish because when the switch is off it shorts the system.

Tips for Shows and Traveling

While at a car show, your best bet is to never leave your car unattended. Bring along someone to stay with the vehicle

so you can buy lunch or take care of other necessary matters, for example.

Car shows are like a supermarket for car thieves. People are telling everyone how great their cars are and what has been done to them.

Some proud owners have been known to display a plaque with their name and addresses on it near their vehicles. Don't do this. Instead, use only your first name and hometown or for further contact, an email address or cell phone number. Otherwise, it's too easy for a thief to track you down and steal your car.

When traveling on our Summer Tours we contact the local police in each town that we are spending the night. Let them know which hotel we are staying in and that there are several Model As in the parking lot, ask for a patrol check during the evenings. Most police departments will pass the information onto the patrol officer who is responsible for the area. They will add a drive through the parking lot during the evening. Sometimes they will come early enough to stop and visit.

Switching to Recovery Mode

If the truly unfortunate should occur and a Model A is stolen, it can suffer costly damage while in the hands of the thieves, leaving you with a potential insurance headache and additional restoration work even if it is returned to you.

However, since you can't prevent the most determined professional thief from overcoming your theft deterrents and taking your vehicle, a recovery method can be of great importance.

Lojack is among the best-known tracking systems. We wrote an article on Lojack in Volume 7 Issue 2. We have had the unit installed on project cars. The cost is relatively inexpensive for a collector car. Using radio frequency signal technology, thieves can't disappear as easily behind steel and concrete to hide stolen vehicles. Many law enforcement agencies like using the LoJack technology as an aid in tracking stolen cars. In addition, it doesn't draw off the battery and can be installed per your specifications so it doesn't interfere with our car's ability to participate in shows.

According to the company's website, lojack.com, "you have a 90% chance of recovering your stolen Model A truck or SUV---usually within 24 hours and often within just a few hours."

The company offers a money-back guarantee for the cost of LoJack for vehicles that are not returned. The cost is \$695, including installation, with no monthly fees.

The biggest problem with LoJack is that the service is not available nationwide. If you live in or are visiting one of the 22 states where it isn't offered, it won't work.

Or if you're near the border of one of those states, a thief would only need to drive a short distance to disappear.

As an alternative, adding another cell phone to your plan provides another option that's both affordable and easy. Many carriers charge only \$10 per month, plus taxes and fees for that extra phone connection. Charge the phone, turn the phone's GPS mode on, set the phone's ringer to silent, wire it into the battery and stow the phone out of sight in the car.

The caveats here are that the phone will drain the battery if the vehicle is not driven frequently enough, and if it's driven out of range after it's stolen, the GPS won't help. Furthermore, concrete or steel barriers may block the signal. Many cell companies offer virtually nationwide coverage, which is more far-reaching than LoJack. On the other hand, in states with LoJack coverage, law enforcement officers are already accustomed to tracking stolen cars with LoJack. They may be more hesitant to track your phone (and thus your vehicle) with a site like <http://www.instamapper.com> or <http://www.sat-gps-locate.com>.

Seek Assistance

Should someone steal your Model A, report it immediately to the police. But in the final analysis, I'm sure we'll all agree that it's far better to try and ensure that your Model A stays right where it belongs...and doesn't take any unfortunate, unscheduled trips.

Invitation To Join Model A Ford Club of America

New Membership

Name _____
Spouse's Name _____
Address _____
City _____
State _____ Zip _____
Country _____ Telephone _____
Permission to publish my telephone number in future Membership Rosters? Yes: ____ No: ____

Gift Membership

Name _____
Spouse's Name _____
Address _____
City _____
State _____ Zip _____
Country _____ Telephone _____
Permission to publish my telephone number in future Membership Rosters? Yes: ____ No: ____

Return this form and payment to:
MAFCA
250 South Cypress Street • La Habra, CA 90631-5515

Source: MAFCA Web Site
2009 Membership Form

~ Membership Benefits ~

The Restorer magazine • Technical Support • Local Chapters • National Meets • Era Fashion Guidelines • "How To Restore" Series • Judging Standards and Restoration Guidelines

Dues per year are
U.S. Membership - \$40
International Membership - \$50
International First Class - \$56
Make checks or money orders payable to
MAFCA
U.S. Funds Only

For Credit Card Orders ~		Visa / MasterCard (circle one)									
Card Number:	<input type="text"/>										
Exp. Date:	<input type="text"/>										
Signature:	<input type="text"/>										
_____ Membership Only						_____ Membership + Initiation Package					

**Optional Initiation Package
For New Members Only**
1 - Back issue of *The Restorer*
1 - MAFCA Lapel Pin
1 - MAFCA Decal
1 - Name Badge
Only \$10 extra



New Membership Application

Name _____ Date _____

Address _____

City _____ State _____ Zip _____

Phone(____) _____ E-Mail _____

Model A's _____

Send my newsletter via email _____ or US MAIL _____

Dues for 2014 for the Wisconsin Chapter, MAFCA:
Receiving the newsletter & roster via the internet is \$20.00
To receive the newsletter and the roster via the US Mail (first class)
the dues are \$30.00 New member applications are approved at the
monthly Board of Directors meeting, which is the second
Saturday of the month. You will receive a welcome letter upon
approval. Dues include membership only in the
Wis. Chapter MAFCA until the end of the current calendar year.

Send To:
Steve Lewis
Vice President/New Member Chairperson
Wisconsin Chapter, MAFCA
PO Box 26006
Wauwatosa, WI 53226-0006

**** 2014 ****

Wheeling the "A"

Wisconsin Chapter MAFCA
Marilyn Brojanac, Distribution
N61 W15975 Beechwood Dr.
Menomonee Falls. WI 53051

Address Service Requested

MAIL TO:

Ford does it again.... From Foxnews.com

Ford is taking the all-new 2015 Mustang to the top...of the Empire State Building.

To celebrate the model's 50th anniversary on April 17th, the automaker is recreating a stunt it pulled for the original Mustang's debut in 1964: parking on the observation deck of New York's iconic skyscraper.

But just like half a century ago, the building is too tall to haul the car up on a crane, its spire too wide to allow a helicopter close enough, and the elevators too small to fit a car on them.

At least in one piece.

So, as before, the Mustang's engineers have taken on the task of cutting the Mustang into sections that can fit on the elevator cars, but easily be reassembled within the six-hour window available while the observation deck is closed to the public.

Last time around, with a much smaller car to deal with, the team managed to slice the convertible 'Stang into just three sections plus the windshield, so the bar is set.

The new car will be on display high above Manhattan April 16th-17th, coinciding with the start of the New York International Auto show. But exactly what version of the Mustang will be up there is still secret.

Rumor has it that Ford will be unveiling a limited edition 50th Anniversary Mustang at the show with retro design features and white paint.

The same color as the car that made the trip to the top 50 years ago.

