

WHEELING THE A



The official newsletter of the Wisconsin Chapter
Model A Ford Club of America

Volume LIV Issue 8




PO Box 26006 Wauwatosa, WI 53226-0006

August 2013



FOR MORE INFORMATION LOG ON TO WWW.MODEL-A-WIS.COM

Board of Directors 2013:

<p>President: : Dave Boucher 262-662-2273 president@model-a-wis.com</p>	
<p>Vice President & Sunshine Steve Lewis 262-573-9821 vicepresident@model-a-wis.com</p>	
<p>Secretary: Dave Huenink 262-378-4216 secretary@model-a-wis.com</p>	
<p>Treasurer: Paul Piotrowski 262-513-1089 treasurer@model-a-wis.com</p>	
<p>Outdoor: Mike Clinnin 414-294-0238 outdoor@model-a-wis.com</p>	
<p>Indoor: Mike Yokofich 414-651-1243 indoor@model-a-wis.com</p>	
<p>Technical Meets & Awards: Neil Besougloff 262-408-1479 techmeet@model-a-wis.com</p>	

Please send all Wisconsin Chapter
Correspondence to:
WI Chapter MAFCA
PO Box 26006
Wauwatosa, WI 53226-0006

For more information log on to www.model-a-wis.com

It is the intent of the Wisconsin Chapter to serve as a medium of exchange of ideas, information, and materials for admirers of the Model A Ford and Model A era fashions; to help those admirers become better acquainted; and to maintain among its members the spirit of good fellowship and sociality through sponsored activities including the use of the Model A and family participation.

Volunteers for 2013:

<p>Editor: Sue Quam 414-491-3260 wheelingthea@yahoo.com</p>
<p>Webmaster: Carl Doro 414-259-9692 webmaster@model-a-wis.com</p>
<p>Club Property: Al Downs 414-762-3731</p>
<p>Tool Keeper: Bill Storey 262-338-0452</p>
<p>Distribution: Marilyn Brojanac 262-252-4340 marilyn@rodrian.com</p>
<p>Distribution: Lorraine Schultz 262-251-3043</p>
<p>Club Photographer: Jo Lene Janssen, Peter Stauber and Steve Cloyd</p>
<p>Video Librarian: Ron Smith Home-262-628-3688</p>
<p>Club Historians: Art & Sue Blazek 262-538-4474 ablazek@wi.rr.com</p>
<p>Fashion Articles: Diane Smith 262-628-3688 beadqueen09@gmail.com</p>
<p>Paid Advertising: Steve & Debbie Lewis 262-573-9821 steve-n-deb@charter.net</p>
<p>Swap Meet Committee: Dave Boucher, Bob & Kitty Schaefer, Sue Quam</p>

**Please remember deadline to submit
articles and ads is the 15th of each
month. Submit them to:
wheelingthea@yahoo.com**

ADVANCED TIMING SCHEDULED EVENTS FOR 2013

- Aug. 9-10** Waukesha Rotary Bluesfest - Hosts: Dave Huenink & Art Blazek
- Aug. 11** Annual Club Picnic - Hosts Dave & Donna Boucher. "You **MUST** register if you want to eat!"
- Sept. 3-8** MAFCA Northwest Regional Meet Bend, OR, Hosted by High Desert A's
- Sept. 7** Luther Manor Car Show - Hosts Art & Sue Blazek
- Sept. 8** Yerke Observatory Tour - Hosts Dave & Linda Huenink
- Sept. 14** Mitchell Manor Car Show - Hosts Dave & Linda Huenink (rain date Sept. 21)
- Sept. 21** Richfield Thresheree - Host Pete Stauber
- Oct. 13** Fall Tour & Chili Dump - The Bouchers and The Schmiechens
- Oct. 21** Technical Seminar - Leaf Springs 7:00 p.m. At Mail Truck Model A Parts, 8509 S. Howell Ave.,
- Nov. 9** Veterans Parade - Host Neil Besouloff
- Nov. 21** Technical Seminar - Head Gaskets 7:00 p.m. At Mail Truck Model A Parts, 8509 S. Howell Ave., Oak Creek
- Nov. 24** Waukesha Christmas Parade - Hosts Dave & Linda Huenink
- Feb. 23, 2014** Club Swap Meet - Washington Cty. Fair Grounds

Free Car Wash With Oil Change



Tires - Alignments - Brakes - State Emissions Testing
Coolant and Transmission fluid change
FREE SELF SERVICE VACUUMS

Wash: 262-250-9020

Lube: 262-250-9021

Main Street - Menomonee Falls

www.rfwashnlube.com

Templin's Old Time Auto, LLC

Model A Ford Parts New, Used, & Rebuild
 1022 Mulberry St./County A • Lake Mills, WI

We offer mechanical repairs - specializing in Model A's

Monday - Thursday
 4:30 pm - 7:00 pm

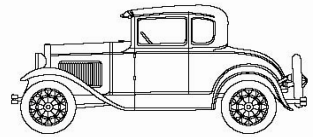
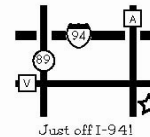
Orders can be faxed or e-mailed in at anytime

(920) 648-5282 - Phone • (920) 648-5920 - Fax
 jeff@oldtimeauto.net

Saturday
 9:00 am - 4:00 pm

Friday - Closed
 By Appointment Only

Also Closed on
 Sundays, Holidays
 and Swap Meets



www.oldtimeauto.net • Jeff Templin, Owner



Badger
 METAL FINISHING & COATINGS INC.



Specializing in:

Custom Plating



Auto, Truck, Motorcycle and Marine parts
 Show Chrome • Black, Gold, Brass & Nickel Chrome
 All Colors Powder Coating & Anodizing • Clear Anodizing
 Repair and Refinish any Truck, Car or SUV Bumpers and Rims
 Stainless Steel, Aluminum, Diecast • Antiques • Marine

5 Day Service Per Request • M-F 9 - 5 • Saturday By Appointment Only

4021 S. Kinnickinnic Ave. customercare@badgermetalfinishing.net (414) 482-4820
 St. Francis, WI 53235 www.badgermetalfinishing.net Fax (414) 482-4822

Milwaukee's Dry Stripping Headquarters

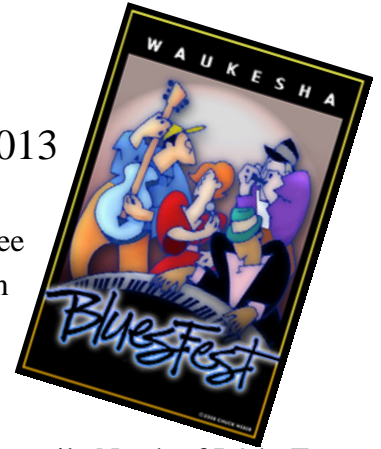
Specializing in:

- Industrial Blasting and Painting
- Automotive Paint Stripping
- Metal Furniture Stripping and Refinishing
- Do It Yourself Sandblasting Cabinets

262.781.8884
 4907 North 124th Street
 Butler, WI 53007

U-SPRAY
 INCORPORATED

INVITATION TO BLUESFEST
The Waukesha Rotary Club
Friday, August 9 & Saturday, August 10, 2013



You are invited to attend either day or both days. Two tickets will be provided free for each day you attend with your Model A. We would like you to arrive between 12:30 p.m. and 1:30 p.m. Please stay until 6:30 p.m., but you are welcome to stay until closing at 10:30 p.m.

The event is held at Nagawicka Park in Delafield located on Highway 83 about one mile North of I-94. For those who attended last year, parking will be in the same area. If this is your first visit ask Art or Dave about parking location.

Go to www.waukeshabluesfest.com for information about the event.

We had members attend on Friday and Saturday with a few attending both days.

Contact **Art Blazek** if you wish to attend on **Friday**. 262-538-4474 ablazek@wi.rr.com

Contact **Dave Huenink** if you wish to attend on **Saturday**. 262-378-4216 oldfordcoupe@wi.rr.com

The "A's" were a great attraction and the event committee thanks those who attended last year. Club members enjoyed the attention and questions from many visitors.

BRASSWORKS
Made in the U.S.A.

Early Ford Radiator Reproductions
 Radiator Restorations
 Custom Built Radiators

28-29
 30-31
 32
 33-34
 35
 36
 37-39
 40-41

Radiator Cores
 Flat Tube
 Round tube
 Honeycomb
 Cartridge

Heater Cores
 Fan Shrouds

Paso Robles, CA

www.thebrassworks.net 805.239.2501

MIKE BROJANAC (414) 464-7814
 All Work Guaranteed

THE BRAKE SHOP
 7665 W. APPLETON AVE
 MILWAUKEE, WI 53222
 Complete Auto Repairing

MIKE'S REPAIR SERVICE
 Model A Ford and Early Mustang
 Parts and Service

Mike Quam, Owner
 16130 Top-O-Hill Drive
 New Berlin, WI 53151

Visa and Mastercard Accepted

414-491-3191 sonic05gt@yahoo.com

Mike's "A" Ford-able Parts

Mike Butcher

124 Model A Drive, Maysville, GA 30558
 email: mike@mikes-afordable.com - www.mikes-afordable.com
 Fax: 706 652 2492 - Phone: 706 652 3866
 1 888 TRY MIKE (879 6453)

Specialising in 1928 - 1931 Model A Ford Parts



PICNIC



Annual Picnic
Sunday August 11th 2013
Malone Park
3953 S. Casper Dr.
New Berlin, WI
Lunch at Noon

This year's picnic is going to be catered so **you must register.** The picnic is free to all current members and their spouse/guest and dependent children.

All non-members will be charged a guest fee of \$14.00 per adult and \$7.00 per child 12 years and under. All guest fees must be paid in advance.

Everyone attending the picnic must register for accurate numbers for the caterer. The caterer will not provide beer so, if you wish BYO. We will have soda, water, lemonade, etc.

Remember you and your guests must be registered **by August 1st, 2013** to attend.

Registration by August 1st, 2013

Name _____

Number of Members Adult _____ Children _____

Guests Adult \$14.00ea. _____ Children \$7.00ea. _____

Make Checks Payable to Wisconsin Chapter MAFCA

Mail to: Dave & Donna Boucher
S77 W22620 Sunset Glen Dr.
Big Bend, WI 53103
Questions call: 262-662-2273

*Remember members and any guests must be registered to attend.

SEPTEMBER TOUR

Come and join Dave and Linda Huenink on a guided tour of the Yerke Observatory in Williams Bay, WI on Sunday, September 8, 2013. We will be shown the workings of the observatory and also learn the history behind it.

This astronomical observatory is operated by the University of Chicago and was constructed in 1897 - that's 116 years ago. It is the birthplace of modern astrophysics and has the largest refracting telescope in the world and it's in our back yard here in Wisconsin.

We will be able to park on the grass with the observatory in the back ground and take pictures of our Model A's as a group.

We will meet at McDonalds at Hwy 164 and National at 11:15 a.m. and leave promptly at 11:30 a.m. We will take a leisurely drive down to Williams Bay to the observatory for our 1:00 p.m. tour. The tour will last one hour at which point we will leave and stop for a bite to eat. If you have any questions please feel free to give Dave or Linda a call at 262-378-4216.




Mitchell Manor Car Show on Saturday

September 14th from 12:00 p.m. to 4:00 p.m.

The residents always enjoy seeing our cars and reminiscing about the Model A's they have ridden in. The residents will be voting for the best looking car and three trophies will be awarded. Mitchell Manor is located at **5301 W. Lincoln Road, West Allis, Wisconsin**. Should you have any questions please feel free to call Dave at 262-378-4216.

Your hosts: Dave Huenink with Morgan the wonder dog.

OPEN
Monday-Saturday
10:30 am



Closed
Sunday's

3146 S. 27th St

HDR Inc. - Heavy Duty Radiator Repair

N56 W13332 W. Silver Spring Road
Menomonee Falls, WI 53051

262-252-3920 FAX 262-252-3934

Bill Kowalefski



We Take Care of Leakers!
Specializing in Any and All Kinds of Radiator Repair

The Caledonia Historical Society is hosting its annual celebration on Saturday, Sept. 14th and Sunday Sept. 15th from 10:00 a.m.- 4:00 p.m. Last year there were six Model A's in attendance. They are extending the welcome to anyone who can join the celebration. The park is located on the corner of 5 Mile Rd. and Hwy 38. The address is 7330 W. 5 Mile Rd. Franksville, WI 53126.

Steven Cloyd

SAVE THE DATE - SEPTEMBER 21, 2013

15th ANNUAL RICHFIELD HISTORICAL SOCIETY THRESHEREE

See steam-driven threshing, log cutting demonstrations, horse plowing techniques, antique autos, engine exhibits, and displays of skills from long ago. Good food, lively music, and mill tours.

We will meet at the Friess Lake School on the corner of Hwy 164 and Hwy 167 in Richfield at 8:45 a.m., leaving the parking lot promptly at 9:00 a.m.

Questions call Peter Stauber 414-352-0438 or Mary Ciocarelli 262-334-3766

Fun things you Auto Know.....

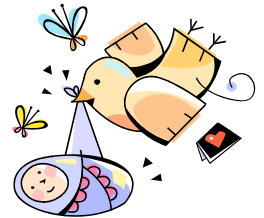
Saturday Car Show at SHADY LANE GREENHOUSE on September, 28th 2013. This is an open invitation for anyone who wants to attend. It will show case the largest G scale Model train in the Midwest. The layout is housed in a 95' by 45' greenhouse. It's big and worth bringing your kids or grandkids. There will be food you can purchase or BYO. Show is from 10 a.m. to 3 p.m. Location 1 mile west of Pilgrim Road on Good Hope Road. Free Admission.

This is under construction with more information in the next newsletter.

Visit there web site info@shadylanegreenhouse.com

SUNSHINE.....

Congratulations to Chuck and Kris Morgan on becoming first-time Grandparents. Their son Tim and daughter-in-law Nicole welcomed Camden Charles Morgan into the world on June 18th at 2:59 p.m. Camden weighed 9 lbs. 14 oz. and was 22 1/2 inches long. He is beautiful and everyone is doing fine.



If you have sunshine to report, please contact Steve Lewis 262-573-9821 or by emailing:



The next big event at the Model A Museum is September 20-21 2013. We are moving to the next phase of the museum where we will be holding an annual meet at The Gilmore complex. This year we will have some seminars and a banquet on Saturday night. Attached is the registration form for the meet. It is also available at the MAFFI.org website to download for your member's convenience.

The MAFFI board is looking forward to seeing many of you in September. This is such a great location and time of year to come out with your Model A. For full information and to view/print out the registration form, follow the link on the home page at www.maffi.org

The Model A Ford Foundation Trustees

Welcome to New Members:

John and Linda Maltby, 149 W. Washington St., Burlington, WI 53105
James Eichholz, 2460 Springdale Rd., Brookfield, WI 53045
Bruce and Elizabeth Duncan, 8000 Bonniwell Rd., Mequon, WI 53097



Mail Truck Model A

Providing all of your Model A needs



8509 S. Howell Ave
Oak Creek, Wi 53154
414-762-7288

Owner—Tony Baudo

We now offer shipping and Model A Service

Livin' the "A" Life...

Marty Jannsen, CPA



Collector of **P**ractically **A**nthing



JANNSEN + COMPANY

CPA & Accounting Services Human Resources
Information Technology Payroll Specialists
Wealth Management

262.513.9292 • 262.513.9282 fax

Marty.Jannsen@jannsen.com
www.jannsen.com

“A” ...line from the Prez

This month’s activities include Bluesfest at Nagawicka Park in Delafield and our annual club picnic at Malone Park in New Berlin. These are two enjoyable things to do with your fellow club members.



I had an interesting thing happen at this year’s Sharon event. There was a gentleman handing out flyers to locate a restored 1931 Slant Sedan. I had just received a newsletter from the Meadowlark A’s in Omaha, Nebraska and there was a slant listed for sale. I called Al, the gentleman looking for the car and gave him the phone number of the seller. It ended up being just what he was looking for and he bought it. It goes to show, if you need a part or car, start asking people. You never know you may just end up with what you need.

This last month Donna and I had the opportunity to drive to Michigan and see the new Model A Museum. It is located in Hickory Corners, Michigan on the grounds of the Gilmore Car Museum. MAFFI sure did a great job on picking a location and design for this museum. The building looks like a 1920s Ford dealership. You enter on a walkway of brick with donors names inscribed. We were able to locate our brick along with other club member’s bricks and our chapter brick. Once inside there were displays of cars, era fashions, cut away models and a parts department. There is even the motor with serial number one. The building is located across the street from the Franklin Museum and will be kitty corner from the future Lincoln Museum and next to the future Cadillac/LaSalle Museum.



I am proud that our Chapter agreed to help sponsor this museum. Inside there is a plaque listing our chapter as a donor in the silver category.

If you’re in the area just north of Kalamazoo, Michigan stop in and see what a great job MAFFI has done. MAFFI members are admitted free to the entire Gilmore collection. Check out the pictures on the club web site.

That’s about it for now. Hoping to see you at one of next club events.

Dave Boucher
President



MAFCA—WI Chapter Board Meeting July 20, 2013

Board Members Present: Dave Boucher, Mike Clinnin, Dave Huenink, Steve Lewis, Paul Piotrowski, Mike Yokofich. Those not present Neil Besougloff.

Dave Boucher called the meeting to order at 7:00 p.m.

President – Dave B. – August meeting date was listed in the agenda as August 10th, 2013. The correct date is August 3rd. Received a letter from MAFFI asking for a donation. We have already donated. Carl Doro sent an email regarding the club calendar on the web site and the lack of information regarding the club events. Dave B. will talk to Gene Taurman about keeping it up and what he wants to do moving forward. Dave B. and Bob Schaefer met with the Olsens to get all of the swap meet material. Sue Quam has all the information off the old computer onto the new laptop. Sue later contacted Dave B. and wondered if she could dispose of the old club computer and other items which were no longer used for the swap meet. Computer is outdated and not working efficiently. It was decided to dispose of the computer, monitor, printer and ink/hand stamps.

Vice President/New Membership/National Correspondent and Sunshine – Steve Lewis – Three member applications to join the club – Jim Eichholz from Brookfield, Bruce and Elizabeth Duncan from Mequon, and John and Linda Maltby from Burlington. A motion was made by Dave B. and seconded by Paul to accept their applications. Wally Kaufman is back at home and doing well. Chuck and Chris Morgan are new first time grandparents. Discussion on the results of the new printing company which printed the July copy of “Wheeling”. It was determined the results were favorable and we will continue to use them going forward. The quality was wonderful and the cost is considerably less.

Secretary – Dave H. – There were no corrections or changes to the minutes from the June board of directors meeting. A motion was made by Mike Y. and seconded by Paul to accept the minutes as written. To date, we have two hundred and sixty-three members.

Treasurer – Paul P. – A report of the revenue and expenses from last month was given by Paul. A motion was made by Mike Y and seconded by Dave H. to accept the treasurer’s report. New member dues were turned in and money collected for the picnic. Dave B. turned in a bill. A motion was made by Mike Y. and seconded by Mike C. to accept the bills.

Outdoor – Mike C. – All the 4th of July parades went well. To date, seventy people have signed up for the club picnic. The 2014 Memorial Day overnigher will be hosted by Brojanics, Stegners and Schultzs.

Indoor – Mike Y.- Mike asked St. Aloysius if we could get a two year contract for our meeting hall and a storage room. Mike is working on both. Mike and Sandy Y. are going to host the pizza party in November. A suggestion was made to Mike Y. to call some of the membership for new ideas for the indoor events. He will follow up on this.

Technical/Awards – Neil B. – The topics for the October technical meet will be leaf springs and the topic in November will be changing a head gasket.

Old Business –A discussion was held regarding the power point projector. Mike Y. made a motion and Dave H. seconded the motion to purchase the projector. The motion carried. A discussion was held regarding the screen. Mike Y. made a motion and Dave B. seconded the motion to purchase a screen. The motion carried. Sue Quam & Dave Boucher met to discuss the February swap meet flyer and also created it. The BOD discussed how to increase our attendance at the swap meet possibly through some different type of advertising. We have approximately 2000 people who attend yearly. Brought to our attention was that at some of the larger swap meets in the area, vendor participation is down. To date, this trend has not affected our club swap meet. No one has stepped up to represent our club at the Rapids Reunion. It is our turn to host the event in 2015. Dave B. is going to talk to Tony Sillman about no one from our club offering to represent us and how he wants to handle it.

New Business – Dave B. asked the board members to start thinking about our fall charity donation. A flier was passed around regarding the Vintage Baseball and classic car show August 18th.

Dave H. made a motion to adjourn the meeting and seconded by Steve. The motion was put to a vote and it carried. The meeting was adjourned at 9:05 p.m.

Respectfully submitted,
Dave Huenink
MAFCA– Wisconsin Chapter Secretary

Reminiscing with the Historian

This article first appeared in the July, 1987 issue of Wheeling the A.



NOTES

FROM THE EDITORS!

Do you enjoy the old Burma-Shave verses, or is it just me? I love them. The best part of driving the five or more hours up to my Grandmother's cottage as a child was watching for another set of Burma-Shave signs.

The first sign appeared in the fall of 1925 and, by the next year, they were along two-lane highways in Minnesota, Wisconsin and Iowa. By 1929 they were from coast to coast and lasted until 1960 when freeways and higher speed limits forced their removal. The five-line verses boosted Burma-Shave into nationwide success, expanding all through the most prolonged business depression our country has ever known. The signs were virtually the only advertising the company used. Throughout the years, more than 600 different jingles were used and about half of these were public service messages directed toward the motorist.

Memories are worth millions and Burms-Shave made fond memories for a whole generation of verse watchers. When I'm feeling like the world is moving too fast for me, I pull out my book, Verse By The Side of the Road, read a few pages of verses, relive some fond memories and slow down to how it was in the good old Burma-Shave days.

Historians' note:

Check out the website burma-shave.org, which shares all the Burma-Shave signs throughout the history of this unique advertising technique. Here are a few of the jingles from the Model A years.

Submitted by Art and Sue Blazek

<u>1928</u>	<u>1929</u>	<u>1930</u>	<u>1931</u>
One of the great discoveries	Every shaver	Does your husband	Golfers!
Good by! Shaving brush	Now can snore	Misbehave	If fewer strokes
Old men look younger	Six more minutes	Grunt and grumble	Are what you crave
Young men look handsomer	Than before	Rant and rave	You're out of the rough
Very fine for the skin	By using	Shoot the brute some	With
Burma-Shave	Burma-Shave	Burma-Shave	Burma-Shave

ERA FASHIONS by Diane Smith

Cotton Takes Its Place With Silk In New Sports Fashions

Pictorial review July 1931



Printed frock—A dress that you can make in a few hours and wear all summer. The cap sleeves are cut in one with the frock.

Red frock—A clever use of diagonals—and a mesh yoke with the new high neckline.

Jacket—You can't get along without a soft woolen jacket this summer. This one is collarless and open in front to show off a scarf.

Green frock—Yellow patent-leather accessories supply the third color.

Jumper Frock—The new cotton tweeds are tremendously important for sports. Smart waistcoat lines give this jumper-frock tremendous swagger.

Tucked sleeves and a narrow collar are charming details on a blouse of sheer cotton or a novelty mesh material.

Check your Model A regularly for metal fatigue

All old vehicles in regular use are subjected to some kind of metal fatigue sooner or later, and our 80-plus-year-old Model A's are no exception.

According to Wikipedia, metal fatigue is a “progressive and localized structural damage that occurs when a material is subjected to cyclic loadings.” Parts that flex back and forth, like springs and dozens of other parts in our Model A's, some day will fail due to metal fatigue.

In 1839 Jean Victor Poncelet of France was the first reported person to study metal fatigue. Poncelet is credited with using the word “fatigue” to describe a metal component that breaks down over time.

Metal fatigue can cause any metal – brass, copper, steel, aluminum – to fail. Usually moving, flexing, or vibrating parts are especially subject to metal fatigue. Think of a piece of thin wire that gets bent back and forth dozens of times. Eventually it will break.

Here are five examples of metal-fatigue failure that can occur on a Model A.

Original fan: The original folded metal Model A fan is prone to cracking. The blades flex slightly as the fan spins, a crack opens, and the crack worsens until the metal fails, sometimes with catastrophic results. Broken blades have damaged radiators and even cut through the sheet metal of Model A hoods.

Fuel line: The fuel line is fastened to the fuel tank at one end and the carburetor at the other. Model A engines vibrate somewhat independently of the rest of the car – including the gas tank. During normal driving, the metal fuel line is flexed differently at each end, and ultimately will be the victim of metal fatigue, usually at one of the connection points.

Leaf spring: No other part of our Model A's flexes quite as much by design as the front and rear leaf springs. The photo shows a leaf from a front spring that broke clean through from metal fatigue while I was driving.

Brake-rod return spring: Last spring, while inspecting the underside of my car, I found that a rear brake-rod return spring had broken into two pieces. Just like a leaf spring, the brake-rod return spring is meant to flex, but on a much lighter scale. After decades of use the metal bracket broke into two pieces from fatigue.

Even fenders, which aren't supposed to move, can be victims of metal fatigue. I traced a squeak in my car to an attachment tab for the left front fender. After years of vibration and flexing, the tab broke. The broken metal edges squeaked when the car moved.

What can you do to stop metal fatigue? Not much, but don't worry, your car is not in imminent danger of breaking apart. Regularly inspect your Model A from above and below, tighten loose fittings, and look for hair-line cracks in metal parts that are prone to flexing. You may catch a part before it breaks completely. – *Neil Besougloff, club technical chairman*

Pictures on next page.....

Pictures from technical article on previous page.



Left: At left is a front suspension leaf that snapped in half on one side of the center bolt. To the right is a brake-rod return spring that broke after years of flexing.



Above: A close-up photo of the brake-rod return spring shows that the metal failed evenly around the bowl-shaped opening for a rear brake rod.



Left: Here's a close-up photo of the broken spring leaf. Most of the brown-textured material is grease used to lubricate the leaf.

Invitation To Join Model A Ford Club of America

New Membership

Name _____
 Spouse's Name _____
 Address _____
 City _____
 State _____ Zip _____
 Country _____ Telephone _____
 Permission to publish my telephone number in future Membership Rosters? Yes: ____ No: ____

Gift Membership

Name _____
 Spouse's Name _____
 Address _____
 City _____
 State _____ Zip _____
 Country _____ Telephone _____
 Permission to publish my telephone number in future Membership Rosters? Yes: ____ No: ____

Return this form and payment to:
 MAFCA
 250 South Cypress Street • La Habra, CA 90631-5515

~ Membership Benefits ~

The Restorer magazine • Technical Support • Local Chapters • National Meets • Era Fashion Guidelines • "How To Restore" Series • Judging Standards and Restoration Guidelines

Dues per year are
 U.S. Membership - \$40
 International Membership - \$50
 International First Class - \$56
 Make checks or money orders payable to
 MAFCA
 U.S. Funds Only

For Credit Card Orders ~ Visa / MasterCard (circle one)

Card Number:

Exp. Date: _____

Signature: _____

Membership Only Membership + Initiation Package

**Optional Initiation Package
 For New Members Only**
 1 - Back issue of *The Restorer*
 1 - MAFCA Lapel Pin
 1 - MAFCA Decal
 1 - Name Badge
 Only \$10 extra



Source: MAFCA Web Site
 2009 Membership Form

Best of Show for Club Member

Wisconsin Chapter member Bill Dickinson, owner of a 1928 Ford Model A, garnered top honors at the 31st annual "Wisconsin Early Mustangs All Ford Show & Swap" on Sunday, May 19th.

WI Early Mustangs car club promoted the show as an "All Ford Show", it is hosted for Ford owners with vehicles produced from 1900 until today. It was this magnet that was attracted me.

Since 1952, I have owned the 1928 Ford Model A, and it was this vehicle and the accompanying story that won the attention of Eric Ewald and his fellow judges in the "Sponsors Choice" (Best of Show) category.

My job in 1952, at the age of 15, was to go to the garage at my grandfather's house, during visits, rain or shine, winter or summer, and start the 1928 Ford Roadster pick-up truck to keep the battery charged.

Grandpa had bought the truck for about \$300 as a new vehicle in 1928 from a forward looking blacksmith who had gotten the Ford franchise. Interestingly enough, Grandpa never knew how to drive or maintain the vehicle. Grandpa was an upholsterer and he preferred to remain in his creative realm but leave the driving and maintenance chores to his sons, daughters or sons-in-law.

My father taught me how to retard the spark before starting and how to properly hold the crank to avoid a broken thumb. Bill learned how to tune the engine properly perform brake repair and to eventually overhaul the engine.

One day Grandpa announced his retirement. I had just entered the house from the garage and asked my grandfather what he was planning to do with the truck now that he no longer needed it to transport his chairs and sofas. Grandpa said, "I guess I'll have to junk it." I responded, "Can I buy it?"

The vehicle has reposed in the family garage until 2001, and then the renaissance began. It required four years to complete. I performed all the mechanical tasks as well as the upholstery and top restorations. I was planning to do the body work and painting but wisely decided to hand over those chores to professionals.
-Bill Dickenson



The Rearview Mirror.....

On July 4th, the club participated in the Franklin 4th of July parade. It was a great day for a parade - sunny with a few wispy clouds and temperature's in the mid 70's. Last year we had the heat wave and the temperature peaked at 104 so this year was a great improvement. People were overflowing into the street this year to see the marching bands, floats and our Model A's.

Those present were Steve Cloyd with his parents Tom and Kathy in Steve's 1929 Fordor Sedan and Dave and Linda Huenink with Morgan the wonder dog. Although our clubs representation was small we had a very enjoyable time as did the crowd admiring our Model A's.

-Dave & Linda Huenink



Morgan the wonder dog sporting his festive wear.



The Rearview Mirror.....

AHOOGA AH AH AHOOOOOOGA Greendale

The day was about as perfect as you could want for a 4th of July parade. Karen and I had Lizzie decorated, charged and gassed up and ready to go the day before. Karen had all the goodie bags in her car along with a list of 16 Model A'ers that volunteered their time and cars. 7:00 a.m. came all too soon. We planned on being the first to show up in the southridge shopping center parking lot but after our two car safari from Bay View, we were greeted by Bob Lummley and his truly, absolutely, positively, ultra original 1928 Tudor. Bob was accompanied by Linda and his grossly underweight neighbor, Mortimer, (a skeleton) who rode shotgun in the back seat. Thanks Bob. Treat Mort to a burger or two!



As the cars drifted in the excitement mounted. Friendly faces soon were wandering around the ancient machines. Flags and buntings started to appear from back seats and trunks. Roger and Jan Olsen had arrived in their fire engine red, 1929 hard top pickup with a whole armada of cars from Racine.

Gary Schwabe had his plans for the parade that included fun and entertainment. He brought his crowd pleasing 1947 Ford Ferguson tractor, his beautiful 1929 red truck, restored 1967 Mustang and a whole train of additional enjoyment. I think, this years hit of the parade was the garden tractor drawn barrel train. You could say it was a barrel of monkey shiners train. I know the passenger kids were the envy of all the kids in the crowd. Thanks to Roger, Gary and company.

Sal Rojas rode in with his beautiful green on green 1929 Business Coupe after a session with a dead battery and a garage with no electricity to charge it. Thanks Sal.

One of the first to show was Jeff Bezotte in his fantastic licorice black 1929 Roadster Pickup. He and I desperately wanted to discuss our vehicles but that had to be put off for another time as I got back to my chores as chairman. Thank you Jeff.

Lee Paulus had called a few days earlier and said that although his car was still in pieces he and a friend wanted to participate. Jim Tishken made the rumble seat of his delicious 1931 and fun Coupe available and a good time was had by all. Thanks for wanting to be with us Lee and Joan. Jim your hospitality was deeply appreciated.

Soon it became too hectic to notice arrivals. We organized into our own column to await instructions from Sheryl Patzke the Greendale chairman. Our numbers grew with cars of Bob and Sandi Davisson, (Bob, your 1931 Coupe is deluxe only when Sandi is in it), Neil Besouglff, (My favorite has always been the 1931 Vic) , Carl Doro's 1931 "Copper Caper" Coupe, Steve Gapko's 1930 super cool Coupe, and Wayne Ray's 1930 great dating car. Big thank you to every one of you and all your crew members. Karen and I are truly grateful for your support.

-Bill and Karen Dickinson

Many more pictures can be viewed in the photo gallery at www.model-a-wis.com.

The Rearview Mirror.....

Car show at Lutheran Home

Young folks, old folks, everyone came. Staff, residents, volunteers and day care kids. These hot rod Model A's were driven imaginary miles, with horns, bells and whistles blowing. The young day care kids had a great time with the okay of the car owners. Who had the most fun? I don't know but we enjoyed the good comments.

Fast Eddie Schultz showed his window shade and how they worked, Jim Tishken had his crank in to show people how you could start an A if needed, Gene Taurman had to explain how his installed air bag worked, if it did. Steve and Eleanor Gapko displayed the great turn signals, they show up well. Carl Doro was so busy taking pictures and being reporter that his schedule was full. Ron Smith had a hard time adjusting all the kids that were getting in and out, with a few hand prints left behind.

Roger and Jan Olsen had a problem as some of the volunteers wanted to have Roger register for a room (ONLY KIDDING). Bob and Sandi Davisson were kept busy explaining the history of the Model A's and the WI Chapter. Stan and Pat Larson came along for the ride and enjoyed it very much. At my age I hoped they wouldn't keep me!

Michelle Robertson and the chef served us a very nice bag lunch. Big thanks to them!

All in all everyone had a great Model A time. Thanks to all!!!

Stan & Pat Larson



CLASSIFIED ADS:

Classified ads, such as the ones seen here are free. To place your ad please contact the editor, Sue Quam at 414-491-3260 or by emailing your ad to: wheelingthea@yahoo.com
Ads run for one month unless notified to run them again. Ads are due by the 15th of the month.

FOR SALE: 1930 Model A Ford Roadster Convertible with Rumble Seat and Side Curtains, fully restored. About 450 miles on the restored vehicle. Blue exterior, black fenders, tan convertible roof, caramel brown interior and rumble seat. Dual sidemount spare tires, side curtains, trunk rack. Come see and drive this classic. Appraised at \$28,900.00. Make a reasonable offer. Call Bill Stout at 920-988-7320; E-mail: stoutw@hotmail.com.



FOR SALE: 1928 Model A Sport Coupe w/ Rumble Seat. Arabian Sand and French Gray. Older restoration that has been driven very little recently. Runs and drives very nicely. New battery plus a few other new parts. Asking \$7500.00. Call Bob Wirth 262-628-2292.

FOR SALE: Very late 1928 Brown Leatherback titled 1929. The interior of this "A" is in amazing condition and is as fresh as the day it was installed. The body has the look of a recent restoration. This "A" was driven very little due to Jack and Dorene enjoying their roadster more. The car was in excellent running condition when placed in storage 7 years ago. The "A" needs minor maintenance. Asking \$10,000.00. Call Dorene Achterberg for more information @ 262-242-0241 or 262-385-8343.

FOR SALE: 1929 Model A Fordor Sedan- Older restoration in good condition. Green with black fenders, interior in fair condition. Runs great. \$12,500 Call Joe Turba 262-255-1072

Please remember:

- To contact the club secretary if you have change of address, email address or phone number!
- To submit an article before and after your event.
- Deadline to submit articles and ads is the 15th of each month
- Check out www.model-a-wis.com for more pictures of club events.

NEED HELP WITH YOUR "A"? QUESTIONS THAT YOU NEED ANSWERS TO??

Call our technical advisers :
Roger Olsen 262-554-7058
Mike Brojanac 262-252-4340

OUTDOOR MEET ADVISORY TEAM

For help in running an event call:
Jim Kummer 262-895-2897
Stan Larson 262-251-1655
Dave Boucher 262-662-2273

Wheeling the "A"

Wisconsin Chapter MAFCA
Marilyn Brojanac, Distribution
N61 W15975 Beechwood Dr.
Menomonee Falls. WI 53051

Address Service Requested

New Membership Application

Name _____ **Date** _____

Address _____

City _____ **State** _____ **Zip** _____

Phone(_____) _____ **E-Mail** _____

Child or Children's names _____

Model A's _____

Send my newsletter via email _____ or US MAIL _____

*Dues for 2013 for the Wisconsin Chapter, MAFCA:
Receiving the newsletter & roster via the internet is \$20.00
To receive the newsletter and the roster via the US Mail (first class)
the dues are \$30.00 New member applications are approved at the
monthly Board of Directors meeting, which is the second
Saturday of the month. You will receive a welcome letter upon
approval. Dues include membership only in the
Wis. Chapter MAFCA until the end of the current calendar year.*

Send To:

Steve Lewis
Vice President/New Member Chairperson
Wisconsin Chapter, MAFCA
PO Box 26006
Wauwatosa, WI 53226-0006

**** JULY 2013 ****