

# WHEELING THE A

The official newsletter of the Wisconsin Chapter  
Model A Ford Club of America

Volume LIII Issue 7

JULY 2012



## Memorial Day Overnighter Trip

### Inside this issue.....






- Page 4 4th of July Parades
- Page 5 July Tour
- Page 5 Invite to Bluesfest
- Page 6 Field of Honor
- Page 7 Annual Picnic
- Page 8 Reach for the Stars
- Page 8 3 New Videos
- Page 9 Threshere
- Page 11 Technical Article
- Page 12 Era Fashion
- Page 15- Rearview Mirror  
22



*"The Tallman House, our first stop was steeped in early Wisconsin history. It was built in 1855, costing \$33,000.00 and was paid for with gold." Story starts on page 17.*

FOR MORE INFORMATION LOG ON TO [WWW.MODEL-A-WIS.COM](http://WWW.MODEL-A-WIS.COM)

## Board of Directors 2012:

|   |   |
|---|---|
| <p><b>President:</b> : Dave Boucher<br/>262-662-2273<br/>president@model-a-wis.com</p>        |    |
| <p><b>Vice President:</b> Mike Clinnin<br/>414-294-0238<br/>vicepresident@model-a-wis.com</p> |    |
| <p><b>Secretary:</b> Dave Huenink<br/>262-378-4216<br/>secretary@model-a-wis.com</p>          |    |
| <p><b>Treasurer:</b> Paul Piotrowski<br/>262-513-1089<br/>treasurer@model-a-wis.com</p>       |    |
| <p><b>Outdoor:</b> Gene Taurman<br/>262-242-0137<br/>outdoor@model-a-wis.com</p>              |    |
| <p><b>Indoor:</b> Mike Yokofich<br/>414-651-1243<br/>indoor@model-a-wis.com</p>               |   |
| <p><b>Technical:</b> Neil Besougloff<br/>262-490-1479<br/>techmeet@model-a-wis.com</p>        |  |
| <p><b>Sunshine:</b> Steve Lewis<br/>262-573-9821<br/>awards@model-a-wis.com</p>               |  |

## Volunteers for 2012:

|  |
|--|
| <p><b>Editor:</b> Sue Quam<br/>Home-262-785-9021<br/>wheelingthea@yahoo.com</p>            |
| <p><b>Webmaster:</b> Carl Doro<br/>414-259-9692<br/>webmaster@model-a-wis.com</p>          |
| <p><b>Club Property:</b> Rich Miller<br/>262-782-2240<br/>property@model-a-wis.com</p>     |
| <p><b>Tool Keeper:</b> Bill Storey<br/>262-338-0452</p>                                    |
| <p><b>Distribution:</b> Marilyn Brojanac<br/>262-252-4340    marilyn@rodrian.com</p>       |
| <p><b>Distribution:</b> Lorraine Schultz<br/>262-251-3043</p>                              |
| <p><b>Club Photographer:</b> Barb Sonnen, Jo Lene Janssen and Peter Stauber</p>            |
| <p><b>Video Librarian:</b> Ron Smith<br/>Home-262-628-3688</p>                             |
| <p><b>Club Historians:</b> Art &amp; Sue Blazek<br/>262-538-4474<br/>ablazek@wi.rr.com</p> |

Please send all Wisconsin Chapter  
Correspondence to:  
WI Chapter MAFCA  
PO Box 26006  
Wauwatosa, WI 53226-0006

**For more information log on to [www.model-a-wis.com](http://www.model-a-wis.com)**

It is the intent of the Wisconsin Chapter to serve as a medium of exchange of ideas, information, and materials for admirers of the Model A Ford and Model A era fashions; to help those admirers become better acquainted; and to maintain among its members the spirit of good fellowship and sociality through sponsored activities including the use of the Model A and family participation.

## ADVANCED TIMING SCHEDULED EVENTS FOR 2012

**July 4** Greendale Parade - Bill & Karen Dickenson

**July 4** Franklin Parade - Dave & Linda Huenink

**July 22** Barn Quilt Tour - Hosts Bob & Kitty Schaefer

**July 28** South Milwaukee Heritage Day Parade - **HOST NEEDED**

**July 27-29** WI Rapids Reunion -**HOST NEEDED**

**Aug. 12** Annual Picnic - Pete Stauber, corn; Dave Huenink, meat; Dave Boucher serving salads and desserts; Mary Powell, beverages; The Smiths, Adult games; Cheryl Prochnow and Mark Ackerman children's games

**Aug. 25** Reach for the Stars Tour - Hosts Dave & Linda Huenink

**Sept. 9** Luther Manor Car Show - Carl & Lu Doro

**Sept. 15** Mitchell Manor Car Show - Dave & Linda Huenink rain date 9/22

**Sept. 15** Richfield Thresheree - Ron & Diane Smith

**Sept. 22** Tour - Bob & Sandi Davisson

**Oct. 14** Fall Tour - Marty & JoLene Janssen

**Nov. 11** Veterans Day Parade - Neil Besougloff

**Nov. 11** Indoor Meet- Hosts Pete Stauber & Mary Ciocarelli

**Nov. 18** Waukesha Christmas Parade - Dave & Linda Huenink

**Dec. 9** Christmas Party - **HOSTS NEEDED**

**Jan. 13, 2013** Custard Social & BOD Election - Hosts Cheryl Prochnow & Mark Ackermann

**Jan. 26 or Feb. 2** Banquet- **HOSTS NEEDED**

**Feb. 10** Trivia Contest - Hosts Mike & Sue Quam

**March 10** Dog Agility- Hosts Dave & Linda Huenink

# Milwaukee's Dry Stripping Headquarters

**262.781.8884**  
4907 North 124th Street  
Butler, WI 53007

**Specializing in:**

- Industrial Blasting and Painting
- Automotive Paint Stripping
- Metal Furniture Stripping and Refinishing
- Do It Yourself Sandblasting Cabinets

**U-SPRAY**  
INCORPORATED

*Livin' the "A" Life...*

**Marty Janssen, CPA**



Collector of **P**ractically **A**nthing



JANSSEN + COMPANY

CPA & Accounting Services    Human Resources  
Information Technology       Payroll Specialists  
Wealth Management

262.513.9292 • 262.513.9282 fax

Marty.Janssen@janssen.com  
www.janssen.com



## Franklin 4th of July parade

With the warm days we have had, come one, come all and join the Hueninks with Morgan the wonder dog in the Franklin 4th of July Parade.

This year as in years past, promises to be an enjoyable time. Morgan will be sporting his 4th of July apparel. The line up will be at 9:45 a.m. and the parade starts at 11:00 a.m. Our assembly point will be on Highway 36 east of Highway 100 in Franklin. If you have any questions please call Dave Huenink at 262-378-4216.



# Join the fourth of July Parade in Greendale



**This parade is a major event for the club and is traditionally a lot of fun. Please call Bill or Karen Dickinson, 414-744-0937**

Date: Wednesday, July 4th, 2012

Time: 9:30 AM Line-up

10:30 AM Parade Start

Assembly Point: Southridge  
Parking Lot

North of Grange  
near Westway.



HAPPY BIRTHDAY  
**America**



OPEN  
Monday-Saturday  
10:30 am



Closed  
Sunday's

3146 S. 27th St



**Badger**  
METAL FINISHING & COATINGS INC.



Specializing in:

**Custom Plating**

Auto, Truck, Motorcycle and Marine parts  
Show Chrome • Black, Gold, Brass & Nickel Chrome  
All Colors Powder Coating & Anodizing • Clear Anodizing  
Repair and Refinish any Truck, Car or SUV Bumpers and Rims  
Stainless Steel, Aluminum, Diecast • Antiques • Marine

5 Day Service Per Request • M-F 9 - 5 • Saturday By Appointment Only

4021 S. Kinnickinnic Ave. customercare@badgermetalfinishing.net (414) 482-4820  
St. Francis, WI 53235 www.badgermetalfinishing.net Fax (414) 482-4822

## Barn Quilt tour on July 22.



We will meet at the Culvers on South Howell Ave. (Hwy 38) just north of Drexel Ave. (7841 S. Howell

Ave.)

Departure is set for 1:30 p.m. The tour will take us south to eastern Racine county to see 9 of 21 barns, each with a different quilt pattern painted on it. We will use a staggered start. That is a group of about 5 cars will leave every 5 minutes so as not to bunch up too many cars in front of any one barn. A description and history of the various quilts will be provided along with the driving instructions. The tour will end at Apple Holler restaurant for a light snack and beverage.

Bob & Kitty Schaefer

## YOUR INVITED TO BLUESFEST

The Waukesha Rotary Club

Friday, August 10, and Saturday, August 11, 2012

You're invited to attend either day or both days. Two tickets will be provided free for each day you attend with your Model A. We would like you to arrive between 12:30 p.m. and 1:30 p.m. Please stay until 6:30 p.m. but you are welcome to stay until closing at 10:30 p.m. The event is held at Naga-waukee Park in Delafield located on Highway 83 about one mile North of I-94

We had eleven Model A's at the event last year on Friday. The attendees at the event had very positive comments about the A's. The event committee has requested that it would be nice to have the A's there both days.

Contact Marty Janssen for reservations at mjanssen@wi.rr.com or call 262-696-4271.

**BRASSWORKS**  
MADE IN THE U.S.A.

Early Ford Radiator Reproductions  
Radiator Restorations  
Custom Built Radiators

28-29  
30-31  
32  
33-34  
35  
36  
37-39  
40-41

Radiator Cores  
Flat Tube  
Round tube  
Honeycomb  
Cartridge

Heater Cores  
Fan Shrouds

Paso Robles, CA

www.thebrassworks.net 805.239.2501

## MIKE'S REPAIR SERVICE

Model A Ford and Early Mustang  
Parts and Service

Mike Quam, Owner  
16130 Top-O-Hill Drive  
New Berlin, WI 53151

Visa and Mastercard Accepted  
(414) 491-3191 • (262) 785-9021

MIKE BROJANAC (414) 464-7814  
All Work Guaranteed

## THE BRAKE SHOP

7665 W. APPLETON AVE  
MILWAUKEE, WI 53222  
Complete Auto Repairing



## HDR Inc. - Heavy Duty Radiator Repair

N56 W13332 W. Silver Spring Road  
Menomonee Falls, WI 53051

262-252-3920 FAX 262-252-3934

Bill Kowalefski



We Take Care of Leakers!

Specializing in Any and All Kinds  
of Radiator Repair





## Field of Honor: A Salute to the Greatest Generation

At Miller Park, Home of the Brewers

August 11<sup>th</sup> 2012

This once in a generation event will bring together thousands of World War II veterans and veterans from other conflicts, their families, friends and communities. The event will feature the world premiere of the Stars and Stripes Honor Flight Documentary on the Miller Park high definition video board and special viewing of the official model of the World War II Memorial on loan before going to the Smithsonian.

### The schedule of events is:

**3:30 p.m.** Parking Lot Opens: World War II re-enactors & Live Music

**4:30 p.m.** Stadium Opens: Pillars of Honor World War II Memorial Model and SSHF Art Show

**6:30 p.m.** Program Begins: World Premiere of the Honor Flight Documentary Movie

**9:00 p.m.** Flyover and Fireworks

Here's where we come in. I need about five Model A's for display and if you own a different car from the 30's or 40's, I need them also. I am looking to display about twenty-five cars total. So call and reserve a spot with me. If you know someone that is not a club member but has a 30's or 40's car, have them call me. I need all makes, Ford, Chevy, Buick, Olds, Mercury, etc.

The car display will be from 3:00 p.m. to about 6:00 p.m. If you want to attend the program you will need to order tickets. The cost is \$11.00 per ticket. Tickets can be ordered on line at [Field of Honor/Brewers.com](http://FieldofHonor/Brewers.com).

Even if you don't have a car to display, you may want to attend this worthwhile event.

For more info go to [www.honorflightstories.com](http://www.honorflightstories.com) Call Dave Boucher at 262-662-2273 to register your car.

Space is limited.

## Sunshine Report

Carrie Frank spent some time in the hospital in May. She is doing well, taking it easy, and was even able to join us on the May Tour to Old World Wisconsin. We hope you continue to heal and are back to your normal self soon.



Sue Quam has knee surgery June 15<sup>th</sup> to repair torn meniscuses. She is doing very well and will be on crutches for 8 weeks!

Thank you to all the club members for their prayers, kind words, thoughts, cards, gifts, well wishes, and hugs. They all helped in keeping up my spirits, and the prayers definitely help in making my recovery a speedy one with the least possible problems. I'm looking forward to finishing up the last two chemo treatment and then being on the road to a full recovery and being cancer free hopefully for the rest of my life. -God bless you all, Karen Sikkert

If you have sunshine to report, please contact Steve Lewis 262-573-9821 or by emailing: [awards@model-a-wis.com](mailto:awards@model-a-wis.com)



2012 Annual Model A Picnic  
 Sunday, August 12<sup>TH</sup>  
 Malone Park 3953 S. Casper Dr.  
 New Berlin, WI



COSTS: Members and kids under 12 are free

Adult guests are \$5.00 per person

Bring a salad or dessert to share

Call or email Gene & Betsy Taurman 262-242-0137, bheth@sbcglobal.net to make your reservations.

We need a head count of adults and children to assure enough food and drink.

We need extra help during the picnic to cook, run games, and clean up. Please contact one of the leaders to help. The leaders are: Sweet corn – Pete Stauber, Meat – Dave Huenink, setup for salads and desserts—Dave & Donna Boucher, Children’s games—Cheryl Prochnow and Mark Ackermann, Adult games—Ron & Diane Smith, Beverages—Mary Powell

Wisconsin Chapter Member  
 Al Downs



## Mail Truck Model A

Providing all of your Model A needs  
 8509 S. Howell Ave  
 Oak Creek, WI 53154  
 414-762-7288

We now offer shipping and Model A Service

### Templin's Old Time Auto, LLC

Model A Ford Parts New, Used, & Rebuild  
 1022 Mulberry St./County A • Lake Mills, WI

*We offer mechanical repairs - specializing in Model A's*

Monday - Thursday  
 4:30 pm - 7:00 pm

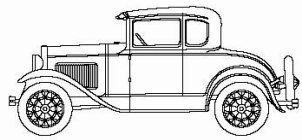
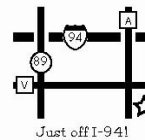
Saturday  
 9:00 am - 4:00 pm

Friday - Closed  
 By Appointment Only

Also Closed on  
 Sundays, Holidays  
 and Swap Meets

Orders can be faxed or e-mailed in at anytime

(920) 648-5282 - Phone • (920) 648-5920 - Fax  
 jeff@oldtimeauto.net



www.oldtimeauto.net • Jeff Templin, Owner

## We've Revolutionized the way you find Model A Parts!

YOUR MOST RELIABLE SUPPLIER OF QUALITY PARTS FOR OVER 20 YEARS!

FOUR CATALOGS TO CHOOSE FROM:

• Coupe • Pickup • Open Car • Sedan

CALL & ORDER YOUR FREE CATALOG TODAY

**1-888-879-6453**

www.mikes-afordable.com



## **Come one, come all** and join Dave and Linda Huenink on the “Reaching for the Stars” Tour August 25<sup>th</sup>, 2012

We will meet at the McDonalds on Hwy 164 and National Avenue (Hwy ES) in Big Bend at 12:30 p.m. and plan on departing at 12:45 p.m. We will tour the Waukesha County country side and stop at the planetarium at the Retzner Nature Center for a 1 hour presentation which they will be doing just for our group. After the presentation we will spend some time exploring the Retzner Nature Center. The center has a lot to offer and the scenery is fantastic. From there we will hit the road for a little more touring before we stop for a bite to eat for those who want to stop.

***YOU DO NEED TO RSVP***, so we have a count for the planetarium and the restaurant. Morgan the wonder dog will not be making the tour as he has a prior engagement. If you have any questions or want to RSVP please call Dave Huenink at 262-378-4216.

## 3 New Videos

Dennis Granetzke of Racine has donated three new VHS videos to the library of the Wisconsin Chapter Model A Ford Club.



**They are :1. Yokohama Model A; building the 1930 Ford in Japan.** At the peak of Model A production, Ford had assembly plants in many countries around the world. This rare film takes you up close to activities at the new Yokohama, Japan plant which opened in 1931. Cars being built are the 1930 Model A's, since foreign-built Fords were generally a year behind the U.S. version in styling. Coverage of assembly procedures is outstanding, from the build-up of the frame and chassis to the body-build, painting, upholstering and striping. A full documentary written and produced by Lorin Sorensen.

**2. The New 1932 Ford V8; Henry Ford Builds an American Legend.** The experts said it couldn't be done but, defying all odds, Henry Ford went ahead and built the auto industry's first low-price V8 engine. Then he had his son Edsel design a car it would fit in. The result was a masterpiece of speed and beauty-a car that would become one of the great legends among American youth. Written and produced by Lorin Sorenson, with edits from the Ford film "Source of the Ford Car" the story has all the trials and tribulations of creating the car as well as the personalities that made it happen. Includes mechanical details, assembly lines, promotions, shows, and all passenger body styles.

**3. It's Ford for '40; Promoting the New Passenger Models.** The new Ford Standard and Deluxe passenger line for 1940 was a beauty and was promoted heavily against its competitor Chevrolet. The Ford story is told here with an edit of six great promotional films including: Ford Style Show for 1940, Review of a Preview, Symphony in "F", and Scenes from the New York World's Fair for 1940. The footage abounds in beautifully clear details of chassis, body, and interior and includes all Ford passenger models and some Mercurys and Lincolns. Also shows the Ford assembly line in color.

Contact Ron Smith, Video Librarian to view these new videos. 262 628-3688.





Mark your Calendar and watch for details

September 15, 2012

14th Annual Thresheree

Richfield Historical Park

9 a.m. to 5 p.m.

Chairpersons: Ron and Diane Smith

(262 628-3688)



## **“A” ..line from the Prez**

First off this month we would like to thank Steve and Debbie Lewis for volunteering to be our new paid advertising chair persons. This position is important to our club as it is a revenue maker for us. Again, thanks to Steve and Debbie.



A special thanks to Barb and Bob Sonnen and family and Neil Besougloff for their participation in the Memorial Day parade. This is a very special day to all of us, particularly to our veterans and their families.

It was 40 years ago this month that I joined Wisconsin Chapter MAFC. After purchasing a Model A 2 door, I searched out the club and met Mary Gurgul and Marilyn Brojanac. The two of them convinced me to join and both of them are still longtime friends of mine along with a lot of other members. I also had the pleasure of meeting and knowing a lot of the original founding members.

Throughout the years by participating in and running events, I got to meet a lot of members. Eight years ago when I married Donna, she wanted to get involved with the club and now she enjoys the club as much as I do. I asked a former member if he wanted to return to the club and his response was “what’s in it for me?” It’s like anything in life, you get out of it what you put in. If you’re not involved now, try it, I know you will enjoy it. If you’re concerned about how to run an event just ask. If you don’t want to run an event, start out by participating in one with or without a Model A. I am looking forward to seeing some new faces at our upcoming events.

That’s it for now. Hope to see you at our July events.

Thanks,  
Dave Boucher  
President

## ***Wisconsin Chapter of MAFCA Board meeting 6/9/12***

Meeting called to order at 7:00 p.m.

### President - Dave Boucher

Two thank you letters received, one from the Zeman family and one from the War Memorial Center for our donation. There were no corrections to last month's minutes.

### Finance Chairman- Paul Piotrowski

The books balance again. Paul reviewed the monthly financial documents, motion to accept by Neil Besougloff, second by Mike Clinnin. Passed.

### Outdoor Chairman - Gene Taurman

Events going Ok. Picnic is staffed. There are two picnic planning meetings scheduled. Board suggested we plan for 125 to 140 attending. Board suggested the planning should begin for next year.

### Indoor Event Chairman - Mike Yokofich

Planning is under way for the fall events. November, Pizza party chaired by Pete Stauber and Mary Ciocarelli; December, No chairman yet; January, Ice Cream Social; Banquet No progress and No chairman; February, Trivia Contest with Mike and Sue Quam; March, dog skills demonstration with Dave and Linda Huenink. Hall rental contract is coming due. Mike will request a check for the police dog demonstration and deliver it to the policeman who will carry it to the dog training center in Minnesota.

### Technical Chairman - Neil Besougloff

Mail Truck Model A is changing but we will see no change, our tech events will continue to be held there. Al Downs is retiring and selling his half to Tony Baudo. The building has been sold but Tony will lease enough space to carry on the business just as we have known it. Otherwise no news to report.

### Awards and Sunshine Chairman - Steve Lewis

Nothing to report

### Old business:

Steve and Deb Lewis volunteered to be paid advertising chairman. Their goal is to increase the ads from 7 to 16. Carl Doro now has photo shop software.

### New Business:

August board meeting date change to 8/18/12, Next meeting is at Boucher's and cookout is planned. Meeting adjourned at 7:50 p.m.

Submitted by Gene Taurman



## Tips on repairing your gas gauge

If your gas gauge has lost its accuracy over the years it is not difficult or particularly expensive to replace some or all of your Model A gas gauge parts.

The Model A gas gauge is a cork float attached to a stiff wire bent to fit inside the gas tank. The wire pivots on a frame near its base, similar to a seesaw, and the end of the wire is connected to the portion of the gauge you see through the lens in your dashboard. As the tank fills and the float rises, the gauge registers “F”, or full. As the gas empties from the tank, the float lowers until the gauge registers “0” for empty.

Model A parts stores sell a variety of gas gauge replacement parts including cork or neoprene rubber floats, the wire and inner gauge assembly, the nuts to attach the gauge, the lens, and the associated brass and fiber or rubber gaskets.

Some Model A'ers suggest only using neoprene floats today because they say that the ethanol in our gasoline eventually eats away at the varnish-covered cork float, leaving you one day with no float at all.

To repair or replace parts of your gas gauge, you'll need to buy a special tool kit or borrow the gas gauge tool kit our club tool-keeper holds. The tool is nothing special, but you can't really remove the gauge without it. There are two tools needed. The first is a flat, 10-sided sheet metal wrench designed to remove the outer ring of the gauge. You use it just like an ordinary wrench. The second tool, shown in the accompanying photo, is just a block of metal with a rod for a handle. The end of the block fits into the star-shaped opening in the center of the gauge, which can then be turned and removed.

The gauge repair kits I have seen all contain clear instructions, and there is further information on removing and installing gas gauges in *Model A Mechanics Handbook, Vol. 1*, by Les Andrews, and other publications.

Before starting to work on your gas gauge, you'll need to empty the tank of gas at least several inches below the opening of the gas gauge in your dashboard. You don't want gas to pour out as you loosen the nut holding the gauge in place or as your body weight in the car causes the remaining gas to shift in the tank.

Equally important is to disconnect your battery. The chrome dash panel must be moved several inches out of the way to gain access to the gauge nut. You may be able to move the panel far enough away without disconnecting any of its wires. But since you are working with metal tools next the backside of the dash panel (and its electrical wiring) in proximity to gas fumes coming from the tank once the gauge has been removed, you don't want any sparks caused by a tool unintentionally shorting the back of a live dash panel.

There is no way to test the replacement parts without reassembling the gauge, the dash panel, and filling the tank. So take your time as you thread the float and wire back through the dash opening and between the baffles in the tank. It follows a winding path, so be careful not to get the float tangled on part of a baffle. Lastly, be sure to tighten (but not over tighten to the point of twisting your gaskets) both of the gauge nuts before filling up with fresh gas. You don't want gas seeping from the opening and running down the underside of the dash and onto your feet. Trust me on that one! – Neil Besougloff, technical chairman



Gas gauge parts such as cork floats and various gaskets are available from parts stores, as well as the specialized gas gauge removal tools.



The metal-block tool is designed to fit into the star-shaped opening in the gas gauge. Twist the block to remove the inner portion of the gauge.



## Paris Defines Formality With Draping and Width

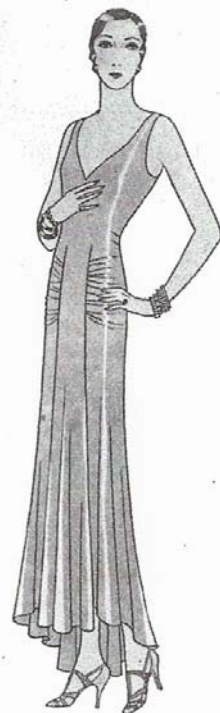


*Redfern-1469*

Redfern's Design No.1469, adopts such smart features as its capelet bertha, surplice line and hip bow, shirred waistline, and circular skirt with a panel insert in front.



Nicole Groult-1471 includes such features, both graceful and chic, as the dripping circular tiers, the shaped capelet bertha, and a youthfully rounded neckline. The original is a printed chiffon.



*Paul Poiret-1470*

Paul Poiret-1470 has a classical feeling in its shirred hip line, and a princess feeling at the waist; the skirt panels, front and back, and the skirt itself are circular. The original is of very soft supple shell-pink satin.

Era Fashions by Diane Smith



# Reminiscing with the Historian

Submitted by Art and Sue Blazek

From The Milwaukee Journal July 28, 1966

## Old Autos Tired but Perky as They Reach Destination

By CHARLIE HOUSE  
Of The Journal Staff

Albuquerque, N. M. — We traveled the long road to its end Wednesday after five days behind the wheels of tired, but still perky, model A Fords.

We arrived at our destination here precisely on the carefully arranged, often re-adjusted schedule.

The odometers on the six cars in the caravan were not true to their basic obligation, which is to record mileage with accuracy—but then, what the heck. They're tired. Most of them have gone around a great many times.

At any rate, after prideful boasting by owners of the model A Fords which took us—somehow—this far, it was reluctantly agreed that the odometer of Ronald Schneider, 16, was the most truthful. It recorded 1,450 miles.

### 18 Miles Per Gallon

His gasoline tank drank a gallon of gas for each 18 miles. Schneider's odometer registers 70,000 miles. He

thinks it is on the second time around.

My new friends, all model A Ford enthusiasts, are persistently angry with Henry Ford for discontinuing what they believe to be the most lovable car ever made by man. The truth is, of course, that these cars are easily persuaded to do things properly.

The fact is also that the model A's in this Wisconsin chapter of the Model A Ford Club of America are so reverently tinkered with, so affectionately treated and so enthusiastically perfected, that they are probably better—in spite of their age—than the ones which rolled off the assembly lines from 1928 through 1931. Ford made about five million of them during those years.

Today, a safe guess is that there are about 225,000 model A Fords still running and another 400,000 not in use. The joy of finding and fixing and beautifying the little cars is reason enough for

living among model A enthusiasts.

Albuquerque shows it. There are in this city of 201,000 about 400 model A Fords.

They are in every classifiable condition from chugging junk piles to amazing beauties.

### Some Come by Trailer

Some 1,500 people are here to display their automobiles and to discuss them in terms of carburetors, pump assemblies and transmission bearings, to say nothing of coloration and finishes. Wives and children have accompanied husbands, and boasting in corridors here is unrestrained.

Some owners have skulked into town dragging their lovelies draped and inside closed trailers so as not to foul them with a speck of dust. Others have towed them across the country to show them off in this national convention and to vie for the many prizes having to do

with condition and beauty as well as performance.

The Wisconsin chapter is righteously proud of having driven six automobiles across the country, for many have not driven an inch of the way.

Others, however, have been vallant, too. There are aged Fords here from as far away as Rhode Island that have been driven here, proudly.

### Worked Four Years

Francis Drake, of 2783 S. 75th st., West Allis, had worked four years on his 1929 Ford and it was the only one to make the journey from Milwaukee without a tinker. As other members of the Wisconsin chapter did, Drake brought his family, for the model A club is specifically a family function.

Demo Staver, 1920 Highland dr., Elm Grove, brought his deluxe roadster and his two children. His car has also run nearly faultlessly on the long trip. Except for a boiling radiator one hot day, his dear friend performed beautifully.

The other members have had some serious, or semi-serious tinkering to do, and they have done it with joy and pride.

### Grief and Joy

The ride itself was long, and grief has been intertwined with the earlier joy. In an automobile accident we lost two friends, one dead, one severely injured.

Harold Cable, 28, of Chicago, was killed in a collision Tuesday that also cost the life of a Texas woman in another car.

The injured club member, Louis Judzewicz, has undergone additional surgery at St. Anthony's hospital, Oklahoma City, Okla. Thursday he was reported slightly better but still in serious condition. His wife, Lucinda, is with him. They live at 7625 W. Rawson av., Franklin.

We drove into Albuquerque in a violent rainstorm Wednesday. Wettest members of the troupe were Cheryl Koser, 14, and the reporter.

Thursday the national convention began, and the Wisconsin members—all 31 of them—will be active in whatever it is that model A lovers choose to be active about. We shall soon know.

Sunday, July 24, 1966



Waving good-by from the rumble seat of a model A Ford, Cheryl Koser, 14, and her brother, Gary 15, of 13645 Serene la., Brookfield, started Saturday for Albuquerque, N. M.

—Journal Photo



## ONE MEMBER'S FLIGHT OF HONOR

I had the good fortune to be selected to go on the Stars and Stripes honor Flight to Washington on Saturday, June 2. It was a great experience to see the World War II memorial as well as several other war memorials, the Tomb of the Unknown Soldier at Arlington Cemetery, along with the changing of the guard there. Being in uniform I stood up and saluted the flag during the retreat ceremony.



I had the pleasure to be with my old comrade Jim Schmitt who served with me for a year and a half in the 289th Engineer Battalion in 1944 and 1945 in France and Germany.

The welcoming home ceremony at Mitchell Field was over whelming. I heard an estimate of 12,000 people all clapping and cheering. I was greeted by my wife Jan, son Dan, his wife Kathy and their son Adam. Also my daughter Martha came from Minneapolis to welcome me home.

-Old Soldier Wally Klager

Thank you Wally for submitting your interesting story, and a big thank you for serving our country.





# LOOKING BACK IN THE REARVIEW MIRROR

## ***Clue into the May Tour Highlights!***

Ever heard the saying “Get a Clue”? Well, for those that participated in the May tour to Old World Wisconsin, nobody was left clueless..HaHa. This tour included 9 clues to landmarks along the route. On Sunday May 20<sup>th</sup> starting on Capitol Drive in Pewaukee, the 40+ mile route took us through the wooded areas of ‘Lake Country’ including the towns of Merton, Nashotah, Delafield, and Eagle, Wisconsin; around and along the shores of multiple inland lakes – quite a scenic route. In addition to the scenic route, all cars were given a set of directions and “clues” to lead them to landmarks such as local parks like Lapham Peak, Historical Restaurants, Community buildings, water towers, and the Ice Age Trail. Overall, there were 33 tour participants in 11 Model A’s and 5 Modern cars.

It was great to see that everyone arrived safely and in a timely fashion to award prizes to cars that successfully collected tickets from the landmark clue locations. The patrons and staff of Old World Wisconsin enjoyed viewing the Model A’s and invited us back for a longer visit next time. The clues were not required but added an element of fun. While drivers and riders seemed skeptical of the unknown at the beginning of the route, the feedback at the end of the tour seemed positive with several stories of laughter. A few cars even discovered new territory not shown on the map. Some Examples of the Clues and Landmark Answers:

1. The frogs swim high in this above ground indoor pool. Drenched or Doused are the men in this town. (Answer: Dousman Water Tower with large frogs painted on it)
2. Take a lap, have a ham, take a peek (Answer: Lapham Peak State Park)
3. Shooting at Red Targets can make you hungry. Stop on Inn to satisfy your hunger full circle. (Answer: Red Circle Inn Restaurant)

- Jon Taurman



# LOOKING BACK IN THE REARVIEW MIRROR

## Memorial Day Parade

Memorial Day, 2012, threatened to be a HOT and rainy day but it turned out to be fairly nice (cooler by the lake). Only two model A's showed up for the parade, they were Neil Besougloff and Bob & Barb Sonnen and their guest, Danny Fucile, a two time Afghanistan Vet. Also riding with the Sonnen's was their great granddaughter Allie Krug and friend Sophia Finch.

Bob Sonnen



Barb Sonnen & Dan Fucile, Allie Krug & friend Sophia



Barb Sonnen waving to the crowds. Bob decided this year he wanted to watch the parade. Thank you Bob for the excellent side line pictures!



Neil Besougloff



# LOOKING BACK IN THE REARVIEW MIRROR

2012 Memorial Day Week End Tour.  
May 26 - 28, 2012

Eighteen Model A's and four modern iron left with a little moisture falling. I joked that we should drive out of this stuff when we got to Iowa border. I had some drivers that believed me, until I told them we were not going that far. Just a little snow job on my part. We did have great weather before we arrived at the Tallman House.



The Tallman House, our first stop was steeped in early Wisconsin history. It was built in 1855, costing \$33,000.00 and was paid for with gold. There was not a government back currency in 1855, hence the use of gold for payment. One of the trivia questions I had on the test was the price of gold per oz. at that time. It was \$18.00 per ounce. Abe Lincoln spent a night as the guest of the Tallman family in 1859. About 75% of the furnishings are from the family that used the house at that time, including the bed Lincoln slept in. Google it and read an interesting story.



The tour then headed to Fort Atkinson where we visited Nasco Products which is art supplies and teaching items. We also stopped at Jones Dairy Farm to see the famous sausage company and visit their store to buy a few items such as limburger cheese and meal products.

It was banquet time so we headed to the garage a.k.a. a dining room at Famous Dave's for ribs, brisket and other finger licking good food. Bob Heinrich sold raffle tickets for our raffle held back at the motel. One night's lodging won by Marilyn Brojanac and the second one by Mary Ciocarelli. Ticket for The Fireside to see Legally Blonde won by Marlene Stegner, \$50.00 cash for gas won by Dave Neuman, \$25.00 cash for gas won by Sandy Burgermeister and \$25.00 cash for gas won by Donna Neuman. Free dinner and cap from Famous Dave's won by Margaret Ford.



*Continued on next page.....*



2012 Memorial Day Week End Tour continued.....

Sunday we were off and running to the Milton House for a tour of the Hotel that was part of the under ground rail road. Interesting history on how the slaves were brought from southern states and transported on to Canada where they were freed. I think every one would agree that this was a very good stop and worth a visit.



Then we were off on a scenic drive to the Fireside Theatre to a wonderful meal and the show Legally Blonde. Good seats and reserved parking for our Model A's made it a good evening. A fiftieth wedding anniversary for Jim & Marlene Stegner and a happy birthday to Fast Eddie Schultz. Pizza party at the motel with a gift of 50 precious coins for the Stegner's, no gold just copper pennies.



Memorial Day was great with a visit to the Rotary Garden, then we were off to join the Janesville Memorial Day parade. The Wisconsin Chapter was the grand finale with our Purple Heart recipient, Art Blazek out front leading the parade. We were the noisiest with a great assortment of horn's, bells, and other noise makers and I know we were the best group in the parade.





At the parade end we had reserved parking for the Rock Aqua Jays water ski show. They pull 23 skiers with a boat that has 3, 300 HP motors. All I can say is WOW, what A weekend.

Thanks to all the Model A'ers that attended this tour, with only minor problems (three flat tires) and nothing that we could not fix or repair.

So close to home with so much history.

Thanks from STAN & PAT LARSON.





# LOOKING BACK IN THE REARVIEW MIRROR

**The 16th “Model A Day at Sharon” is in the history books.....**

Sunday, June 3 was a gorgeous day to go touring.... blue skies, 70 degree temperatures with a gentle breeze. Six Model A's and their owners staged at McDonald's in New Berlin. Fortified by some good hot coffee and a couple of Egg McMuffins, we cranked up and headed for Sharon promptly at 7:15 a.m. One Model A joined us at East Troy. After a pleasant drive with no car problems, we arrived in downtown Sharon about 8:45 a.m. Other Chapter members from the Racine area arrived separately in four Model A's. After registering our cars and receiving our dash plaques, we started looking at all the A's on display.

Attendance was down again from previous years. The “unofficial” tally of A's that we were given was 191. The count was over 350 three years ago. The planned re-enactment of a Model A assembly line did not materialize. The people at the Wisconsin Historical Society booth told us that they were not able to acquire the items needed to assemble it.

We did get to witness a bank robbery though. Three mean looking guys in a Model A pulled up in front of “the bank” and ran inside. Shots were heard, then as they ran out to their A, the local Sharon Police Model A roadster, driven by the “town cop”, along with some armed citizens, arrived in the nick of time. A big “shoot out” followed (real pistols and shot guns with blanks) with the bad guys being “wounded” and captured.



Of course, the annual ritual of feasting on home made pie and ice cream at the Civic Center was continued. The sidewalk vendors were out in full force with their crafts, antiques and food offerings. As usual, bratwurst and burgers were available all along the street. The annual pig roast set up in the little Veteran's Memorial Park was busy serving dinners. Live music by "Tangleweed" was on stage in the park gazebo and "The Soggybottom Boy's" provided recorded music at the center circle on Main Street.



About 2:00 p.m. people were starting to leave. Several of us agreed that we should too, so we loaded up and convoyed back to the Milwaukee area. It was a really nice day and if you didn't make it this year..... there's the 17<sup>th</sup> annual event next year. It's always the first Sunday in June.



Chapter Members and guests who made it to Sharon: (We think we have everybody.....)

Mark Ackermann  
 Jeff & Kathie Bezotte  
 Dave & Donna Boucher  
 Mike Clinnin  
 Bob & Sandi Davisson  
 Dave Huenink  
 Jim Navin

Bea Olsen  
 Roger & Jan Olsen  
 Mike & Bonnie Ostrenga  
 Tammy Peltz & "K J"  
 Mike & Sue Quam  
 Bob & Karen Schmiechen & Adam  
 Jim Tishken

Bob & Sandi Davisson  
 Tour Hosts





# LOOKING BACK IN THE REARVIEW MIRROR

## Flag Day Tour



## **CLASSIFIED ADS:**

Classified ads, such as the ones seen here are free. To place your ad please contact the editor, Sue Quam at 262-785-9021 or by emailing your ad to: [msquam@wi.rr.com](mailto:msquam@wi.rr.com) Ads run for one month unless notified to run them again.

FOR SALE: 1930-31 Tudor asking \$7,500 Wautoma .Call Bob at (920) 787-2474

FOR SALE: 1930 Model A standard coupe, all steel. Restored, black with apple green wheels and stripe. LeBaron Bonney interior. Drive it home. Asking \$12,900.00. Call Herman @ 414-481-2220 or 414-614-2666

### **OUTDOOR MEET ADVISORY TEAM**

For help in running an event call:

Jim Kummer 262-895-2897

Stan Larson 262-251-1655

Dave Boucher 262-662-2273

**NEED HELP WITH YOUR "A"?**

**QUESTIONS THAT YOU  
NEED ANSWERS TO??**

Call our technical advisers :

Wally Kaufman 262-628-3003

Roger Olsen 262-554-7058

Mike Brojanac 262-252-4340

Remember to let the club secretary know if you have a change of address, email or phone number.



**Wheeling the "A"**

Wisconsin Chapter MAFCA  
Marilyn Brojanac, Distribution  
N61 W15975 Beechwood Dr.  
Menomonee Falls. WI 53051



**HAPPY 4TH OF JULY**

**New Membership Application**

Name \_\_\_\_\_ Date \_\_\_\_\_

Address \_\_\_\_\_

City \_\_\_\_\_ State \_\_\_\_\_ Zip \_\_\_\_\_

Phone(\_\_\_\_\_) \_\_\_\_\_ E-Mail \_\_\_\_\_

Child or Children's names \_\_\_\_\_

Model A's \_\_\_\_\_

Send my newsletter via email \_\_\_\_\_ or US MAIL \_\_\_\_\_

*Dues for 2012 for the Wisconsin Chapter, MAFCA:  
Receiving the newsletter & roster via the internet is \$20.00  
To receive the newsletter and the roster via the US Mail (first class) the  
dues are \$30.00 New member applications are approved at the  
monthly Board of Directors meeting, which is the second  
Saturday of the month. You will receive a welcome letter upon  
approval. Dues include membership only in the  
Wis. Chapter MAFCA until the end of the current calendar year.*

**Send To:**

Mike Clinnin  
Vice President/New Member Chairperson  
Wisconsin Chapter, MAFCA  
PO Box 26006  
Wauwatosa, WI 53226-0006

**\*\* JULY 2012 \*\***