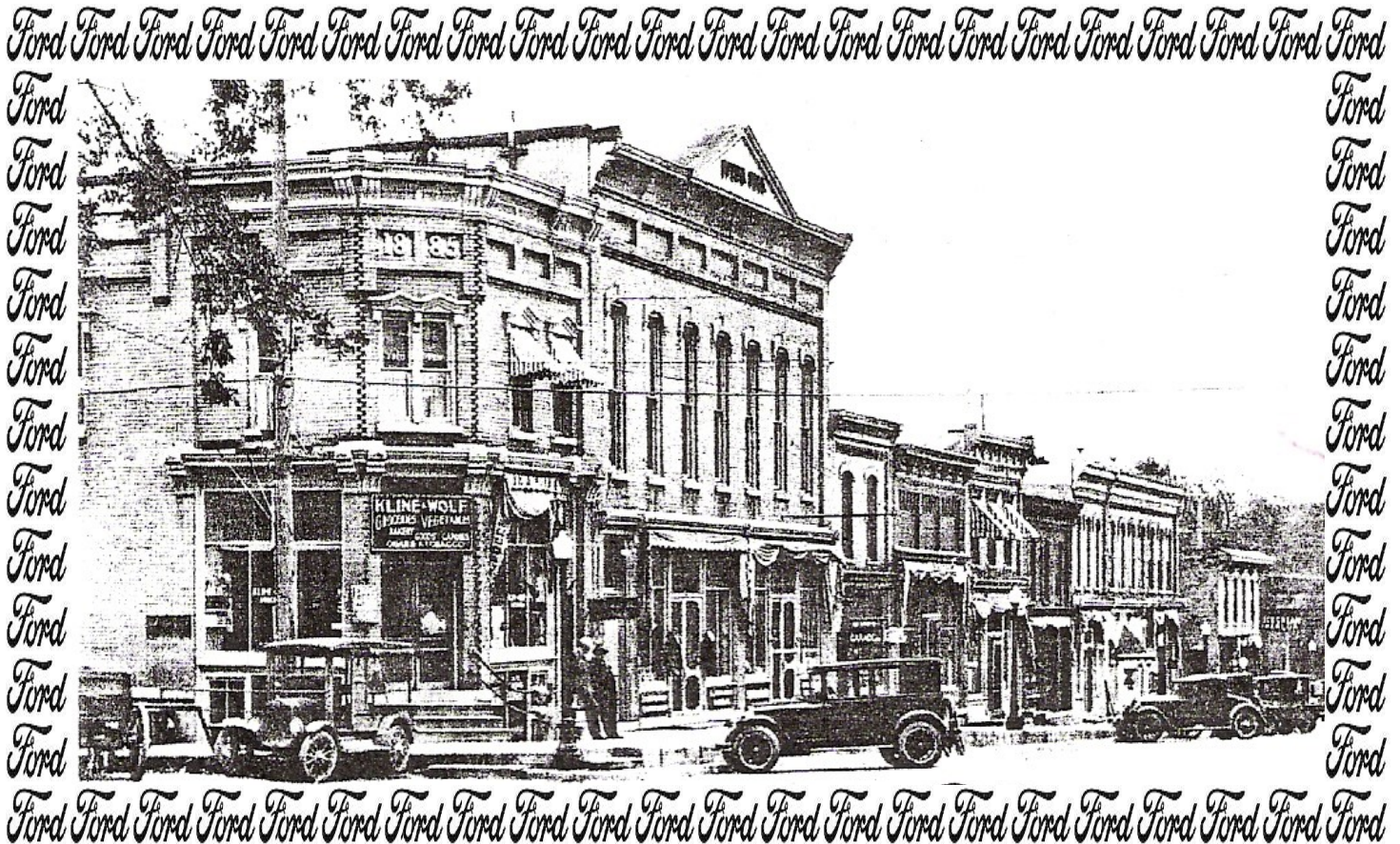


May 2008

# Wheeling the "A"

THE OFFICIAL NEWSLETTER OF THE  
WISCONSIN CHAPTER MODEL "A" FORD  
CLUB OF AMERICA



**Model A Day In Sharon, Wisconsin Sunday  
June 1st**

VOL XLIX ISSUE 5 CIRCULATION 307



## Board of Directors 2008:

**President:** Neil Besougloff  
262-560-1113 president@model-a-wis.com

**Vice President & member Ads:** Marty Jannsen  
262-246-7273 vicepres@model-a-wis.com

**Secretary:** Sue Quam -262-785-9021  
secretary@model-a-wis.com

**Treasurer:** Paul Piotrowski  
262-513-1089 treas@model-a-wis.com

**Outdoor:** Mike Quam 262-785-9021  
outdoor@model-a-wis.com

**Indoor:** Dan Kane 414-466-6750  
indoor@model-a-wis.com

**Technical:** Roger Olsen 262-554-7058  
techmeet@model-a-wis.com

**Club Accessory:** Bob Davisson  
414-543-2424 sales@model-a-wis.com

**Sunshine:** Dave Neuman 414-327-7170  
awards@model-a-wis.com

## Volunteers for 2008:

**Editor:** Sue Quam  
262-785-9021 Cell-414-491-3260  
editor@model-a-wis.com, msquam@wi.rr.com  
embroidersue@yahoo.com

**Webmaster:** Carl Doro  
414-259-9692 Webmaster@model-a-wis.com

**Club Property:** Rich Miller  
262-782-2240 richandliz@peoplepc.com

**Tool Keeper:** Bill Storey  
262-338-0452

**Paid Advertising:** Ed Schultz  
262-251-3043

**Distribution:** Marilyn Brojanac  
262-252-4340 marilyn@rodrian.com

**Distribution:** Lorraine Schultz  
262-251-3043

**Club Photographer:** Barb Sonnen  
414-771-1692 barb2sonnen@sbcglobal.net

**Video Librarian:** Dave Boucher  
Home-262-662-2273

**Club Historians:** Art & Sue Blazek  
262-538-4474 ablazek@wi.rr.com

## Advanced Timing Scheduled Events for 08-09

May 11th **May Tour– Antique Fire Trucks– Host Gene & Betsy Taurman**

May 24-26 **Memorial Day Overnighter– Hosts Mark Zimmer and Jarius Goking**

May 26th **Memorial Day Parade– Host Bob Sonnen**

June 1st **Sharon Model A Days– Hosts Bob & Sandi Davisson**

June 8th **Flag Day Parade– Hosts Stan & Pat Larson**

June 15th **June Tour– Hosts: Jim & Marlene Stegner and Dennis & Ann Wacker**

July 4th **4th of July Parades:**  
Greendale– Pat & Paul Piotrowski Franklin– Dave Huenink

July 13th **July Tour– HOST NEEDED**

July 25-27 **Wis. Rapids Reunion–**

Aug. 10th **Club Picnic– HOSTS NEEDED**  
(park permit has been secured)

Aug. 12th **Congregational Home for Seniors Car Show–Carl & Lu Doro**  
3:30-7:00 PM

August 23 **2nd Annual Model A Day Circus World Museum in Baraboo**

Aug. 24th **Racine Zoo Car Show– Hosts Mark Ackermann & Mike Ackermann** 10-4:00 PM

Sept. 13th **Mitchell Manor Car Show– Mark Ackermann & Carl & Lu Doro** 1-4 PM Rain date 9/20

Sept 20-21 **Richfield Threshere– Hosts Ed & Lorraine Schultz**

Sept 27-28 **Lake Geneva Cancer Run– Hosts: Wally & Sally Kaufman, Roger & Jan Olsen, Jack & Dori Burke**

Oct. 12th **Fall Tour– Hosts Marty & Jolene Jannsen**

Oct 26th **Ghost Gallop– HOSTS NEEDED**

Nov 8 **Milwaukee Veterans Day Parade– Host Neil Besougloff**

Nov **Indoor– Shoe Box Swap– Hosts Dennis & Marge Pierce**

Dec. **Christmas Party– HOSTS NEEDED**

Jan 09 **Custard Social– Hostess -Cheryl Prochnow**

Feb 09 **Chili & Salsa Cook off– Host Dan Kane**

March 09 **Old Movies & Slides– Hosts Wally & Sally Kaufman**

PLEASE remember if your planning an event, have all your information to the editor two months in advance. Deadline is the 15th of the month.



Wisconsin Chapter Technical Seminar **Bonus**

Roadside Diagnostics Presented by Al Downs & Tony Baudo

**Saturday, May 3, 2008 - 9:00 A.M. – 12:00 NOON**

Mail Truck Model A Parts Company  
8509 S. Howell Ave.  
Oak Creek, WI 53154  
(414)762-7288

Attendees will be divided in teams to solve possible roadside problems on vehicles at Mail Truck Model A Parts Company. We are planning to do this as an outside seminar

**MAY TOUR 5/11/2008**

Starting point: McDonalds Restaurant Parking Lot  
1383 Capitol Dr., Pewaukee  
Near Hwy 164 and Capitol Drive

Depart at: 12:00 PM- NOON

Destination: *The Venerable Fire Collection Museum* is a Keith Franz private collection of fire apparatus including equipment from the late 1800's to the middle of the 20<sup>th</sup> century. It is located in the hill country near Slinger, Wisconsin. The restorations are pristine and include vehicles as well as other equipment and alarm systems. It will be a nostalgic look into our past and enjoyable to see the restoration purist as well.

Route: Back roads through Kettle Moraine and Holy Hill area. After the tour there will be a stop for refreshments and socializing in a local park

Hosts: Betsy & Gene Taurman 262-242-0137

**HDR Inc. - Heavy Duty Radiator Repair**

N56 W13332 W. Silver Spring Road  
Menomonee Falls, WI 53051

**262-252-3920 FAX 262-252-3934**

**Bill Kowalefski**



*We Take Care of Leakers!*

*Specializing in Any and All Kinds  
of Radiator Repair*

MIKE BROJANAC (414) 464-7814

All Work Guaranteed

**THE BRAKE SHOP**

7665 W. APPLETON AVE

MILWAUKEE, WI 53222

Complete Auto Repairing





*Riding in your "Cherry A"  
across Door County*

**MEMORIAL DAY WEEKEND, 2008**

*Saturday May 24th, Sunday May 25th,  
Monday May 26th*



**\*\*\*\*\*MEETING PLACE TO START TOUR; Meet The Wackers at the  
McDonalds on Green Bay Rd, 1/4 mile North of Brown Deer Rd...  
WE WILL DEPART THIS LOCATION PROMPTLY AT 8:00 AM**

**UPDATED INFO:**

All I can say is..."WOW"! Your tour committee made a road trip to lay out our route for the Cherry Tour getaway, and it's going to be fantastic! Although final details need to be tweaked, we will rendezvous at Zimmer's Westview Funeral & Cremation Care Center parking lot (Sheboygan's northside) on **Saturday at about 10:00 a.m.**, after complimentary coffee, doughnuts, rest stops, gas and a peek at some cool cars, we will head off. Past the world famous Whistling Straights Golf Course, along beautiful back roads next to Lake Michigan.

First stop will be in Manitowoc at the Maritime Museum. There you can take a leisurely stroll along the boardwalk of a 19th century maritime community. Also there is a nice display of vintage boats, models and watercraft. See an authentic 1911 triple expansion marine steam engine, and tour the U.S.S. Cobia, a Gato-class WWII sub, moored at the museum and built right in Manitowoc. Cost is \$10/per person and will take about 2 hrs.

From there, we will travel north with gorgeous views of the lake, and beautiful countryside, next stop, Kewaunee, where we will enjoy a lakefront lunch and take some "browsing time at a fantastic Antique Mall. We should arrive at the Best Western in Sturgeon Bay around 4 p.m., with hospitality in the poolside area (yes there is a hot tub!). Dinner is on your own, and there are some great restaurants within walking distance of the Motel. *Continued on next page.....*

Home Sellers? \* I will provide free home warranty to aid in selling your home.

Home Buyer's? \* I will pay for your home inspection.

*\*Call for Details\**

**First Weber Group Realtors**

David Dohmeyer, Broker Associate  
Office (262) 251-7200 ext 1439  
Home Office (262) 251-0391

**MIKE'S REPAIR SERVICE**

Model A Ford and Early Mustang  
Parts and Service

**Mike Quam, Owner**  
**16130 Top-O-Hill Drive**  
**New Berlin, WI 53151**

Visa and Mastercard Accepted  
**(414) 491-3191 • (262) 785-9021**



*Door Cty Overnighter continued from previous page.....*

**Sunday** morning we will depart around 8:45 a.m. and tour the east side of the peninsula, including a drive through Whitefish Dunes State Park. The Egg Harbor Lions Club will host a picnic lunch for us at a park, after which you can choose to go to Simon Creek Winery for a tour and tasting, or a large dairy farm for a tour and dairy treats. In the afternoon, we will go over to the west side of the peninsula, and take a leisurely tour to Peninsula State Park, finishing the day with some shopping time in Egg Harbor. **The Sunday evening banquet will be held at "The Ladder House" located a few blocks from our motel. Cost is \$ 15.50/person.**

In the event, you wish to stay another day in Door County; Best Western has made Monday Evening available, check with them for availability.

### **Reservations**

Lodging for both nights at the Best Western Maritime Inn in Sturgeon Bay (40 rooms only!) The Best Western will provide extended Continental Breakfast each morning. Heated Pool and Whirlpool are included. Price will be \$ 75.56 per night

**Reservations (920) 743-7231, (confirmation # 178722)**

Tour maps, all other related material will be handed out at the start of the tour. If you have any questions or would like more information please call: Mark or Deb Zimmer (920) 565-4271 or [zimwiz@msn.com](mailto:zimwiz@msn.com) (after 5 p.m. please)



## **MEMORIAL DAY PARADE**

**MAY 26TH Meet at 1:00 PM**

Corner of North 4th Street and Michigan at Carl Zeidler Park  
Parade begins at 2:00PM

Join us in parade to remember our veterans who gave their lives while in service to their country, so that we can enjoy the freedoms and securities we have today.

Any questions contact hosts Bob & Barb Sonnen 414-771-1692



BOB KOLLER

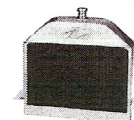
**Hour Glass & Trim Service Inc.**

ALL TYPES OF GLASS, VINYL TOPS, AUTO UPHOLSTERY

PHONE (262) 251-5250  
FAX (262) 251-7388

N86 W16200 ARTHUR AVENUE  
MENOMONEE FALLS, WI 53051

*We take "Special Care" when  
restoring or rebuilding your  
Antique or Classic radiator.*



**J & R Radiator**  
A/C & Exhaust

Chanhassen, MN      Hutchinson, MN  
**952-474-5258      320-587-4328**  
*Serving the collector since 1979*





## Model A Day In Sharon, Wisconsin Sunday June 1st 2008

Hey! Let's all take a ride in our A's to Sharon for the "Big One" of the year.

Join with us for a great time in a great little town ..... Sharon, Wisconsin, for the 12<sup>th</sup> annual Model A Day sponsored by The Sharon Main Street Association and The Rock-Ford Model A Club of Rockford, Illinois.

Turn back the clock with your Model A by joining over 300 other "A's" in a little rural community of 1250 friendly folks located about 65 miles southwest of Milwaukee that has changed very little since your "A" was built.

Chapter members coming from the NORTH half of the metro area will meet at McDonald's on Capitol Drive in Pewaukee just west of Hwy 164. You will be briefed and given a touring package including directions and a map.

Chapter members coming from the SOUTH half of the metro area will meet Bob and Sandi Davisson at McDonald's on Hwy 24 (Janesville Road/County L) at Racine Avenue (County Y) in Muskego. Bob will brief this group and provide you with a touring package including directions and a map.

NOTE! Officially, the day's activities are from 9:00 AM to 3:00 PM. Because of the approximately 1 ½+ hours of travel time to Sharon and the fact that main street parking becomes almost non-existent by 9:00 AM, **we will depart both locations promptly at 7:15 AM.** Please understand that activities start to "wind down" about mid afternoon, therefore, you can head home early either singly or in a group(s).

So, get there early ..... do your breakfast/coffee bit ..... visit the "facility" and we'll be happily on our way. Some of the "out West" folks may wish to join us "along the trail". You can get the route details from Bob ahead of time.

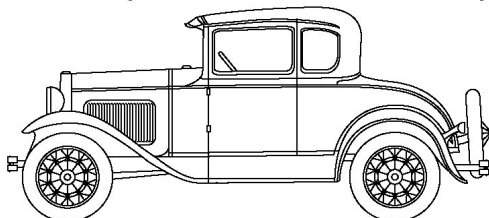
Any questions? Please call Bob Davisson at 414-543-2424.

### Templin's Old Time Auto, LLC

Model A Ford Parts New, Used, & Rebuild  
2737 Highway N • Cottage Grove, WI

Monday - Friday  
10:00 am - 6:00 pm

Saturday  
10:00 am - 2:00 pm



(608) 873-6075 • Jeff Templin, Owner



### Badger Plating Co.

Specializing in:



### Custom Plating



Show Chrome • Gold & Brass  
Auto, Truck Parts • Motorcycle Parts  
Aluminum, Diecast • Antiques • Marines  
Powder Coating Frames • All Colors • Clear Anodizing  
Also Fix Bumpers • 5 Day Service Per Request

Hours: M-F 8 am - 5:30 pm

Sat 9 am - 1 pm

Stan or Tracy  
Ext 13

4021 S. Kinnickinnic Ave.  
St. Francis, WI 53235

(414) 482-4820  
Fax (414) 482-4822





## FLAG DAY PARADE 2008 SUNDAY JUNE 8<sup>TH</sup> 2008

Proud American's and Veterans lets FLY the Red, White and Blue, OLD GLORY on this special day to remember FLAG DAY. The Village of WAUBEKA, in OZAUKEE COUNTY is the home of FLAG DAY.

President Woodrow Wilson issued a proclamation on June 14<sup>th</sup> 1916 as a Nation wide observance of FLAG DAY.

We want to invite you to display your Model A with Flags in a parade in this quaint little village. There will many VFW & Legion Bands as well as floats. There is also a very nice museum of flags and American history.

Departure: OLD FALLS VILLAGE PARK.

Time: 10:30 AM

North of I-45 on Pilgrim Road

Lunch: 11:00 AM.

WAYNES WORLD DRIVE INN.

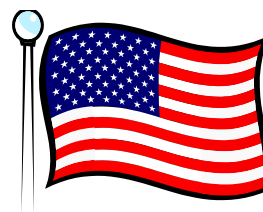
Five Corners & Hwy 60 in Cedarburg

Car Hops wear skates or dine in side!!!

It will be an informative day of fun. Please join us.

Stan & Pat Larson

262-251-1655



### *John's Antique Auto Parts*

10841 Bruns Road

Monee, IL 60449

Phone (815) 469-4799 • Fax (815) 469-4417

Toll Free (888) 865-3452

### **Model A Short Blocks - \$1375**

Hot Tanked, Cylinders Bored & Honed, Decked,  
Reground Crank, Reground Cam (B Grind)

**All Blocks Get New:** Babbit, Pistons, Rings,  
Stainless Steel Valves, Guides, Lifters,  
Hardened Valve Seats, Springs,  
Fibre and Steel Timing Gears

**Other Options Available:** Long Block,  
Center Main Oiler, Oil Pump Rebuild,  
Head Resurfaced, Manifold Resurfaced

**Available immediately on exchange basis**  
- or -

**Have yours rebuilt (short turn around time)**

Free Engine Delivery Within 125 Miles  
Other Model A Parts Available

5% off all Model A Parts for 1 year with purchase of engine  
(Excludes Engine Parts)

*Now that you've seen the rest ask why ours is best!*

Wisconsin Chapter Member  
Al Downs

## Mail Truck Model A



**Providing all of your Model A needs**

**8509 S. Howell Ave**

**Oak Creek, Wi 53154**

**414-762-7288**

**We now offer shipping and Model A Service**





# The Model A Poker Run

(with a twist) will be held on



June 15th.

We will meet in the parking lot at  
**Rodrian Insurance, 4120 N. Calhoun Rd. at 12:30 PM.**  
 Come out for an afternoon of driving your A while picking up  
 your poker hand. We will end up at Pistol Pete's on  
 Lisbon Rd. to award the winning hands.

*Livin' the "A" Life...*

**Marty Jannsen, CPA**



Collector of **P**ractically **A**nthing



**Wealth Management • Tax • Accounting**  
**HR • Information Technology • Payroll**

262.513.9292 • 262.513.9282 fax  
 Marty.Jannsen@jannsen.com  
 www.jannsen.com

OPEN  
 Monday-  
 Saturday  
 10:30 am  
 to  
 7:00 pm



Closed  
 Sunday's

3146 S. 27th St (414) 671-2118

**Milwaukee's  
 Dry Stripping  
 Headquarters**

**Specializing in:**

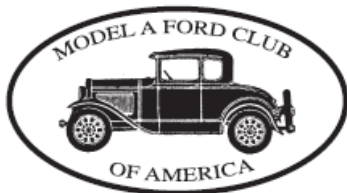
- Industrial Blasting and Painting
- Automotive Paint Stripping
- Metal Furniture Stripping and Refinishing
- Do It Yourself Sandblasting Cabinets

**262.781.8884**

4907 North 124th Street  
 Butler, WI 53007

**U-SPRAY  
 INCORPORATED**





*46th Annual  
Model A Reunion  
July 25th-26th-27th, 2008  
YOU AND YOUR FAMILY ARE INVITED...*



**This Model "A" Reunion** is the greatest gathering of old Fords and old Ford enthusiasts in Wisconsin. The Reunion, originated in 1962, is sponsored by 4 clubs: Central Wisconsin Chapter MAFCA, Wisconsin Region MARC, Nickel A Region MARC/MAFCA, and the Wisconsin Chapter MAFCA.

The meet consists of a weekend of enjoying Model "A's" and Model "A" fellowship, and includes a tour, people's choice, era fashion judging, kids' games, Hubley Derby, car games, chapter team events, women's rolling pin toss, a dance, fund-raising auction, as well as lots of surprises and fun.

**The reunion is held** the last full weekend in July, unless it conflicts with a National MARC or MAFCA meet. The Central Wisconsin Chapter MAFCA hosts the reunion on their privately held 10-acre site, which includes a club house, plenty of wooded campsites, and is close to many nice motels and restaurants. These grounds were developed and maintained for Model "A" activities.

**Location:** The club grounds are located 4 miles east of Wisconsin Rapids, just south of state Highway 54 (or approximately 11 miles west of Plover. Turn south on 72nd Street (a gravel dead end road).

#### **Weekend Activities**

Refreshments are available throughout the weekend for registered participants.

**Good Food:** A potluck lunch is planned for Saturday and Sunday. Guests and members are asked to bring 2 dishes to pass (one for each day). Friday and Saturday evening, you may want to roast hotdogs at your campsite or go out for a relaxed dinner at one of the nearby restaurants with a group of your new friends.

**Friday** afternoon the registration table opens. An Auction will be held in the evening of Model A related items, as well as other donations for kids, ladies, and men.

**Saturday** morning starts with an era fashion show, then a noon potluck, followed by a driving tour. After that is the Hubley Derby and kid's games. A dance will be held at the club house for the evening's entertainment.

**Sunday** is a day of car games, potluck lunch, Chapter team events, and a ladies rolling pin toss, followed by the awards presentation.

#### **Where to Stay**

Primitive campsites are available at the reunion site, and will be open to early birds on Wednesday, July 23rd, and you can camp through Monday, July 28th. The fee per campsite is \$10/night, or \$15 for the entire weekend. For those who prefer a few more comforts of home, the following motels are located only a few miles from the reunion. Register early, as the motels fill fast.

Cozy Inn Motel.....	(715) 423-1220
Mead Inn.....	(715) 423-1500
Best Western .....	(715) 423-3211
Quality Inn.....	(715) 423-5506
AmericInn.....	(715) 423-3444
Econo Lodge.....	(715) 423-7000
Best Value Inn (Super 8).....	(715) 423-8080
Maples Motel .....	(715) 423-2590
Sleep Inn & Suites .....	(715) 424-6800

**Pre-Registration:** A \$10 non-refundable advance registration fee (through July 1st) is encouraged to help us plan the weekend, and it saves you \$5. Pre-register with Jan Olsen; 4706 Forest Lane; Racine WI 53403.

**Registration Table** will be open Friday afternoon and Saturday morning.

#### **Registration Fees**

##### **1. Club Member<sup>1</sup>, family, and one Model A**

Pre-Registered (\$10 + \$20).....	\$30
Non-Pre-registered, the total fee is .....	\$35
Each Additional Model A.....	\$ 5

##### **2. Non-Club Member, Family, and one Model A**

Pre-registered (\$10 + \$25) .....	\$35
Non-Pre-registered, the total fee is .....	\$40
Each Additional Model A.....	\$ 5
Wooden Award Plaque.....	\$10

##### **3. Guest<sup>2</sup> Fees**

Each Guest, 21 or older .....	\$15
Each Guest, ages 6 to 20.....	\$10
Each Guest, ages 5 and under .....	FREE

##### **4. Campsite Fee<sup>3</sup> (per campsite).....\$10/night or \$15/weekend**

<sup>1</sup>A **Club Member** is a member of the Wisconsin Chapter MAFCA, Central Wisconsin Chapter MAFCA, Wisconsin Region MARC, or Nickel A Region MARC/MAFCA.

<sup>2</sup>A **Guest** is anyone who is not an immediate member of your family, which includes married children. Your immediate family is your spouse and unmarried children who live with you. Parents, baby sitters, brothers, sisters, grandchildren, friends are all guests - and will be charged accordingly.

<sup>3</sup>**Campsites** are reserved for registered participants. Guests using additional sites will be charged per campsite.

**Fees include** a wood reunion plaque (unless previously received) for each Club Member registered car, lunch on Saturday and Sunday, and eligibility for all car games. A participation ribbon will be given to each registered family member and guest, and must be worn at all times to take part in the weekend's activities..

#### **For more information:**

**E-mail:** [wirapidsmodela@netwurx.net](mailto:wirapidsmodela@netwurx.net)

**Web Site:** <http://clubs.hemmings.com/wirapidsmodela/>  
**Tony Sillman:** (920) 478-4541 / (262) 255-4525



Register Early **SAVE** \$5.00

## Registration Form

Register Early **SAVE** \$5.00

# 2008 Wisconsin Rapids Model A Reunion

July 25<sup>TH</sup>, 26<sup>TH</sup>, 27<sup>TH</sup>

Name: \_\_\_\_\_

Address: \_\_\_\_\_

City: \_\_\_\_\_ State: \_\_\_\_\_ Zip: \_\_\_\_\_

Phone: (     ) \_\_\_\_\_ - \_\_\_\_\_ E-Mail: \_\_\_\_\_

Please Indicate the number of people attending:

Family Members:      Guests:

\_\_\_\_\_ Adults      \_\_\_\_\_ Adults

\_\_\_\_\_ Children      \_\_\_\_\_ Children

Are you camping?      \_\_\_\_\_ Yes    \_\_\_\_\_ No

If yes, how many nights?      \_\_\_\_\_ One    \_\_\_\_\_ Two

Do you currently have a plaque?      \_\_\_\_\_ Yes    \_\_\_\_\_ No

Which Model A Club do you belong to:

\_\_\_\_\_ Central Wisconsin MAFCA

\_\_\_\_\_ Nickle A MARC/MAFCA

\_\_\_\_\_ Wisconsin Chapter MAFCA

\_\_\_\_\_ Wisconsin Region MARC

\_\_\_\_\_ No club or other (If other, please write club's name below)

\_\_\_\_\_

Car Information:

Year: \_\_\_\_\_ Model: \_\_\_\_\_

Year: \_\_\_\_\_ Model: \_\_\_\_\_

Fashion Judging:

Will you be entering Fashion Judging? \_\_\_\_\_ Yes    \_\_\_\_\_ No

Participation Ribbons will be issued for this event and must be worn at ALL times  
to enjoy the free drinks and meals over the weekend.

### **PRE-REGISTER FOR ONLY \$10, AND SAVE \$5 ON THE WEEKEND!!**

#### **REGISTRATION FEES**

- 1) **Club member:** family and one Model A (pre-registered \$10 + \$20) ..... \$30.00  
For participants not pre-registered ..... \$35.00  
Each additional Model A ..... \$ 5.00
- 2) **Non-club member:** family and one Model A (pre-registered \$10 + \$25) ..... \$35.00  
For participants not pre-registered ..... \$40.00  
Each additional Model A ..... \$ 5.00
- 3) **Guest Fees** *Guest is anyone who is not an immediate member of your family, which includes married children. Your immediate family is your spouse and unmarried children who live with you.*  
Each Adult, 21 and older ..... \$15.00  
Each Child, ages 6 to 20 ..... \$10.00  
Each Child, 5 and under is free, but must be registered
- 4) **Camping Fees** per site: \$10/night or \$15/weekend maximum  
\*\*Guests using additional sites will be charged per campsite

Make \$10.00 check payable to Janet Olsen  
Send pre-registration fee and registration form by July 1st to:

**Janet Olsen**  
**4706 Forest Lane**  
**Racine, WI 53403**

Questions?? Check out the website at <http://clubs.hemmings.com/wirapidsmodela/>  
or email to [wirapidsmodela@netwurx.net](mailto:wirapidsmodela@netwurx.net)



## Prez Notes for May .....from Prez Neil



Despite blustery 37-degree weather (when will it ever end?) our spring startup tour drew several Model A's and a slew of modern cars, a strong kickoff to our 2008 outdoor season. Be sure to thank Bob and Sandi Davisson for hosting a fun event and for making sure there was "plenty" of coffee to keep us warm.

Coming up on the club calendar are an outdoor technical meet on Saturday, May 3 (Roger Olsen promises prizes to the team that fixes a sabotaged car first), a Mother's Day tour to an antique fire equipment museum on Sunday, May 11, the Memorial Day weekend overnighter to Door County on May 24, 25 and 26, and the Milwaukee Memorial Day parade on May 26.

Then comes the June 1 road trip down to Sharon, Wisc., for Model A Day, participation in a Flag Day parade on June 8, and the June tour on the 15th.

Phew! That's seven events in seven weeks!

Be sure to RSVP to the hosts of any of these tours or parades you plan to attend. Many tours, like the spring startup tour, include visits to businesses and restaurants that require advanced planning.

Even simple events, like a stop for snacks at a village recreation hall, involves advanced planning. How many paper cups? How many bags of snacks? How many chairs? The last thing the tour host wants to do is tell a fellow club member, "Sorry, we didn't expect you so we weren't prepared."

The same goes for parades. Our club receives a fee for some of the parades we participate in, and therefore we commit to having six, eight, a dozen or more cars in those parades. Other parades, like the Franklin July Fourth parade and those in downtown Milwaukee, do not have large staging areas, so parade organizers need to know in advance whether we will have four cars in the parade or fourteen.

So don't forget to RSVP to the hosts of outdoor events you plan to attend.

Looking farther down the road, all the summer and fall events have hosts except for two – the annual picnic on Aug. 10 and the Ghost Gallop on Oct. 26. If you're interested in hosting or co-hosting either of the events, please contact outdoor chairman Mike Quam at 262-785-9021 or email Mike at [outdoor@model-a-wis.com](mailto:outdoor@model-a-wis.com). – Neil Besougloff

**DID YOU KNOW:** Bananas are the world's most popular fruit after tomatoes. In western countries, they could account for 3% of a grocer's total sales.

Bananas consistently are the number one complaint of grocery shoppers. Most people complain when bananas are overripe or even freckled. The fact is that spotted bananas are sweeter, with a sugar content of more than 20%, compared with 3% in a green banana.





# **BOARD OF DIRECTORS MEETING MINUTES**



*MEETING DATE:* April 12, 2008

*MEETING PLACE:* Sue Quam

*MEETING CALLED TO ORDER BY:* President Neil Besougloff

*BOARD MEMBERS PRESENT:* Neil Besougloff, Marty Jannsen, Sue Quam, Paul Piotrowski, Mike Quam, Dan Kane, Roger Olsen, and Bob Davisson

*BOARD MEMBERS ABSENT:* Dave Neuman

*SECRETARY REPORT BY SUE QUAM:* The minutes of the March 8<sup>th</sup> meeting were approved as written on a motion by Roger Olsen and seconded by Paul Piotrowski. Current membership is 291

*TREASURER REPORT GIVEN BY PAUL PIOTROWSKI:* Financial report for March was given, motion to accept report made by Bob Davisson and seconded by Roger Olsen. Report on swap meet finances was given. Idea was tossed around that maybe next year the door fee should be raised. All bills were turned in, motion by Dan Kane to pay the bills, motion seconded by Mike Quam. No income at this time.

*VICE PRESIDENT REPORT GIVEN BY MARTY JANNSEN:* No report this month, no new members.

*OUTDOOR MEETS REPORT GIVEN BY MIKE QUAM:* Still no hosts for the picnic or the ghost gallop, waiting for a final 'yes' on a July tour idea from one member. Elm Brook Historical Society has asked for a group of cars (4 to 15 cars) to come to their Dousman Stagecoach Inn buildings on Pilgrim Parkway. Date and time has not yet been set, further details need to be ironed out.

*INDOOR MEETS GIVEN BY DAN KANE:* Need hosts for the Christmas party. All months are pretty well covered with hosts and events.

*TECHINICAL MEETS REPORT GIVEN BY ROGER OLSEN:* The technical seminar on May 3<sup>rd</sup>, will have some prizes for the winning teams. The last technical seminar in March ran into a few issues with the top on the Cabriolet. For next year Roger would like to do a field trip, idea's presented at the last BOD meeting were checked into and they are a no go.

*CLUB ACCESSORIES/NATIONAL CORRESPONDENT GIVEN BY BOB DAVISSON:* Nothing new to report. Bob did some checking into the lan-yards for the ID badges. There is a wide range of prices and styles out there, prices and styles were discussed and the issue was tabled for now.

*AWARDS & SUNSHINE- DAVE NUEMAN:* No report

*OLD BUSINESS:* Nothing more on the banquet idea's at this time.

*NEW BUSINESS:* A letter from MAFCA was received, one of the issues in that letter is: The MAFCA Board of Directors has proposed a By-Law change, which would be voted on by the membership this year. The proposal will restore the requirement that all members of MAFCA Chapters be MAFCA members. Discussion on what this could mean to the WI Chapter if this happens. Currently about 38% of our members are NOT MAFCA members. Idea's on what should be considered IF this By-Law Change does pass was discussed. Will wait to see what happens after MAFCA voting is over with.

Dan Kane got response from our private insurance carrier pertaining to beer at the annual picnic. It appears that a change made to the policy for this event will be a very small fee. Dan is going to check with insurance man to see if this is a yearly fee or a one time event fee, the email was not 100% clear. A motion was made by Roger Olsen, to change the insurance policy to include beer at the picnic. This motion was seconded by Marty Jannsen, and the motion carried.

*CORRESPONDENCE:* Various reciprocals

*MOTION TO ADJOURN BY:* Marty Jannsen and seconded by Mike Quam

*NEXT MEETING:* May 10<sup>th</sup> 7 PM at Bob Davisson's house 3376 S. 79<sup>th</sup> Street, Milwaukee

Submitted by Sue Quam  
Wisc Chapter Secretary



# Reminiscing With the Historian



FIFTY YEARS AGO, 1958 - About 50% of members and families now have some clothing of the era of their cars. It is hoped by all officers of the club that all major club activities in the future will include costumes as well as restored cars.

FORTY-FIVE YEARS AGO, 1963 - Articles are too faded to read.

FORTY YEARS AGO, 1968 - The first spring outing to Aero Airport was quite a success as far as attendance was concerned. There were 50 members present. Everyone enjoyed the skydivers and gliders.

THIRTY-FIVE YEARS AGO - 1973 - The Avenue Brake Shop hosted a rap session on answering questions and solving problems members may have involving maintenance and running of a Model A.

THIRTY YEARS AGO, 1978 - Victor Supply presented our group with a movie, showing step-by-step procedure for using oxy-acetylene welding torches. The remaining part of the evening was spent trying to get Dan Kane's Tudor to run on all four cylinders. No, we didn't get it running on all four, so Dan drove it home on three. If that isn't bad enough, he was stopped by Brookfield Police for having only 1 taillight.

TWENTY-FIVE YEARS AGO, 1983 - The "A" tip for May was on the abuses a battery takes and the periodic maintenance it requires.

TWENTY YEARS AGO, 1988 - The May Poker Run was a big event for the month. Over fifty cars joined in, and half were A's. The ride went through Milwaukee County and stops were made at the Timber Wolf Preservation Society. Douyett's Bootlegger Tavern and South Shore Park.

FIFTEEN YEARS AGO, 1993 - Menomonee Falls was the starting point for the Recycler Tour. Members traded recyclable items for route sheets. The tour went through Waukesha County while members learned about legal and illegal dump sites, Adopt-a-Highway and the value of recycling.

TEN YEARS AGO, 1998 - The Adopt-a-Highway committee chaired by Ron Smith spent a considerable amount of time, effort, and fuel in reviewing possible locations for the Wisconsin Chapter to participate in the program. None of the sites meet our criteria, so the program was put on hold.

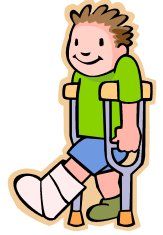
FIVE YEARS AGO, 2003 - The May Tour went through the back roads of Southeast Wisconsin to the Kohler Design Center. The tour was hosted by Marilyn Brojanac, Carol Mazurkiewicz, Carol Wartner, and Ann Wacker.

## Submitted by Art and Sue Blazek





# Sunshine Report



A note from Lafe Nelson Sr:

In early December I fell on some ice. It fractured my pelvis, shattered my hip, and broke my right arm. The pelvis is healing. The hip has been replaced by a titanium hip. The right arm has healed. I spent 92 days in rehab healing and learning to walk again. I now have a new restoration project. It will be a few months until I can get back to working on it. It is a 1951 Ford F1 pickup. Lafe, we all hope your back on your feet and doing well!!

A note from Willie Nelson:

A "Thank you" to Dave Neuman for the get well card, sent on behalf of the club. Willie had some serious eye surgery April 15th to rebuild the front and back of the eye, if successful he won't be driving for 6 weeks. Willie ask that we all keep him in our prayers, as he needs all he can get. Hope your mending fine Willie!

The father of Gary Schwabe passed away on March 24, Our deepest sympathies to the Schwabe family.

Zelda Smith, Wis MARC member passed away April 11th. Zelda was usually at the end of the food line at the Wisconsin Rapids Reunion, collecting the money from non-registered participants. Our deepest sympathies to Zelda's family.

**Please remember to notify Dave Neuman with any Sunshine type news.  
Phone 414-327-7170 or email Dave at : [awards@model-a-wis.com](mailto:awards@model-a-wis.com)**

## UPCOMING SWAP MEETS OR CAR SHOWS:

1. Wis. Region Swap Meet May 4th , see page 7
2. Wis. Early Mustangs car show May 18th– see page 8
3. Spring Jefferson- April 26 & 27 for more info see [www.madisonclassics.com](http://www.madisonclassics.com)
4. May 4th Drag & Boogie Sundays– Great Lakes Dragway Car Motorcycle, Truck Swap Meet 8-3PM
5. Rods-n-Relics Car Show July 5th Lime Kiln Park, Grafton [www.rodsnrelics.org](http://www.rodsnrelics.org)
6. Iola Car show & Swap meet July 10, 11, 12 & 13
7. Elkhorn Swap meet & Show August 2 & 3. [www.madisonclassics.com](http://www.madisonclassics.com)
8. Waukesha Olde Car Club Show & Picnic August 10 Frame Park, Waukesha
9. The Masterpiece On Milwaukee's lake front Veterans Park August 23 & 24. Admission fee <http://www.milwaukee-masterpiece.com/tickets.htm>
10. Milwaukee Harley Davidson 105th Rally-various dealerships in Milwaukee 800-544-1448
11. Fall Jefferson Swap Meet & Show September 27 & 28 [www.madisonclassics.com](http://www.madisonclassics.com)





# ***The Rearview Mirror***

## ***Installing A New Top on A 1930 Cabriolet - March Technical Seminar***

The good news is we got our parts back from being chromed so we could stay on schedule to begin installation of the new top on a 1930 Cabriolet for our March seminar. The bad news is . . . well . . . let's just say our March seminar was an intense session on attempting to interpret and comprehend LeBaron Bonney printed directions to install a Cabriolet top.

We divided our group in two crews that worked very hard covering the bows for the top. That was a much more difficult job than originally planned and our crews did exceptional work getting the job done. That was about all we got done that night.

Unfortunately, we did not arrive at our desired appearance of the top when we followed LeBaron Bonney directions. We appreciate Nick Mazos granting us the privilege to examine his Cabriolet so we could better understand how the top on a Cabriolet should look.

Many, many, many phone calls have been placed between Oak Creek, WI and Amesbury, MA in the weeks since our March seminar. We needed LeBaron Bonney to interpret what their printed directions were not explaining so we knew what procedure to do next. To complete the top, some parts were measured and sent back to them to be sewed. It seems each Cabriolet top is different from the next one even though they are the same.

Thank you to Al and Tony for all their patience in helping me put the last touches on this part of our Technical Seminar at Mail Truck Model A Parts Company.

As Technical Chairperson I completed Model A Safety Inspections on 6 vehicles on our first outdoor tour of this season to Berres Coffee. That's because we had six Model A's that braved the mid-thirty degree temperature that day. The rest of us were in modern iron . . . or should I say plastic?

**Remember . . . Mail Truck Model A Parts Company  
Saturday, May 3<sup>rd</sup> 9:00 A.M. - NOON  
Al and Tony are scheduling a fun morning  
At their Roadside Diagnostics Seminar  
We are predicting sunshine and warm weather!!!**





# ***The Rearview Mirror***

## ***HOW DID THE 2008 SPRING TOUR GO?***

Forty five club members, guests and a little dog met at McDonald's in Pewaukee on Sunday 13 April to start the touring season by taking "the scenic route" to Watertown.

However, it was not exactly a Spring day ..... cloudy and 37\* F, with a brisk wind out of the north. That contributed to limiting the number of "A's" attending to six. With most "A's" not having a manifold heater, the rest of the folks opted to drive their modern cars.

Our first stop in Watertown was Berres Brothers Coffee Roasters Factory and Store. Berres Brothers is Wisconsin's answer to Starbucks in the world of "specialty coffees". We were greeted by Corey Schneidewent, "The Coffee Ambassador". He briefed us on some of the aspects of the company, then took half of the group into the production area where he explained the coffee making process.



Berres starts with the basic "green" beans, roasts them, adds flavors and packages the end product. Many folks had questions about coffee processing. This made for quite an interesting session. The other half of us waited in the coffee café area, enjoying some of Berres' freshly brewed product, while others strolled through the "store" and selected some coffee to take home. With 50+ flavors to choose from, it was almost too much.

After the second group took their tour with "Mr. Ambassador", there was a drawing for a gift bag of various Berres Brothers coffees. The lucky winner was Pat Piotrowski.

Then, it was off to Settler's Bay restaurant on the Rock River for some good food and liquid refreshment. Following the meal, everyone headed home after what turned out to be a nice day.

Bob and Sandi Davisson





## Classified Ads.....

**FREE:** Five 21 inch wheels for Model A. All good condition. Need sandblasting. Two 1931 left front fenders, One with minor dings, one perfect wheel well and a lot of dents and tears. Come pick them up. Call first. Dave Lang 262-968-2432 608 Bron Derw Dr. Wales, WI

**FOR SALE:** 1931 Ford Model A Coupe. Fully restored in the 1980's motivated seller and willing to negotiate a more than fair price. Ronald Thorson 920-342-9242

**FOR SALE:** 1928 Model A Phaeton. Older restoration, well maintained. Rose Beige and Seal Brown. \$15,000 - OBO. Contact Jack Ford (608) 935-3540.

**WANTED:** Front cushion for a 29 Briggs 4 door. Just the part which we sit on. Does not have to be perfect. Call or E Millard Christianson (920) 743-1310 millard424@sbcglobal.net (It could be the whole front seat for the above.)

**FOR SALE:** Beverly Hills car cover made to fit a Model A Tudor, Will fit on almost any Model A—\$30.00 Also a TIP Pressure Sandblaster, holds up to a 100 lbs. of sand. Extra nozzles and a hood for operation \$100.00 or best offer. Gene Jenista 262-632-9756

### **Calling All Cars:**

Mike and Sue Quam are looking for Model A's and their drivers for their son's wedding. The Wedding Party would like to be driven from the church (Brookfield) to the park (Waukesha) for photos and then to the hall (Oklahoma & Hwy 100). The Wedding is Friday, June 20th. Please call the Quam's if you can help out. 262-785-9021 We could use a couple more Tudor's or Fordors. Thanks!!



If you have an email address and are not receiving emails regarding events, cancelled events or member illness's or deaths, please email Sue Quam so you can be added to the email list. msquam@wi.rr.com

### **Classified Ads—**

This Chapter attempts to include all classified ads received. The ads will be limited to six lines and they shall be auto related unless space permits. Ads will be included on a first come first serve basis.  
Send ad to Marty Jannsen  
262-246-7273  
Or email vicepres@model-a-wis.com

**For Future Paid Ads, Please contact:**  
**EdSchultz**  
**N83W15288 Manhattan Drive**  
**Menomonee Falls, WI 53051**  
**Phone: 262-251-3043**  
**Publications Committee Chair**



# WISCONSIN CHAPTER - MODEL A FORD CLUB OF AMERICA

## EMBROIDERED MAFCA LOGO ACCESSORIES ORDER FORM

To order, call Times Custom Apparel, 1-920-994-4396, M-F, 9:00 A.M. - 3:00 P.M.  
 Ask the Times Printing Company switchboard operator for Times Custom Apparel.  
 Inform the Order Desk that you are a member of the Wisconsin Chapter - MAFCA.  
 Provide your name, address and telephone number. Times Custom Apparel will call you when your order is ready. At that time, mail your payment to: (Sorry, no credit card sales.)

Times Custom Apparel  
 Box 325  
 100 Industrial Drive  
 Random Lake, WI 53075

ITEM	COLOR	SIZE	QTY.	ITEM PRICE	TOTAL PRICE
T-Shirt - Mens	Lt Yellow			17.90	
T-Shirt - Ladies	Lt Yellow			17.90	
Tank Top - Ladies	Lt Yellow			17.50	
Golf/Polo Shirt - Unisex - No Pocket	Black			27.00	
Golf/Polo Shirt - Unisex - With Pocket	Black			28.00	
Golf/Polo Shirt - Unisex - No Pocket	Lt Yellow			27.00	
Golf/Polo Shirt - Ladies Sleeveless	Lt Yellow			29.30	
Shirt - Denim - Unisex - Long Sleeve	Blue			36.90	
Sweatshirt - Adult	Black			27.45	
Sweatshirt - Adult	Lt Yellow			27.45	
Jacket - Winter - Satin	Black			79.00	
Jacket - Winter - Satin - Sizes 2XL-3XL	Black			81.00	
Sizes available: S - M - L - XL - 2XL. All items embroidered with Model A logo. Embroidered first name, each item, \$3.00. Embroidered full name, each item, \$5.00. Price includes Wis. State Sales Tax. UPS shipping is extra.					(2-1-08)



# Fun Fashions for Fellas

By Pegge Blinco

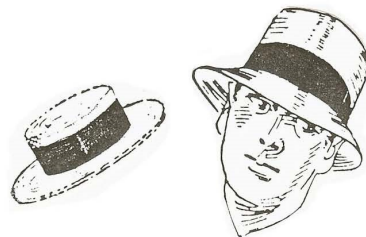
With the hope of urging our gentlemen into fashions of our era, I offer suggestions for doable clothing – off the rack – simple, easy and uncomplicated.

One of the best items a fella should have in his closet should be a light, putty-colored Docker pant or light colored washable linen slack. Add a white or pin-striped long sleeve shirt, a four-in-hand tie or bow tie – or no tie, suspenders or belt. For footwear, saddle shoes, two-toned wing tips or cap toes, light colored canvas shoes with rubber soles or buckskins ... but NEVER athletic shoes!! A driving cap or straw boater completes the outfit.



When the weather got warm, sleeves were rolled to and above the elbows, as short sleeves did not exist on men's shirts until late 1931.

To kick this up a notch, use the same light slacks and shirt, unroll the sleeves, add a blazer, preferably dark colored, single or double breasted, a bow tie, or four-in-hand tie – length was short – 45", same shoes, straw boater or Panama hat, and he's suitably dressed for lunch or afternoon party.





**New Membership Application**

**Name** \_\_\_\_\_ **Spouse** \_\_\_\_\_ **Date** \_\_\_\_\_

**Address** \_\_\_\_\_

**City** \_\_\_\_\_ **State** \_\_\_\_\_ **Zip** \_\_\_\_\_

**Phone**(\_\_\_\_) \_\_\_\_\_ **E-Mail** \_\_\_\_\_

**Child or Children's names** \_\_\_\_\_

**Model A's** \_\_\_\_\_

*I understand that my \$25.00 dues include membership only in the Wisconsin Chapter, MAFCA, Inc. until the end of the Current calendar year. The Wisconsin Chapter MAFCA, Inc. recommends that you consider joining the National Model A Ford Club of America with the additional dues of \$40.00 payable to them.*

*Subject to change by National MAFCA and /or Wisconsin Chapter.*

**Send To:**

Marty Jannsen  
Vice President/New Member  
Chairperson  
Wisconsin Chapter, MAFCA  
PO Box 26006  
Wauwatosa, WI 53226-0006  
Phone 262-246-7273

**\*\*\*May 2008\*\***

***Wheeling the "A"***

Wisconsin Chapter MAFCA  
Marilyn Brojanac, Distribution  
N61 W15975 Beechwood Dr.  
Menomonee Falls. WI 53051

**Address Service Requested**

Presorted Standard  
U.S. Postage Paid  
Permit No. 2684  
Milwaukee, WI

Get a new car for your spouse; it'll be a great trade

